



FOREST HILLS
— PUBLIC SCHOOLS —

Forest Hills Public Schools
Grand Rapids, Michigan

Annual Comprehensive Financial Report
Year Ended June 30, 2024

**Forest Hills Public Schools
Grand Rapids, Michigan**

Annual Comprehensive Financial Report
Year Ended June 30, 2024

Prepared by:

Forest Hills Public Schools

Business Office

Julie Davis, Assistant Superintendent for Finance and Operations

Forest Hills Public Schools

Table of Contents

Introductory Section

Table of Contents	ii - iv
Letter of Transmittal	v - vii
Elected Officials and Administrative Staff	viii
Organizational Structure	ix
Certificate of Excellence in Financial Reporting	x

Financial Section

Independent Auditor's Report	1 - 3
Management's Discussion and Analysis	4 - 11
Basic Financial Statements	12
<i>Government-Wide Financial Statements</i>	13
Statement of Net Position	14
Statement of Activities	15
<i>Fund Financial Statements</i>	16
Governmental Funds	
Balance Sheet	17
Reconciliation of Fund Balances of Governmental Funds to Net Position on the Statement of Net Position	18
Statement of Revenues, Expenditures and Changes in Fund Balances	19
Reconciliation of the Statement of Revenues, Expenditures, and Changes in Fund Balances of Governmental Funds to the Statement of Activities	20
 <i>Notes to Financial Statements</i>	 21 - 49
 Required Supplementary Information	 50
Budgetary Comparison Schedule - General Fund	51
Schedule of the Reporting Unit's Proportionate Share of the Net Pension Liability	52
Schedule of the Reporting Unit's Pension Contributions	53
Schedule of the Reporting Unit's Proportionate Share of the Net OPEB Liability (Asset)	54
Schedule of the Reporting Unit's OPEB Contributions	55
Notes to the Required Supplementary Information	56

Forest Hills Public Schools

Table of Contents

Other Financial Statements and Schedules

Additional Supplementary Information	57
Combining, Individual Fund Financial Statements and Schedules	
General Fund:	58 - 59
Schedule of Revenues and Other Financing Sources - Budget to Actual	60 - 61
Schedule of Expenditures - Budget to Actual	62 - 63
Nonmajor Governmental Funds:	64 - 65
Combining Balance Sheet	66
Combining Statement of Revenues, Expenditures, and Changes in Fund Balances	67
Schedule of Revenues, Expenditures and Changes in Fund Balances - Budget to Actual - Special Revenue Funds	68 - 69
Schedules of Debt Service Requirements:	70
2014 Building and Site Bonds	71
2016 Building, Site and Refunding Bonds	72
2019 Building and Site Bonds	73
2020 Refunding Bonds	74
2021 Building and Site Bonds	75
2023 Building and Site Bonds	76
2024 Refunding Bonds	77

Forest Hills Public Schools

Table of Contents

Statistical Section (unaudited)	78
Contents of the Statistical Section	79
Net Position by Component, Last Ten Fiscal Years	80 - 81
Expenses, Program Revenues, and Net Expense, Last Ten Fiscal Years	82 - 83
General Revenues and Total Change in Net Position, Last Ten Fiscal Years	84 - 85
Fund Balances, Governmental Funds, Last Ten Fiscal Years	86 - 87
Governmental Funds Revenues, Last Ten Fiscal Years	88 - 89
Governmental Funds Expenditures and Debt Service Ratio, Last Ten Fiscal Years	90 - 91
Other Financing Sources (Uses) and Net Change in Fund Balances, Governmental Funds, Last Ten Fiscal Years	92 - 93
Taxable Value and Actual Value of Taxable Property, Last Ten Fiscal Years	94 - 95
Direct and Overlapping Property Tax Rates, Last Ten Fiscal Years	96 - 97
Principal Property Taxpayers, Current Year and Nine Years Ago	98 - 99
Property Tax Levies and Collections, Last Ten Fiscal Years	100
Outstanding Debt by Type, Last Ten Fiscal Years	101
Direct and Overlapping Governmental Activities Debt	102
Legal Debt Margin Information, Last Ten Fiscal Years	103
Demographic and Economic Statistics, Last Ten Calendar Years	104
Principal Employers in West Michigan, Current Year and 2014	105
Full-Time-Equivalent District Employees by Type, Last Ten Fiscal Years	106
Operating Statistics, Last Ten Fiscal Years	107
School Building Information	108 - 109
 Other Items	
Schedule of Expenditures of Federal Awards	110 - 112
Notes to Schedule of Expenditures of Federal Awards	113
Independent Auditor’s Report on Internal Control Over Financial Reporting and on Compliance and Other Matters Based on an Audit of Financial Statements Performed in Accordance with <i>Government Auditing Standards</i>	114 - 115
Independent Auditor’s Report on Compliance for Each Major Program and on Internal Control Over Compliance Required by the Uniform Guidance	116 - 118
Schedule of Findings and Questioned Costs	119
Schedule of Prior Year Audit Findings	120



October 9, 2024

The Board of Education
Forest Hills Public Schools
6590 Cascade Road
Grand Rapids, Michigan 49546-6428

Dear Board Members and Citizens of Forest Hills Public Schools:

This letter of transmittal provides an overview of the financial position of Forest Hills Public Schools (the District) from the perspective of the Superintendent and the Assistant Superintendent for Finance and Operations. It serves as an introduction to our Annual Comprehensive Financial Report (ACFR) for the fiscal year ended June 30, 2024. The ACFR is divided into three sections: introductory section, financial section, and statistical section. The introductory section includes the District's organizational chart, a list of principal officials and this letter of transmittal. The financial section contains the independent auditor's unmodified opinion letter and the Management's Discussion and Analysis report. The Management's Discussion and Analysis report provides a more detailed analysis of the financial condition of the District and should be read in conjunction with this letter. The District's government-wide financial statements, fund financial statements and supplemental information are also contained in this section. The statistical section includes selected financial, demographic, and general information, generally presented on a multi-year basis.

The District's Business Office has prepared this report with responsibility for the accuracy, fairness, and completeness of the presentation, including all disclosures, resting with the District. We believe the information is accurate in all material respects, is presented in a manner designed to fairly show the financial position and results of operations of the District and includes all disclosures necessary to enable the reader to gain an understanding of the District's financial affairs. The report includes a statistical section containing data on numerous financial trends as well as facility information.

State law requires that every school district publish, on November 1 after the close of each fiscal year, a complete set of audited financial statements. This report is published to fulfill that requirement for the fiscal year ended June 30, 2024.

The District

Forest Hills Public Schools is a suburban school district, located in Kent County and adjacent to the cities of Grand Rapids and East Grand Rapids. The District covers approximately 68 square miles and includes major portions of Ada, Cascade and Grand Rapids Townships, plus fractions of Cannon Township and the Cities of Kentwood and Grand Rapids. The District was formed in 1956 from a consolidation of 12 small K-6 and K-8 school districts. It is a fiscally independent school district governed by a seven-member elected Board of Education.

The District's blended enrollment for the 2023-24 school year was 9,077. Recently, the area has experienced a small decline in student population, and projections indicate a small decline in future enrollment. The projected enrollment for the 2024-25 fiscal year is 8,903. There are six K-4 elementary schools, two K-5 elementary schools, three 5-6 schools, one 6-8 middle school, two 7-8 middle schools, three 9-12 high schools, one post-secondary special education transition program and various other support buildings. The buildings range in age from 1 to 70 years.

Student Services Provided and Major Initiatives

Forest Hills Public Schools provides its students a comprehensive program of public education from the home delivery of services for Early Childhood Special Education students as early as age two through twelfth grade. The District has a broad-based curriculum designed to meet the individual needs of all students including regular daytime, gifted and talented, at-risk, special needs and alternative education pupils in collaboration with the Kent Intermediate School District. All students have exposure to current technology integrated across curriculum and access to comprehensive media centers. Students also have the opportunity to participate in a Spanish Immersion or Chinese Immersion program from pre-school through high school. A magnet environmental education program is also available to selected fifth and sixth grade students. In addition, the District offers a dual enrollment program whereby qualifying high school students may attend local colleges and universities, receiving both high school and college credit. The District's education program includes a wide array of special education services for eligible students. There are numerous opportunities for students to participate in extracurricular activities including music, drama, fine arts, intramural and interscholastic sports, clubs, and many other special interest activities.

Accounting Systems, Budgetary Control and Annual Audit

The District adheres to budgetary policies and procedures established by the Board of Education, including specific guidelines in the development and review of the budget. The Board of Education is required to adopt an initial budget for the fiscal year no later than June 30 preceding the beginning of the fiscal year on July 1. This annual budget serves as the foundation for the District's financial planning and control. The budget is prepared for the general fund and each special revenue fund. The District utilizes a line-item budget developed by the Assistant Superintendent for Finance and Operations and the Superintendent, and submitted to the Board of Education for approval and adoption. The budget development process includes input from employees, parents, and the community. This budget process is designed to effectively allocate resources to maximize student benefit.

The District integrates the budget with the accounting system and internal controls. We have designed the internal controls to provide reasonable, but not absolute, assurance for the safeguarding of assets against loss from unauthorized use, and for maintaining accountability of the assets. These controls also provide assurance on the reliability of the financial records necessary for producing financial statements. We believe our budgetary and internal controls adequately safeguard District assets and provide reasonable assurance that errors or fraud that could be material to the financial statements are prevented or would be detected within a timely period.

The District is required to have an annual audit performed of its financial statements. The financial statements are the responsibility of the management of the District, and the auditors are expressing opinions on the statements. There is no scope limitation.

Relevant Financial Policies

The District has adopted a comprehensive set of financial policies. During the current year, one of these policies was particularly relevant. The District has a policy that requires fund balance equal to 10 percent of the adopted general fund budget be maintained for the purposes of protecting the cash flow position of the District and avoiding the need to borrow against either anticipated state aid payments or local property tax revenues for school operating purposes. During the current fiscal year, the District's use of fund balance was limited to available reserves above the 10 percent threshold.

The District maintains a prudent cash management and investment program. The policy and procedures are designed to maximize interest earnings on available cash balances with minimal principal investment risk. The District's investments may include uninsured and unregistered investments for which the securities are held by the counterparty or by its trust department or agent and not in the District's name.

Economic Environment

Michigan voters approved the state constitutional amendment known as Proposal A in 1994. Funding of District operations shifted dramatically from local property tax revenue to State Aid as a result of this amendment. Voter approval of the District's 2018 and 2023 bond issue has provided additional funding for essential capital projects.

Certificate of Excellence

The District has earned the Association of School Business Officials (ASBO) Certificate of Excellence for the Annual Comprehensive Financial Report for the fiscal year ended June 30, 2023. The District first received the ASBO award in 1997, and has received it every year since. This achievement is a source of pride for both the School Administration and the Board of Education, whose support is a necessity for maintaining such high standards for financial reporting.

While a Certificate of Excellence is valid for a period of only one year, the District believes its current report continues to conform to program standards, and we are submitting our report to ASBO to determine its eligibility for another certificate.

In Appreciation

We would like to express appreciation to a highly dedicated Board of Education that has adopted sound policies and programs designed to continue the District's growth and quality improvement during an era of significant changes and challenges.

Respectfully submitted,



Benjamin Kirby
Superintendent



Julie Davis
Assistant Superintendent
for Finance and Operations

**Forest Hills Public Schools
Elected Officials and Administrative Staff**

2023-2024 Board of Education

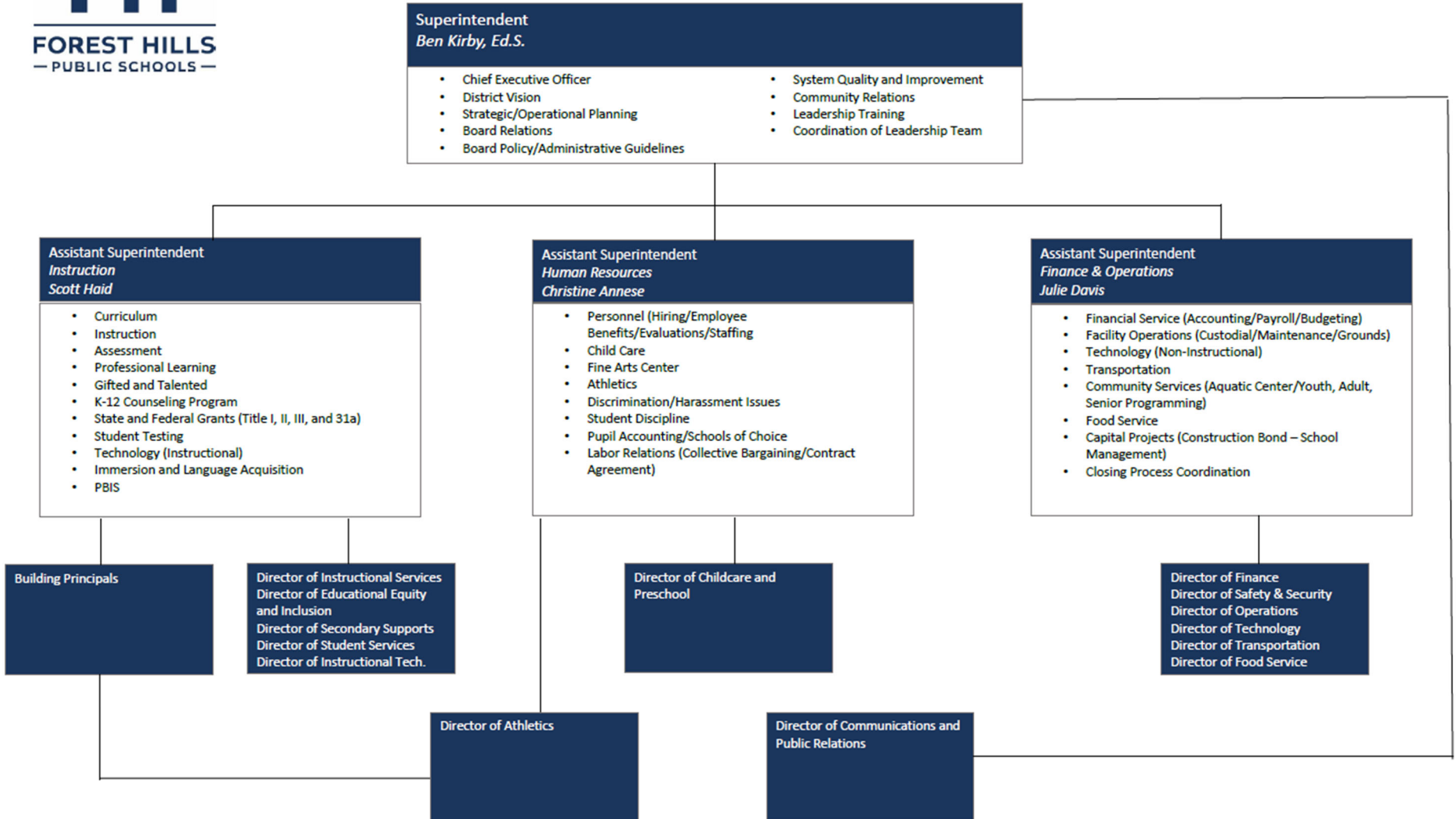
President	Kristen Fauson
Vice President	Kristen Covelle
Secretary	Maggie Terryn
Treasurer	CJ Michaud
Trustee	Mary Vonck
Trustee	Malorie Ninemeier
Trustee	Holly DeBoer

2023-2024 Administrative Staff

Superintendent	Ben Kirby
Assistant Superintendent for Finance and Operations	Julie Davis
Assistant Superintendent for Instruction	Scott Haid
Assistant Superintendent for Human Resources	Christine Annese



Organizational Chart and Administrative Responsibilities



In partnership with our community, Forest Hills Public Schools will provide all learners with opportunities to acquire the knowledge, skills, and experiences necessary to build meaningful and productive lives.

REV 7.2024



ASSOCIATION OF
SCHOOL BUSINESS OFFICIALS
INTERNATIONAL

**The Certificate of Excellence in Financial Reporting
is presented to**

Forest Hills Public Schools

**for its Annual Comprehensive Financial Report
for the Fiscal Year Ended June 30, 2023.**

The district report meets the criteria established for
ASBO International's Certificate of Excellence in Financial Reporting.



A handwritten signature in black ink, reading 'Ryan S. Stechschulte'.

Ryan S. Stechschulte
President

A handwritten signature in black ink, reading 'James M. Rowan'.

James M. Rowan, CAE, SFO
CEO/Executive Director



2425 E. Grand River Ave.,
Suite 1, Lansing, MI 48912

☎ 517.323.7500

📠 517.323.6346

INDEPENDENT AUDITOR'S REPORT

To the Board of Education
Forest Hills Public Schools

Opinions

We have audited the accompanying financial statements of the governmental activities, each major fund, and the aggregate remaining fund information of Forest Hills Public Schools (the District) as of and for the year ended June 30, 2024, and the related notes to the financial statements, which collectively comprise the Forest Hills Public Schools' basic financial statements as listed in the table of contents.

In our opinion, the financial statements referred to above present fairly, in all material respects, the respective financial position of the governmental activities, each major fund, and the aggregate remaining fund information of Forest Hills Public Schools, as of June 30, 2024, and the respective changes in financial position for the year then ended in accordance with accounting principles generally accepted in the United States of America.

Basis for Opinions

We conducted our audit in accordance with auditing standards generally accepted in the United States of America and the standards applicable to financial audits contained in *Government Auditing Standards*, issued by the Comptroller General of the United States. Our responsibilities under those standards are further described in the Auditor's Responsibilities for the Audit of the Financial Statements section of our report. We are required to be independent of Forest Hills Public Schools and to meet our other ethical responsibilities, in accordance with the relevant ethical requirements relating to our audit. We believe that the audit evidence we have obtained is sufficient and appropriate to provide a basis for our audit opinions.

Responsibilities of Management for the Financial Statements

Management is responsible for the preparation and fair presentation of the financial statements in accordance with accounting principles generally accepted in the United States of America, and for the design, implementation, and maintenance of internal control relevant to the preparation and fair presentation of financial statements that are free from material misstatement, whether due to fraud or error.

In preparing the financial statements, management is required to evaluate whether there are conditions or events, considered in the aggregate, that raise substantial doubt about Forest Hills Public Schools' ability to continue as a going concern for twelve months beyond the financial statement date, including any currently known information that may raise substantial doubt shortly thereafter.

Auditor's Responsibilities for the Audit of the Financial Statements

Our objectives are to obtain reasonable assurance about whether the financial statements as a whole are free from material misstatement, whether due to fraud or error, and to issue an auditor's report that includes our opinions. Reasonable assurance is a high level of assurance but is not absolute assurance and therefore is not a guarantee that an audit conducted in accordance with generally accepted auditing standards and *Government Auditing Standards* will always detect a material misstatement when it exists. The risk of not detecting a material misstatement resulting from fraud is higher than for one resulting from error, as fraud may involve collusion, forgery, intentional omissions, misrepresentations, or the override of internal control. Misstatements are considered material if there is a substantial likelihood that, individually or in the aggregate, they would influence the judgment made by a reasonable user based on the financial statements.

In performing an audit in accordance with generally accepted auditing standards and *Government Auditing Standards*, we:

- Exercise professional judgment and maintain professional skepticism throughout the audit.
- Identify and assess the risks of material misstatement of the financial statements, whether due to fraud or error, and design and perform audit procedures responsive to those risks. Such procedures include examining, on a test basis, evidence regarding the amounts and disclosures in the financial statements.
- Obtain an understanding of internal control relevant to the audit in order to design audit procedures that are appropriate in the circumstances, but not for the purpose of expressing an opinion on the effectiveness of Forest Hills Public Schools' internal control. Accordingly, no such opinion is expressed.
- Evaluate the appropriateness of accounting policies used and the reasonableness of significant accounting estimates made by management, as well as evaluate the overall presentation of the financial statements.
- Conclude whether, in our judgment, there are conditions or events, considered in the aggregate, that raise substantial doubt about Forest Hills Public Schools' ability to continue as a going concern for a reasonable period of time.

We are required to communicate with those charged with governance regarding, among other matters, the planned scope and timing of the audit, significant audit findings, and certain internal control-related matters that we identified during the audit.

Required Supplementary Information

Accounting principles generally accepted in the United States of America require that the management's discussion and analysis and other required supplementary information, as identified in the table of contents, be presented to supplement the basic financial statements. Such information is the responsibility of management and, although not a part of the basic financial statements, is required by the Governmental Accounting Standards Board who considers it to be an essential part of financial reporting for placing the basic financial statements in an appropriate operational, economic, or historical context. We have applied certain limited procedures to the required supplementary information in accordance with auditing standards generally accepted in the United States of America, which consisted of inquiries of management about the methods of preparing the information and comparing the information for consistency with management's responses to our inquiries, the basic financial statements, and other knowledge we obtained during our audit of the basic financial statements. We do not express an opinion or provide any assurance on the information because the limited procedures do not provide us with sufficient evidence to express an opinion or provide any assurance.

Supplementary Information

Our audit was conducted for the purpose of forming opinions on the financial statements that collectively comprise Forest Hills Public Schools' basic financial statements. The accompanying additional supplementary information, as identified in the table of contents, including the schedule of expenditures of federal awards, as required by Title 2 U.S. Code of Federal Regulations Part 200, *Uniform Administrative Requirements, Cost Principles, and Audit Requirements for Federal Awards*, are presented for purposes of additional analysis and are not a required part of the basic financial statements. Such information is the responsibility of management and was derived from and relates directly to the underlying accounting and other records used to prepare the basic financial statements. The information has been subjected to the auditing procedures applied in the audit of the basic financial statements and certain additional procedures, including comparing and reconciling such information directly to the underlying accounting and other records used to prepare the basic financial statements or to the basic financial statements themselves, and other additional procedures in accordance with auditing standards generally accepted in the United States of America. In our opinion, the additional supplementary information, including the schedule of expenditures of federal awards are fairly stated, in all material respects, in relation to the basic financial statements as a whole.

Other Information

Management is responsible for the other information included in the annual report. The other information comprises the introductory and statistical sections but does not include the basic financial statements and our auditor's report thereon. Our opinions on the basic financial statements do not cover the other information, and we do not express an opinion or any form of assurance thereon.

In connection with our audit of the basic financial statements, our responsibility is to read the other information and consider whether a material inconsistency exists between the other information and the basic financial statements, or the other information otherwise appears to be materially misstated. If, based on the work performed, we conclude that an uncorrected material misstatement of the other information exists, we are required to describe it in our report.

Other Reporting Required by Government Auditing Standards

In accordance with *Government Auditing Standards*, we have also issued our report dated October 9, 2024, on our consideration of Forest Hills Public Schools' internal control over financial reporting and on our tests of its compliance with certain provisions of laws, regulations, contracts, and grant agreements and other matters. The purpose of that report is solely to describe the scope of our testing of internal control over financial reporting and compliance and the results of that testing, and not to provide an opinion on the effectiveness of Forest Hills Public Schools' internal control over financial reporting or on compliance. That report is an integral part of an audit performed in accordance with *Government Auditing Standards* in considering Forest Hills Public Schools' internal control over financial reporting and compliance.

Maney Costeiran PC

October 9, 2024

**Forest Hills Public Schools
Management's Discussion and Analysis
For Fiscal Year Ended June 30, 2024**

As management of Forest Hills Public Schools (the District), we offer this narrative overview and analysis of the financial activities of Forest Hills Public Schools for the year ended June 30, 2024. Generally accepted accounting principles (GAAP) require the reporting of two types of financial statements: the Government-Wide Financial Statements and the Fund Financial Statements.

Government-Wide Financial Statements

The Government-Wide Financial Statements are prepared using full accrual accounting and more closely represent those presented by business and industry. All of the District's assets, deferred outflows of resources, liabilities, and deferred inflows of resources, both short and long-term, are reported. As such, these statements include capital assets, net of related depreciation/amortization, as well as the bonded debt and other long-term liabilities of the District.

The Statement of Net Position presents information on all of the District's assets, deferred outflows of resources, liabilities, and deferred inflows of resources, with the difference reported as net position. Over time, increases and decreases in net position can serve as a barometer of financial health and whether the District's financial position is improving or deteriorating.

The Statement of Activities presents information showing how the District's net position changed during the year. This statement focuses on both the gross and net cost of the various activities which are supported by the District's property taxes, state aid and other revenues. This presentation is intended to summarize and simplify the user's analysis of the cost of the various services.

Fund Financial Statements

The governmental fund financial statements are reported on a modified accrual basis in that only those assets that are measurable and currently available are reported. Liabilities are recognized to the extent that they are normally expected to be paid with current financial resources.

The fund statements are formatted to comply with the legal requirements of the Michigan Department of Education's Accounting Manual. In the State of Michigan, school districts' major instruction and instructional support activities are reported in the General Fund. Additional activities are reported in Special Revenue Funds, Debt Service Funds and Capital Project Funds.

In the fund financial statements, capital assets purchased are reported as expenditures in the year of acquisition with no asset being reported. The issuance of debt is recorded as a financial resource. The current year's payments of principal and interest on long-term obligations are recorded as expenditures. The obligations for future years' debt obligations are not recorded in the fund financial statements.

Summary of Net Position

The following schedule summarizes the net position at June 30, 2024 and 2023:

	2024	2023
Assets		
Current assets	\$ 91,518,715	\$ 109,099,086
Net other postemployment benefits asset	3,513,881	
Capital assets	499,280,911	472,789,810
Less accumulated depreciation/amortization	(247,385,611)	(232,326,249)
Capital assets, net book value	251,895,300	240,463,561
Total Assets	346,927,896	349,562,647
Deferred Outflows of Resources	75,117,313	97,327,529
Liabilities		
Current liabilities	28,349,626	24,325,600
Long-term liabilities	135,262,248	158,820,626
Net other postemployment benefit liability		13,840,268
Net pension liability	206,158,983	243,246,630
Total Liabilities	369,770,857	440,233,124
Deferred Inflow of Resources	64,692,457	48,362,187
Net Position		
Net investment in capital assets	151,636,386	142,937,027
Restricted for debt service	1,578,131	1,478,098
Restricted for net other postemployment benefits	3,513,881	
Unrestricted	(169,146,503)	(186,120,260)
Total Net Position	\$ (12,418,105)	\$ (41,705,135)

Capital Assets and Long-Term Debt

Capital Assets

By the end of the 2023-24 fiscal year, the District had invested \$499.3 million in a broad range of capital assets, including school buildings and facilities, site improvements, right to use subscription-based IT, school buses and other vehicles, and various types of equipment. Depreciation/amortization expense for the year amounted to approximately \$17.1 million, bringing accumulated depreciation/amortization to approximately \$247.4 million as of June 30, 2024.

**Capital Assets at Year-End
June 30
(Net of Depreciation/Amortization - in millions)**

	2024	2023
Buildings and improvements	\$ 178.4	\$ 150.2
Land and land improvements	18.8	19.0
Machinery, furniture and equipment	16.3	17.8
Transportation equipment	2.5	2.5
Construction in progress	35.1	50.3
Right to use - subscription-based IT	0.8	0.7
	\$ 251.9	\$ 240.5

The increase in capital assets is due to ongoing depreciation/amortization of existing assets being less than the asset additions related to the 2019, 2021 and 2023 Building and Site bonds.

Long-Term Obligations

At June 30, 2024, the District had approximately \$337.9 million in long-term obligations outstanding, which included approximately \$116.1 million in general obligation bonds. This represents a net decrease of approximately \$21.1 million in bonds payable at the close of the fiscal year due primarily to issuing new refunding bonds and the retirement of principal.

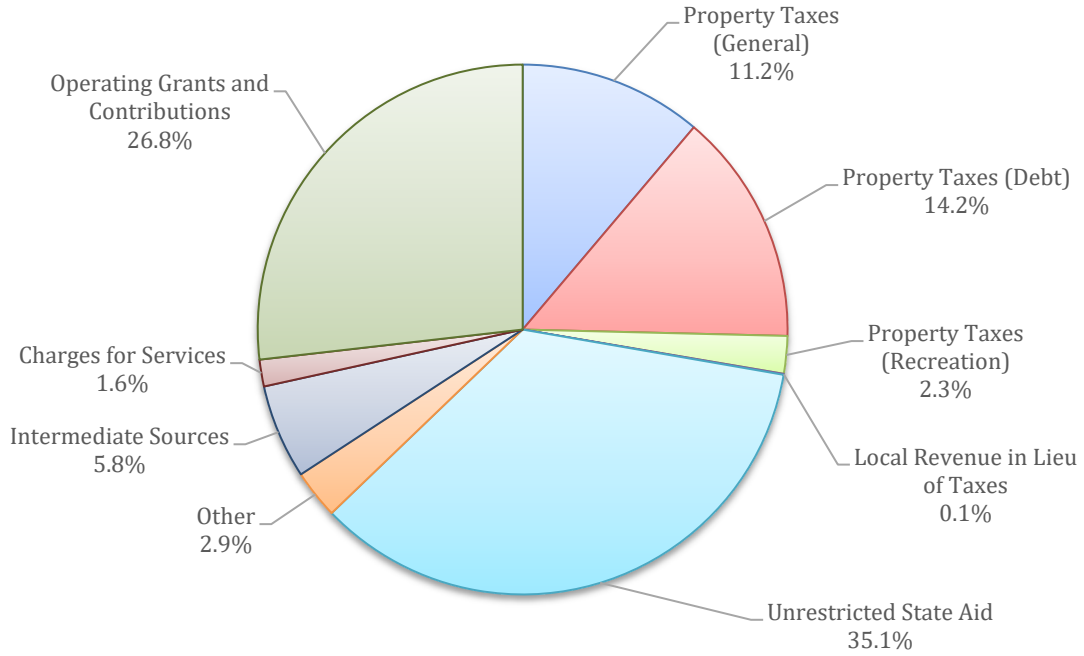
For more detailed information regarding capital assets and long-term obligations, please review the notes to the financial statements located in the financial section of this report.

Results of Operations

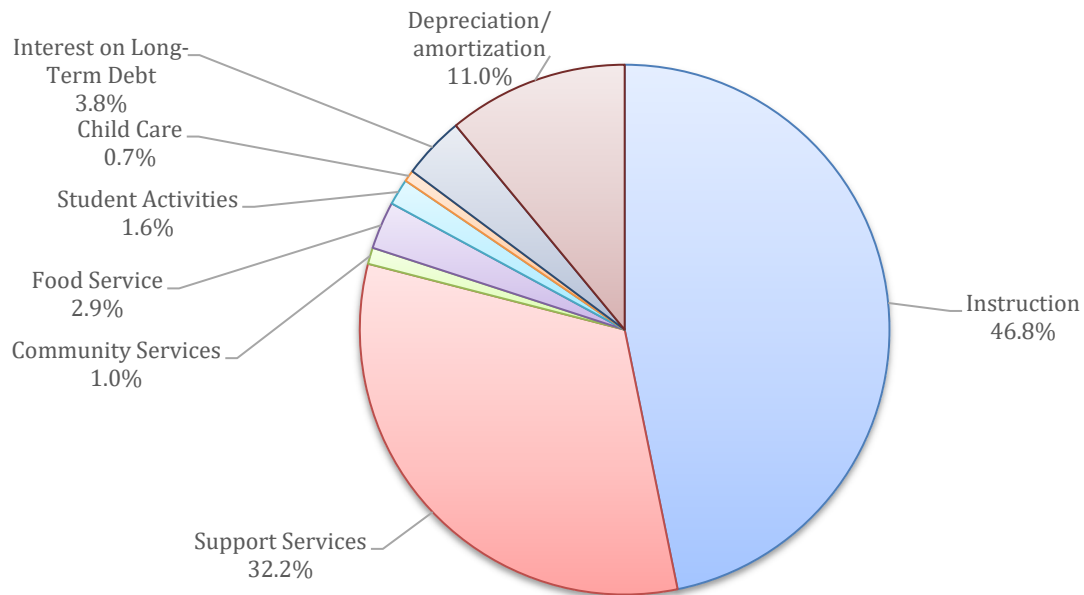
For the fiscal years ended June 30, 2024 and 2023 the results of operations on a government-wide basis were:

	2024	2023	Percent Change
General Revenues			
Property taxes levied for general purposes	\$ 20,658,627	\$ 19,111,423	8.10%
Property taxes levied for debt service	26,232,218	24,459,297	7.25%
Property taxes levied for recreation	4,253,487	3,968,025	7.19%
Local revenue in lieu of taxes	98,335	97,777	0.57%
State of Michigan aid, unrestricted	64,825,871	63,048,075	2.82%
Investment earnings	4,845,676	2,455,257	97.36%
Intermediate sources	10,632,174	10,704,165	-0.67%
Miscellaneous	657,917	1,199,637	-45.16%
Total general revenues	132,204,305	125,043,656	5.73%
Program Revenues			
Charges for services	3,030,935	4,783,032	-36.63%
Operating grants and contributions	49,530,071	33,348,878	48.52%
Total program revenues	52,561,006	38,131,910	37.84%
Total Revenues	184,765,311	163,175,566	13.23%
Expenses			
Instruction	72,810,715	73,823,425	-1.37%
Support services	49,994,788	46,041,659	8.59%
Community services	1,601,283	1,584,929	1.03%
Food service	4,461,263	4,047,081	10.23%
Student/school activities	2,469,660	2,608,731	-5.33%
Child care	1,146,268	1,310,947	-12.56%
Interest on long-term debt	5,917,931	5,622,101	5.26%
Unallocated depreciation/amortization	17,076,373	11,573,516	47.55%
Total Expenses	155,478,281	146,612,389	6.05%
Increase in Net Position	29,287,030	16,563,177	76.82%
Net Position, beginning of year	(41,705,135)	(58,268,312)	-28.43%
Net Position, end of year	\$ (12,418,105)	\$ (41,705,135)	-70.22%

Government-wide Revenues



Government-wide Expenses



Analysis of Significant Revenues and Expenditures

Significant revenues and expenditures are discussed in the segments below.

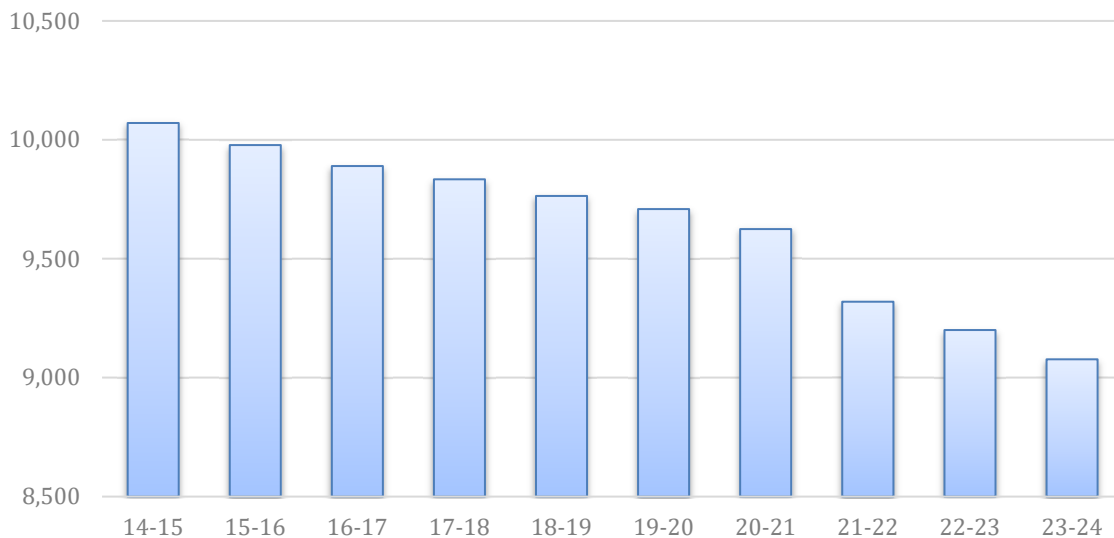
State Sources

The District is funded primarily by state aid, which increased by an additional \$458 per pupil resulting in a final per-pupil allocation of \$9,608 for 2023-24. The State of Michigan funds districts based on a blended student enrollment. The blended enrollment consists of 90% of the current year's fall count and 10% of the prior fiscal year's spring count. Blended state aid membership was 9,077 and 9,200 in 2023-24 and 2022-23, respectively.

Student Enrollment

The District's enrollment for the 2023-24 fall count was 9,062 students. This is a decrease of 127 students over the prior year. Forest Hills Public Schools is centrally located in Kent County. Projections indicate a small decline in future enrollment. Enrollment over the last ten years is illustrated as follows:

Enrollment History



Property Taxes

The District can levy up to 18.0 mills of property taxes for operations on non-pre properties; however, due to the mandatory reductions required by the Headlee Amendment the District levied 17.6614 mills. According to Michigan law, the tax levy is based on the taxable valuation of properties. The annual taxable valuation increases are capped at the rate of the prior year's Consumer Price Index increase or 5%, whichever is less. At the time property is sold, its taxable valuation is readjusted to the State Equalized Value, which in theory is 50% of the property's market value. In November 2023, voters approved a two-year increase to restore the millage reduction in 2024-25 and 2025-26.

For the 2023-24 fiscal year, the District's non-pre current year property tax collections were approximately \$20.8 million. This is an increase of 8.3% from the prior year due primarily to an increase in property values.

In February 2004, voters approved 1.0 mill to be levied on all property to support recreational activities in the District; however, due to the mandatory reductions required by the Headlee Amendment the District levied 0.9815 mills. The total current tax year amount was approximately \$4.2 million. This is an increase of 5.0% from the prior year due primarily to an increase in property values. In November 2022, voters approved the renewal for a 10-year period.

The District levied 6.05 mills of property taxes on all classes of property located within the District for bonded debt service. This levy is not subject to rollback provisions and is used to pay the principal and interest on bond obligations. The total current tax year amount collected for debt service in 2023-24 was approximately \$26.2 million. This is an increase of 6.9% from the prior year due primarily to an increase in property values.

General Fund Budgetary Highlights

The Uniform Budgeting Act of the State of Michigan requires the local Board of Education to approve the original budget for the upcoming fiscal year prior to its starting on July 1. Any amendments made to the operating budget must be approved by the Board prior to the close of the fiscal year on June 30.

For the 2023-24 fiscal year, the District amended the budget two times: once in January 2024, and a final amendment in June 2024. The following schedule shows a comparison of the original budget, the final amended budget, and actual totals from operations.

	Original Budget	Final Budget	Actual	Variance With Final Budget - Positive (Negative)	Percent Variance
Total Revenues and Other Financing Sources/Uses	\$ 129,334,252	\$ 138,688,876	\$ 140,688,735	\$ 1,999,859	1.4%
Expenditures					
Instruction	\$ 78,092,734	\$ 81,529,143	\$ 80,438,536	\$ 1,090,607	1.3%
Support services	49,800,313	53,867,652	52,090,000	1,777,652	3.3%
Community services	1,702,183	1,866,842	1,697,325	169,517	9.1%
Other transactions	13	478,578	551,463	(72,885)	(15.2%)
Total Expenditures	\$ 129,595,243	\$ 137,742,215	\$ 134,777,324	\$ 2,964,891	2.2%

The actual revenues and other financing sources/uses for the fund were \$140.7 million. This is greater than the original budget estimate of \$129.3 million and is greater than the final amended budget amount of \$138.7 million. The actual expenditures were \$134.8 million. This is more than the original budget estimate of \$129.9 million and less than the final amended budget amount of \$137.7 million.

The variance between actual revenues and the original and final revenue budgets is small and is consistent with the District’s historical revenue variances.

The variances between the actual expenditures and the original and final expenditure budgets are indicative of the district’s conservative budget estimates during development and amendment of the budget.

Analysis of Financial Position

General Fund

The District maintains a healthy amount of reserves at 18.2 percent of expenditures following an approximate \$5.9 million increase to fund balance. Management will continue to make conservative reductions of operating expenses, particularly focusing on employee attrition management, and increase revenues where opportunities exist. The budget adopted for 2024-25 reflects a use of fund balance.

Capital Projects Fund

In November 2018, voters authorized \$130 million in debt to finance capital projects throughout the District. The first series of bonds were sold in May 2019 totaling \$38 million including the bond premium. Planning commenced during the 2018-19 fiscal year, with construction beginning in the summer of 2019. At the close of the 2023-24 fiscal year, the funds restricted for future capital projects amounted to approximately \$513,000.

The second series of bonds were sold in May 2021 totaling \$63.2 million including the bond premium. Planning commenced during the 2020-21 fiscal year, with construction starting in the summer of 2021. At the close of the 2023-24 fiscal year, the funds restricted for future capital projects amounted to approximately \$1.4 million.

The third series of bonds were sold in May 2023 totaling \$29.1 million including the bond premium. Planning commenced during the 2022-23 fiscal year, with construction starting in the summer of 2023. At the close of the 2023-24 fiscal year, the funds restricted for capital projects amounted to approximately \$30.7 million.

Factors Bearing on the District's Future

At the time these financial statements were prepared and audited, the District was aware of the following items that could significantly affect its future health:

- The pandemic caused by COVID-19 continues to create challenges for school districts. The long-term impact remains to be seen. However, the federal government has authorized funding under the Elementary and Secondary School Emergency Relief Fund (ESSER) and the American Rescue Plan (ARP). While these funds have helped as the district addressed the challenges caused by the pandemic, they are one-time and not ongoing financial support. The funds allocated must be spent by September 30, 2024.
- Another important factor affecting the District is student count. The amount of State foundation allowance revenue the District receives is based on the blended student count and the foundation allowance per pupil. The District has experienced minor reductions in its enrollment the last several years due to an overall decline in the birth rate. The enrollment decline is expected to continue into future years based on current forecasts.
- The District is part of a statewide multi-employer defined benefit pension plan. Recent pension reform enacted at the state level includes as goals the limiting of future rate increases and a reduction in the plan's unfunded liability.
- The State of Michigan continues to increase its focus on student achievement. Results of standardized test scores from the Michigan Student Test of Educational Progress are compared from year to year with the results being tabulated by school building and by district. There is a concerted effort to eliminate any barriers impacting student learning and to provide social and emotional learning support.

Contacting the District's Financial Management

This financial report is designed to provide our citizens, taxpayers, customers, investors, and creditors with a general overview of the District's finances and to demonstrate the District's accountability for the money it receives. If you have questions about this report, or need additional financial information, please contact the Assistant Superintendent for Finance and Operations, Julie Davis, Forest Hills Public Schools, Grand Rapids, Michigan.

Basic Financial Statements

Government-Wide Financial Statements

Forest Hills Public Schools
Government-Wide Financial Statements
Statement of Net Position

<i>June 30, 2024</i>	Governmental Activities
Assets	
Cash and investments	\$ 71,643,198
Accounts receivable	323,864
Intergovernmental receivable	18,752,005
Inventories	205,904
Prepaid expenses	368,744
Deposits	225,000
Net other postemployment benefits asset	3,513,881
Capital assets, net of accumulated depreciation/amortization	209,068,931
Capital assets, not being depreciated/amortized	42,826,369
Total Assets	346,927,896
Deferred Outflows of Resources	
Deferred charge on refunding	198,465
Related to other postemployment benefits	13,758,813
Related to pension	61,160,035
Total Deferred Outflows of Resources	75,117,313
Liabilities	
Accounts payable	4,769,321
Intergovernmental payable	4,871,127
Accrued interest	907,624
Accrued payroll	6,929,945
Accrued retirement	4,206,886
Accrued expenses	163,412
Arbitrage liability	2,348,332
Unearned revenue	4,152,979
Noncurrent liabilities	
Due within one year	25,057,202
Due in more than one year	110,205,046
Net pension liability	206,158,983
Total Liabilities	369,770,857
Deferred Inflows of Resources	
Related to other postemployment benefits	29,101,249
Related to pension	23,344,712
Related to state aid funding for pension	12,246,496
Total Deferred Inflows of Resources	64,692,457
Net Position	
Net investment in capital assets	151,636,386
Restricted for debt service	1,578,131
Restricted for net other postemployment benefits	3,513,881
Unrestricted	(169,146,503)
Total Net Position	\$ (12,418,105)

The notes to the basic financial statements are an integral part of this statement.

Forest Hills Public Schools

Government-Wide Financial Statements Statement of Activities

<i>Year ended June 30, 2024</i>	Program Revenues			Net (Expense) Revenue and Changes in Net Position
	Expenses	Charges for Services	Operating Grants and Contributions	Total
Governmental Activities				
Instruction	\$ 72,810,715	\$ 146,377	\$ 27,447,648	\$ (45,216,690)
Support services	49,994,788	831,396	14,542,170	(34,621,222)
Community services	1,601,283	461,782	92,182	(1,047,319)
Food service	4,461,263	565,309	4,868,363	972,409
Student/school activities	2,469,660		2,554,678	85,018
Child care	1,146,268	1,026,071	25,030	(95,167)
Interest on long-term debt	5,917,931			(5,917,931)
Unallocated depreciation/amortization*	17,076,373			(17,076,373)
Total School District	\$ 155,478,281	\$ 3,030,935	\$ 49,530,071	(102,917,275)

General revenues:

Property taxes levied for general purposes	20,658,627
Property taxes levied for debt service	26,232,218
Property taxes levied for recreation	4,253,487
Local revenue in lieu of taxes	98,335
Unrestricted state aid	64,825,871
Investment earnings	4,845,676
Intermediate sources	10,632,174
Miscellaneous	657,917

Total general revenues	132,204,305
-------------------------------	--------------------

Change in net position	29,287,030
------------------------	------------

Net Position, beginning of year	(41,705,135)
--	---------------------

Net Position, end of year	\$ (12,418,105)
----------------------------------	------------------------

* Unallocated depreciation/amortization includes 100% of depreciation/amortization expense, no depreciation/amortization expense is allocated to various programs.

The notes to the basic financial statements are an integral part of this statement.

Fund Financial Statements

Forest Hills Public Schools

Governmental Funds Balance Sheet

<i>June 30, 2024</i>	General Fund	Debt Service Fund	2021 Capital Projects Fund	2023 Capital Projects Fund	Nonmajor Governmental Funds	Total Governmental Funds
Assets						
Cash and investments	\$ 25,874,722	\$ 2,813,224	\$ 4,920,303	\$ 30,700,209	\$ 7,334,740	\$ 71,643,198
Accounts receivable	309,022	767			14,075	323,864
Intergovernmental receivable	18,728,967				23,038	18,752,005
Due from other funds	330,128					330,128
Inventories	166,431				39,473	205,904
Prepaid expenditures	344,659				24,085	368,744
Deposits					225,000	225,000
Total Assets	\$ 45,753,929	\$ 2,813,991	\$ 4,920,303	\$ 30,700,209	\$ 7,660,411	\$ 91,848,843
Liabilities and Fund Balances						
Liabilities						
Accounts payable	\$ 1,191,894		\$ 3,506,699		\$ 70,728	\$ 4,769,321
Accrued payroll	8,901,730				53,018	8,954,748
Accrued retirement	2,158,831				23,252	2,182,083
Accrued expenditures	128,397				35,015	163,412
Intergovernmental payable	4,871,110				17	4,871,127
Due to other funds		\$ 328,236			1,892	330,128
Unearned revenue	4,029,709				123,270	4,152,979
Total liabilities	21,281,671	328,236	3,506,699		307,192	25,423,798
Fund Balances						
Nonspendable - inventories	166,431					166,431
Nonspendable - prepaid expenditures	344,659					344,659
Nonspendable - deposits					225,000	225,000
Restricted for capital projects			1,413,604	\$ 30,700,209	512,919	32,626,732
Restricted for debt service		2,485,755				2,485,755
Restricted for food service					1,811,710	1,811,710
Committed for student/school activities					2,618,597	2,618,597
Committed for child care program					2,184,993	2,184,993
Assigned for subsequent year's budget	1,505,210					1,505,210
Unassigned	22,455,958					22,455,958
Total fund balances	24,472,258	2,485,755	1,413,604	30,700,209	7,353,219	66,425,045
Total Liabilities and Fund Balances	\$ 45,753,929	\$ 2,813,991	\$ 4,920,303	\$ 30,700,209	\$ 7,660,411	\$ 91,848,843

The notes to the basic financial statements are an integral part of this statement.

Forest Hills Public Schools

Reconciliation of Fund Balances of Governmental Funds to Net Position on the Statement of Net Position

Year ended June 30, 2024

Total fund balances - total governmental funds		\$ 66,425,045
Amounts reported for governmental activities in the statement of net position are different because:		
Deferred outflows of resources - deferred charge on refunding		198,465
Deferred outflows of resources - related to pension		61,160,035
Deferred outflows of resources - related to other postemployment benefits		13,758,813
Deferred inflows of resources - related to pension		(23,344,712)
Deferred inflows of resources - related to other postemployment benefits		(29,101,249)
Deferred inflows of resources - related to state funding for pension		(12,246,496)
Some assets are not current financial resources and therefore are not reported in the Governmental Funds Balance Sheet		
Noncurrent assets at year-end consist of:		
Net other postemployment benefits asset		3,513,881
Capital assets used in governmental activities are not financial resources and, therefore, are not reported in the funds.		
These assets consist of:		
Capital assets, at cost	\$ 499,280,911	
Accumulated depreciation/amortization	<u>(247,385,611)</u>	
Net capital assets		251,895,300
Long-term liabilities, including interest payable, are not due and payable in the current period and, therefore, are not reported in the funds. Balances are as follows:		
General obligation bonds	(116,070,000)	
Deferred issuance premium	(16,756,482)	
Accrued interest on bonds	(907,624)	
Direct borrowings and direct placements	(257,629)	
Compensated absences	(2,156,137)	
Retirement contracts payable	(22,000)	
Net pension liability	(206,158,983)	
Arbitrage liability	<u>(2,348,332)</u>	
Net long-term liabilities		<u>(344,677,187)</u>
Net Position of Governmental Activities		\$ <u>(12,418,105)</u>

The notes to the basic financial statements are an integral part of this statement.

Forest Hills Public Schools

Statement of Revenues, Expenditures, and Changes in Fund Balances

<i>Year ended June 30, 2024</i>	General Fund	Debt Service Fund	2021 Capital Projects Fund	2023 Capital Projects Fund	Nonmajor Governmental Funds	Total Governmental Funds
Revenues						
Property taxes	\$ 24,912,114	\$ 26,232,218				\$ 51,144,332
Other local sources	3,948,208	347,903	\$ 1,098,244	\$ 1,607,269	\$ 4,568,639	11,570,263
State sources	92,333,501	531,331			3,239,883	96,104,715
Federal sources	8,200,779				1,653,510	9,854,289
Intermediate sources	10,634,533					10,634,533
Total revenues	140,029,135	27,111,452	1,098,244	1,607,269	9,462,032	179,308,132
Expenditures						
Current						
Instruction	80,438,536					80,438,536
Support services	52,090,000					52,090,000
Community services	1,697,325					1,697,325
Food service					4,602,907	4,602,907
Student/school activities					2,581,941	2,581,941
Child care					1,185,487	1,185,487
Debt service						
Principal	367,433	20,560,000				20,927,433
Interest and other	20,830	5,989,048				6,009,878
Payment to refunded bond escrow agent		10,053,224				10,053,224
Bond issuance costs		129,954				129,954
Capital outlay			28,365,673		910,341	29,276,014
Outgoing transfers and other	163,200					163,200
Total expenditures	134,777,324	36,732,226	28,365,673		9,280,676	209,155,899
Excess (deficiency) of revenues over (under) expenditures	5,251,811	(9,620,774)	(27,267,429)	1,607,269	181,356	(29,847,767)
Other Financing Sources (Uses)						
Issuance of bonds		9,500,000				9,500,000
Premium on bonds issued		131,955				131,955
Sale of capital assets	71,165					71,165
Proceeds from subscription-based IT arrangements	208,448					208,448
Transfers in	380,000				13	380,013
Transfers out	(13)				(380,000)	(380,013)
Total other financing sources (uses)	659,600	9,631,955			(379,987)	9,911,568
Changes in fund balances	5,911,411	11,181	(27,267,429)	1,607,269	(198,631)	(19,936,199)
Fund Balances, beginning of year	18,560,847	2,474,574	28,681,033	29,092,940	7,551,850	86,361,244
Fund Balances, end of year	\$ 24,472,258	\$ 2,485,755	\$ 1,413,604	\$ 30,700,209	\$ 7,353,219	\$ 66,425,045

The notes to the basic financial statements are an integral part of this statement.

Forest Hills Public Schools

Reconciliation of the Statement of Revenues, Expenditures, and Changes in Fund Balances of Governmental Funds to the Statement of Activities

Year ended June 30, 2024

Changes in fund balances - total governmental funds		\$ (19,936,199)
Amounts reported for governmental activities in the statement of activities are different because:		
Governmental funds report capital outlays as expenditures.		
However, in the statement of activities, the cost of those assets is allocated over their estimated useful lives as depreciation/amortization expense.		
Capital outlay	\$ 28,508,112	
Depreciation/amortization expense	<u>(17,076,373)</u>	
		11,431,739
The issuance of long-term debt provides current financial resources to governmental funds, while the repayment of principal uses current financial resources. In the statement of net position, bonds issued are reported as a liability and repayments reduce the liability.		
Proceeds from refunding bonds issued	(9,500,000)	
Payment to refunded bond escrow agent	10,053,224	
Premium on issuance of bonds	(131,955)	
Proceeds from subscription-based IT arrangements	(208,448)	
Repayment of principal on bonded debt	20,560,000	
Repayment of principal on notes from direct borrowings and direct placements	<u>367,433</u>	
		21,140,254
Some expenses reported in the statement of activities do not require the use of current financial resources and, therefore, are not reported as expenditures in governmental funds.		
Amortization	2,138,531	
Pension related items	(305,172)	
Other postemployment benefits related items	11,266,557	
Accrued interest	88,852	
Retirement contracts payable	11,000	
Compensated absences	(290,063)	
Arbitrage liability	<u>(1,757,050)</u>	
		11,152,655
Restricted revenue reported in the governmental funds that is deferred to offset the deferred outflows related to section 147c pension contributions subsequent to the measurement period.		
Pension related items, beginning of year		17,745,077
Pension related items, end of year		<u>(12,246,496)</u>
		5,498,581
Change in Net Position of Governmental Activities		<u>\$ 29,287,030</u>

The notes to the basic financial statements are an integral part of this statement.

Forest Hills Public Schools

Notes to Financial Statements

1. Summary of Significant Accounting Policies

The basic financial statements of Forest Hills Public Schools (the District) have been prepared in conformity with generally accepted accounting principles as applied to governmental units. The Governmental Accounting Standards Board (GASB) is the accepted standard-setting body for establishing governmental accounting and financial reporting principles. The District's significant accounting policies are described below.

Reporting Entity

The District is an independent entity with an elected Board of Education consisting of seven members. Board members serve six-year terms. The Board has responsibility and control over all matters affecting the District, including authority to levy taxes and determine its budget, the power to designate management and primary accountability for fiscal matters. The basic financial statements of the District contain all funds for which the District is financially accountable. There are no other organizations for which the nature and significance of their relationship with the District are such that exclusion would cause the District's basic financial statements to be misleading or incomplete.

Basis of Presentation

Government-wide financial statements: The statement of net position and the statement of activities report information on all of the nonfiduciary activities of the District. For the most part, the effect of interfund activity has been removed from these statements. The government-wide financial statements categorize activities as either governmental or business-type. All of the District's activities are classified as governmental.

The statement of activities demonstrates the degree to which the direct expenses of a given function or segment is offset by program revenues. Direct expenses are those that are clearly identifiable with a specific function. Program revenues include (1) charges to recipients who purchase, use, or directly benefit from goods, services or privileges provided by a given function, and (2) grants and contributions that are restricted to meeting the operation or capital requirements of a particular function. Property taxes, state aid foundation and certain other items are reported as general revenues.

Fund financial statements: The fund financial statements provide information about the District's funds. Each fund is accounted for by providing a separate set of self-balancing accounts that comprise its assets, liabilities, fund equity, revenues, and expenditures. Major individual governmental funds are reported in separate columns in the fund financial statements.

When both restricted and unrestricted resources are available, it is the District's policy to use restricted resources first.

Forest Hills Public Schools

Notes to Financial Statements

Governmental Funds

Governmental Funds are used to account for the District's general activity. The focus is on determination of the financial position and changes in financial position rather than on income determination. The following is a description of the Governmental Funds of the District:

General Fund is the general operating fund of the District. It is used to account for all financial resources except those required to be accounted for in another fund. It is considered a major fund.

Special Revenue Funds are used to account for, and report proceeds of specific revenue sources that are restricted or committed to expenditure for specified purposes other than debt service or capital projects. The District operates three special revenue funds: Food Service, Student/School Activities, and Child Care. These funds are considered nonmajor funds.

Debt Service Fund is used to account for and report financial resources that are restricted, committed or assigned to expenditure for principal and interest. The Debt Service Fund is considered a major fund and resources are mainly from property taxes.

Capital Projects Funds are used to account for and report financial resources that are restricted, committed or assigned to expenditure for capital outlays, including the acquisition or construction of capital facilities and other capital projects. Capital project fund resources are mainly from bond proceeds and investment income. The 2021 and 2023 Capital Projects Funds are considered major funds and the 2019 Capital Projects Fund is considered a nonmajor fund.

Beginning with the year of bond issuance, the school district has reported the annual construction activity in the Capital Projects Fund. The project for which the 2021 Bonds were issued was considered complete on June 30, 2024 (June 30 immediately following date of Certificate of Substantial Completion or 95% of proceeds expended). The 2023 Capital Projects Fund is not yet considered substantially complete, and a subsequent year audit is expected.

Measurement Focus and Basis of Accounting

Measurement focus refers to what is being measured, and basis of accounting refers to when revenues and expenditures are recognized in the accounts and reported in the financial statements. Basis of accounting relates to the timing of the measurements made, regardless of the measurement focus applied.

Government-wide financial statements are reported using the economic resources measurement focus and the accrual basis of accounting. Revenues are recorded when earned and expenses are recorded when a liability is incurred, regardless of the timing of related cash flows. Property taxes are recognized as revenues in the year for which they are levied. Grants and similar items are recognized as revenue as soon as all eligibility requirements imposed by the provider have been met.

Governmental fund financial statements are reported using the current financial resources measurement focus and the modified accrual basis of accounting. Revenues are recognized as soon as they are both measurable and available. Revenues are considered to be available if they are collected within the current period or soon enough after to pay liabilities for the current period. The District considers revenues available if collected within 60 days after year-end for property taxes, state aid and interest, and 90 days after year-end for entitlement funds and grants.

Forest Hills Public Schools

Notes to Financial Statements

Expenditures are recorded when a liability is incurred, as under accrual accounting. However, debt service expenditures, as well as expenditures related to compensated absences and claims and judgments, are recorded only when payment is due. General capital asset acquisitions are reported as expenditures in governmental funds.

State Foundation Revenue

The State of Michigan allocates funds through a foundation grant approach, which provides for a specific annual amount of revenue per student based on a statewide formula. The foundation is funded from state and local sources. Revenues from state sources primarily are governed by the School Aid Act and the School Code of Michigan. For the year ended June 30, 2024, the foundation allowance was based on the blended student membership counts taken in October 2023 and February 2023.

The state portion of the foundation is provided primarily by a state education property tax millage of six mills and an allocated portion of state sales and other taxes. The local portion of the foundation is funded primarily by non-homestead property taxes, which may be levied at a rate of up to 18 mills.

State Categorical Revenue

The District also receives revenue from the state to administer certain categorical education programs. State rules require that revenue earmarked for these programs be expended for its specific purpose. Categorical funds received which are not expended by the close of the fiscal year are recorded as unearned revenue.

Federal Revenue

Expenditure-driven grants are recognized as revenue when the qualifying expenditures have been incurred and all other grant requirements have been met.

Budgets and Budgetary Accounting

The budgetary data reflected in the financial statements is established by the District using the procedures outlined below:

During the January to June period, the budget development process occurs. This process includes sharing of information on District finances, soliciting input, and responding to questions with various employee and parent groups and the Board of Education.

This information is used to develop a budget and resolution for the General Fund and Special Revenue Funds. This includes proposed expenditures and the means of financing them and is compiled on the same basis of accounting used to reflect actual revenues and expenditures recognized on a generally accepted accounting principles basis.

In June, the budget resolution is subjected to a public hearing before the full Board of Education and is adopted after this hearing and before July 1, the first day of the budgeted fiscal year.

Various administrators are authorized to transfer amounts within their departmental budget. However, any revisions that alter the total expenditures of a fund, the legal level of budgetary control, must be approved by the Board of Education. Unexpended appropriations lapse at year-end. The budget is integrated with the accounting system of the District and is used as a management control device during the year.

Forest Hills Public Schools

Notes to Financial Statements

Expenditures shall not be made or incurred, unless authorized in the budget, in excess of the amount appropriated. Violations, if any, in the general fund are noted in the required supplementary information section.

The budget was amended during the year to reflect changes occurring since the original adoption. The major cause of amendments typically relates to classification of revenues and expenditures, as well as changes since the original adoption. The State of Michigan has implemented new accounting classifications in recent years which has caused some of these changes.

Cash and Cash Equivalents

The District's cash and cash equivalents are considered to be cash on hand, demand deposits, and short-term investments with original maturities of three months or less from the date of acquisition.

Investments

In accordance with Michigan Compiled Laws, the District is authorized to invest in the following investment vehicles:

- a. Bonds, securities, and other obligations of the United States or an agency or instrumentality of the United States.
- b. Certificates of deposit, savings accounts, deposit accounts, or depository receipts of a bank which is a member of the Federal Deposit Insurance Corporation (FDIC) or a savings and loan association which is a member of the Federal Savings and Loan Insurance Corporation (FSLIC) or a credit union which is insured by the National Credit Union Administration (NCUA), but only if the bank, savings and loan association, or credit union is eligible to be a depository of surplus funds belonging to the State under section 5 or 6 of Act No. 105 of the Public Acts of 1855, as amended, being Section 21.145 and 21.146 of the Michigan Compiled Laws.
- c. Commercial paper rated at the time of purchase within the three highest classifications established by not less than two standard rating services, and which matures not more than 270 days after the date of purchase.
- d. The United States government or federal agency obligations repurchase agreements.
- e. Bankers' acceptances of United States banks.
- f. Mutual funds composed of investment vehicles, which are legal for direct investment by local units of government in Michigan.

Michigan Compiled Laws allow for collateralization of government deposits, if the assets for pledging are acceptable to the State Treasurer under Section 3 of 1855 PA 105, MCL 21.143, to secure deposits of State surplus funds, securities issued by the Federal Loan Mortgage Corporation, Federal National Mortgage Association, or Government National Mortgage Association.

Forest Hills Public Schools

Notes to Financial Statements

Inventories and Prepaid Items

Inventories are stated at cost. Inventories consist primarily of food, cafeteria supplies, teaching and maintenance supplies and are valued using FIFO, except natural gas inventory which is valued using a weighted average method. Inventories are reported as assets when purchased and charged to operations when used.

Certain payments to vendors reflect costs applicable to future accounting periods and are recorded as prepaid items when purchased and charged to operations when used in both government-wide and fund financial statements.

Capital Assets

Capital assets, which include property, buildings, and equipment, are reported in the government-wide financial statements. Assets having a useful life in excess of one year, and whose costs exceed \$20,000 for buildings and improvements and \$10,000 for all other capital asset categories, are capitalized. Capital assets are stated at historical cost, or estimated historical cost where actual cost information is not available. Donated capital assets are stated at their estimated acquisition value as of the donation date.

The costs of normal maintenance and repairs that do not add to the value of the asset or materially extend assets' useful lives are not capitalized. Major outlays for capital assets are capitalized as projects are constructed. Right to use assets of the District are amortized using the straight-line method over the shorter of the subscription period or the estimated useful life. Depreciation is provided for on the straight-line basis over the estimated useful lives of the assets as follows:

	Years
Land improvements	20
Transportation equipment	8
Buildings and improvements	20 - 50
Machinery, furniture and equipment	5 - 20
Right to use - subscription based IT	2 - 6

Defined Benefit Plans

For purposes of measuring the net pension and other postemployment benefit asset, deferred outflows of resources and deferred inflows of resources related to pensions and other postemployment benefits, and pension and other postemployment benefits expense, information about the fiduciary net position of the Michigan Public Employees' Retirement System (MPERS) and additions to/deductions from MPERS fiduciary net position have been determined on the same basis as they are reported by MPERS. For this purpose, benefit payments (including refunds of employee contributions) are recognized when due and payable in accordance with the benefit terms. Investments are reported at fair value.

Forest Hills Public Schools

Notes to Financial Statements

Deferred Outflows

In addition to assets, the statement of net position will sometimes report a separate section for deferred outflows of resources. This separate financial statement element, *deferred outflows of resources*, represents a consumption of net assets that applies to a future period(s) and so will *not* be recognized as an outflow of resources (expense/expenditure) until then. The District has three items that qualify for reporting in this category. They are the deferred charge on refunding, pension, and other postemployment benefit related items reported in the government-wide statement of net position. A deferred charge on refunding results from the difference in the carrying value of refunded debt and its reacquisition price. This amount is deferred and amortized over the shorter of the life of the refunded or refunding debt. A deferred outflow is recognized for pension and other postemployment benefit related items. These amounts are expensed in the plan year in which they apply.

Deferred Inflows

In addition to liabilities, the statement of net position will sometimes report a separate section for deferred inflows of resources. This separate financial statement element, *deferred inflows of resources*, represents an acquisition of net assets that applies to a future period(s) and so will *not* be recognized as an inflow of resources (revenue) until that time. The District has three items that qualify for reporting in this category. The first is restricted section 147c state aid deferred to offset deferred outflows related to section 147c pension benefit contributions subsequent to the measurement period. The second and third items are future resources yet to be recognized in relation to the pension and other postemployment benefit actuarial calculation. These future resources arise from differences in the estimates used by the actuary to calculate the pension and other postemployment benefit liability and the actual results. The amounts are amortized over a period determined by the actuary.

Compensated Absences

District employees are granted vacation and sick leave in varying amounts based on length of service. Sick leave is accumulated at different rates for various categories of employees. Unused sick leave accumulates from year to year to a maximum, which varies for different categories of employees. Unused sick leave is paid to employees at a contractual rate for each unused sick day either at the time of retirement or upon termination, depending upon the category of the employee. The liability for compensated absences includes salary-related payments. In the fund financial statements, only the matured liability for compensated absences is reported. The total liability is reported in the government-wide financial statements.

Long-Term Obligations

In the government-wide financial statements, long-term debt and other long-term obligations are reported as liabilities. Premiums and discounts on bonds issued are deferred and amortized over the life of the related bonds. Bond issuance costs are expensed.

In the fund financial statements, the face amount of new debt issued is reported as other financing sources. Bond premiums and discounts are reported as other financing sources (uses) while issuance costs are reported as expenditures.

Forest Hills Public Schools

Notes to Financial Statements

Net Position

Net position represents the difference between assets, deferred outflows of resources, liabilities, and deferred inflows of resources. Net position invested in capital assets consists of capital assets, net of accumulated depreciation, reduced by the outstanding balances of any borrowings and premiums used for the acquisition or construction of those assets. Deferred outflows of resources and restricted capital projects net position that are attributable to the acquisition, construction, or improvement of those assets or related debt are included in this component of net position. Net position is reported as restricted when there are limitations imposed on its use, either through legislation or through external restrictions imposed by creditors, grantors, laws, or regulations from other governments.

Fund Balance

Fund balance represents the difference between assets and liabilities in the governmental fund financial statements. The District's fund balance is classified in the following categories:

Nonspendable fund balance - represents amounts that cannot be spent due to legal requirements or because it is not in spendable form. The District reports nonspendable fund balance for inventories, prepaid expenditures, and deposits.

Restricted fund balance - restricted for specific purposes imposed by grantors, bondholders, constitutional provisions or enabling legislation. The District reports restricted fund balance in the Debt Fund, Capital Projects Fund and Food Service Fund.

Committed fund balance - represent amounts that can only be used for specific purposes pursuant to constraints imposed by formal action of the District's board of education. The District reports committed fund balance in the Student/School Activities and Child Care Funds.

Assigned fund balance - intended to be used for specific purposes but doesn't meet the criteria for restricted or committed fund balance. The District reports assigned fund balance in the General Fund to report specific projects and subsequent year budgeted use of fund balance. The Board of Education has authority to assign amounts to a specific purpose by authority of a Board resolution passed in June 2011.

Unassigned fund balance - the residual fund balance of the General Fund.

When the District incurs an expenditure for purposes for which various fund balance classifications can be used, it is the District's policy to use restricted fund balance first, then committed fund balance, assigned fund balance and then unassigned fund balance.

The District has a policy that funds equal to 10% of the adopted General Fund budget shall be maintained for the purposes of protecting the cash flow position of the District and avoiding the need to borrow against either anticipated state aid payments or local property tax revenues for school operating purposes.

Subscription-based IT Arrangements (SBITA)

The District is a lessee for a noncancelable subscription of an IT arrangement. The District recognizes a SBITA liability and an intangible right-to-use SBITA asset in the government-wide financial statements.

Forest Hills Public Schools

Notes to Financial Statements

At the commencement of a subscription, the District initially measures the SBITA liability at the present value of payments expected to be made during the SBITA term. Subsequently, the SBITA liability is reduced by the principal portion of SBITA payments made. The SBITA asset is initially measured as the initial amount of the SBITA liability, adjusted for SBITA payments made at or before the SBITA commencement date, plus certain initial direct costs. Subsequently, the SBITA asset is amortized on a straight-line basis over its useful life.

Key estimates and judgements related to SBITAs included how the District determines (1) the discount rate it uses to discount the expected SBITA payments to present value, (2) SBITA term, and (3) SBITA payments.

- The District uses the interest rate charged by the lessor as the discount rate. When the interest rate charged by the lessor is not provided, the District generally uses its estimated incremental borrowing rate as the discount rate for SBITA.
- The SBITA term includes the noncancelable period of the subscription. SBITA payments included in the measurement of the SBITA liability are composed of fixed payments and purchase option price that the District is reasonably certain to exercise.

The District monitors changes in circumstances that would require a remeasurement of its SBITA and will remeasure the SBITA asset and liability if certain changes occur that are expected to significantly affect the amount of the SBITA liability.

SBITA assets are reported with other capital assets and SBITA liabilities are reported with long-term obligations on the statement of net position.

Property Taxes

School District property taxes are due July 1 of each fiscal year in the City of Grand Rapids, on December 1 of each fiscal year in Cannon Township, and on July 1 and December 1 of each fiscal year in the City of Kentwood and the remaining townships. The taxes are payable without interest on or before July 31 in the City of Grand Rapids, February 14 in Cannon Township and September 1 and February 14 in the City of Kentwood, and September 14 and February 14 in the remaining townships, and without penalty on or before the following February 14. All real property taxes remaining unpaid on March 1 of the year following the levy are turned over to the County Treasurer for collection.

For the year ended June 30, 2024, the District levied the following amounts per \$1,000 of assessed valuation. The general fund levied 17.6614 mills for applicable property and a supplemental 0.9815 mill for parks and recreation activities. The debt service fund levied 6.05 mills.

Interfund Activity

During the course of its operations the District has transactions between funds. The General Fund regularly has transfers of funds between the Food Service and Child Care funds. During the year, the Food Service Fund and Child Care Fund transferred \$230,000 and \$150,000, respectively, to the General Fund for indirect costs. The General Fund transferred \$13 to the Food Service Fund for at-risk meals. To the extent that certain transactions had not been paid or received as of year-end, balances of interfund receivables or payables are recorded. Balances are normally liquidated in the subsequent fiscal year.

Forest Hills Public Schools

Notes to Financial Statements

Use of Estimates

The preparation of financial statements requires estimates and assumptions that affect the amounts reported in the financial statements and accompanying notes. Actual results may differ from those estimates.

Subsequent Events

Management has evaluated subsequent events through October 9, 2024 the date the financial statements were available to be issued. Based on that evaluation, there were no matters identified that had a significant impact on the financial statements as presented.

2. Cash and Investments

Deposits

Custodial Credit Risk Related to Deposits

Custodial credit risk is the risk that, in the event of a bank failure, the District's deposits might not be recovered. The District minimizes custodial credit risk by pre-qualifying financial institutions. At June 30, 2024, \$750,000 of the District's bank balances (without recognition of deposits in transit and outstanding checks) of \$32,120,293 was insured and \$31,370,293 was uninsured and uncollateralized. The Federal Deposit Insurance Corporation (FDIC) general deposit insurance rules provide \$250,000 of insurance for all time and savings deposits and \$250,000 of insurance for all demand deposits per institution.

Investments

At June 30, 2024, the District had the following investments:

<i>Investment Type</i>	<i>Rating</i>	<i>Fair Value</i>	<u><i>Maturity</i></u> <i>Less Than</i> <i>1 Year</i>
MILAF External Investment Pool - CMC	S&P AAAM	\$ 3,620,598	\$ 3,620,598
MILAF External Investment Pool - Max	S&P AAAM	37,453,171	37,453,171
Total investments		41,073,769	<u>\$ 41,073,769</u>
Cash		<u>30,569,429</u>	
Total Investments and Cash		\$ 71,643,198	

Forest Hills Public Schools

Notes to Financial Statements

The District voluntarily invests certain excess funds in external pooled investment funds which includes money market funds. Two of the pooled investment funds utilized by the District is the Michigan Investment Liquid Asset Fund Cash Management Class and Max Class (MILAF). These are external pooled investment funds of “qualified” investments for Michigan school districts. MILAF is not regulated nor is it registered with the SEC. MILAF reports as of June 30, 2024, the fair value of the District’s investments is the same as the value of the pool shares. MILAF Cash Management Class and Max Class funds are considered external investment pools as defined by the GASB and as such are recorded at amortized cost which approximate fair value. The MILAF (MAX Class) fund requires notification of redemptions prior to 14 days to avoid penalties. These funds are not subject to the fair value disclosures and are valued at amortized cost.

Interest Rate Risk

In accordance with its investment policy, the District will minimize interest rate risk, which is the risk that the market value of securities in the portfolio will fall due to changes in market interest rates, by; structuring the investment portfolio so that securities mature to meet cash requirements for ongoing operations, thereby avoiding the need to sell securities in the open market; and, investing operating funds primarily in shorter-term securities, liquid asset funds, money market mutual funds, or similar investment pools and limiting the average maturity in accordance with the District’s cash requirements.

Custodial Credit Risk Related to Investments

For an investment, this is the risk that, in the event of the failure of the counterparty, the District will not be able to recover the value of its investments or collateral securities that are in the possession of an outside party. The District will minimize custodial credit risk, which is the risk of loss due to the failure of the security issuer or backer, by; limiting investments to the types of securities allowed by law; and pre-qualifying the financial institutions, broker/dealers, intermediaries, and advisors with which the District will do business. The District had no investments subject to custodial credit risk at June 30, 2024.

Fair Value Measurement

The District is required to disclose amounts within a framework established for measuring fair value. That framework provides a fair value hierarchy that prioritizes the inputs to valuation techniques used to measure fair value. The hierarchy gives the highest priority to unadjusted quoted prices in active markets for identical assets or liabilities (Level 1 measurements) and the lowest priority to unobservable inputs (Level 3 measurements). The three levels of the fair value hierarchy are described as follows:

- Level 1: Quoted prices in active markets for identical securities.
- Level 2: Prices determined using other significant observable inputs. Observable inputs are inputs that other market participants may use in pricing a security. These may include prices for similar securities, interest rates, prepayment speeds, credit risk and others.
- Level 3: Prices determined using significant unobservable inputs. In situations where quoted prices or observable inputs are unavailable or deemed less relevant, unobservable inputs may be used. Unobservable inputs reflect the District’s own assumptions about the factors market participants would use in pricing an investment and would be based on the best information available.

Forest Hills Public Schools

Notes to Financial Statements

The asset or liability's fair value measurement level within the fair value hierarchy is based on the lowest level of any input that is significant to the fair value measurement. Valuation techniques used need to maximize the use of observable inputs and minimize the use of unobservable inputs.

The District does not have any investments subject to the fair value measurement.

Foreign Currency Risk

The District is not authorized to participate in investments which have this type of risk.

Credit Risk

Credit risk is the risk that an issuer or other counterparty to an investment will not fulfill its obligations.

State statutes authorize the District to invest in obligations and certain repurchase agreements of the U.S. Treasury and related governmental agencies, commercial paper rated prime at the time of purchase and maturing not more than 270 days from the date of purchase, banker's acceptances and certificates of deposit issued or created by any state or national bank insured with the applicable federal agency, and investment pools authorized by the Surplus Funds Investment Pool Act.

The District follows state statutes and has no investment policy that would further limit its investment choices.

Concentration of Credit Risk

Concentration of credit risk is the risk of loss attributed to the magnitude of the District's investment in a single issuer. The District will minimize concentration of credit risk by diversifying the investment portfolio so that the impact of potential losses from any one type of security or issuer will be minimized. Obligations of the U.S. government or obligations explicitly guaranteed by the U.S. government are not considered to have credit risk and do not require disclosure of credit quality.

3. Interfund Activity

Transfers between funds during the year June 30, 2024 were as follows:

<i>Fund</i>	Transfers In	Transfers Out
General Fund	\$ 380,000	\$ 13
Nonmajor Governmental Funds	13	380,000
	<u>\$ 380,013</u>	<u>\$ 380,013</u>

Forest Hills Public Schools

Notes to Financial Statements

4. Intergovernmental Receivable

Intergovernmental receivables consist of the following:

<i>Fund</i>	Local	State	Federal	Total
General	\$ 256,719	\$ 17,046,623	\$ 1,425,625	\$ 18,728,967
Food Service		22,070		22,070
Child Care		968		968
Total	\$ 256,719	\$ 17,069,661	\$ 1,425,625	\$ 18,752,005

All balances are expected to be collected within one year.

5. Capital Assets

The following summarizes capital asset activity for the year ended June 30, 2024.

	Balance, June 30, 2023	Additions	Deletions	Balance, June 30, 2024
Governmental Activities				
Capital assets not depreciated/amortized				
Land	\$ 7,696,373			\$ 7,696,373
Construction in progress	50,378,103	\$ 19,978,580	\$ (35,226,687)	35,129,996
Total capital assets not depreciated/amortized	58,074,476	19,978,580	(35,226,687)	42,826,369
Capital assets being depreciated/amortized				
Land improvements	20,291,656	994,290		21,285,946
Buildings and improvements	319,318,556	37,242,825		356,561,381
Machinery, furniture and equipment	65,945,218	3,774,018		69,719,236
Transportation equipment	8,144,690	1,158,379	(2,017,011)	7,286,058
Right to use - subscription-based IT	1,015,214	586,707		1,601,921
Total capital assets being depreciated/amortized	414,715,334	43,756,219	(2,017,011)	456,454,542
Totals at historical cost	472,789,810	63,734,799	(37,243,698)	499,280,911
Less accumulated depreciation/amortization for				
Land improvements	8,990,446	1,202,866		10,193,312
Buildings and improvements	169,141,941	9,052,327		178,194,268
Machinery, furniture and equipment	48,179,799	5,277,106		53,456,905
Transportation equipment	5,685,559	1,096,216	(2,017,011)	4,764,764
Right to use - subscription-based IT	328,504	447,858		776,362
Total accumulated depreciation/amortization	232,326,249	17,076,373	(2,017,011)	247,385,611
Net Capital Assets	\$ 240,463,561	\$ 46,658,426	\$ (35,226,687)	\$ 251,895,300

Depreciation/amortization for the year ended June 30, 2024 was \$17,076,373. The District determined that it was impractical to allocate depreciation/amortization to various governmental activities as the assets serve multiple functions.

Costs to complete the construction in progress are approximately \$35,203,500.

Forest Hills Public Schools

Notes to Financial Statements

6. Long-Term Obligations

The following is a summary of changes in long-term obligations for the District for the year ended June 30, 2024.

	Balance, June 30, 2023	Additions	Deductions	Balance, June 30, 2024	Due Within One Year
General obligation bonds	\$ 137,180,000	\$ 9,500,000	\$ (30,610,000)	\$ 116,070,000	\$ 23,945,000
Deferred issuance premium	19,324,938	131,955	(2,700,411)	16,756,482	
Notes from direct borrowings and direct placements	416,614	208,448	(367,433)	257,629	188,202
Compensated absences	1,866,074	1,287,386	(997,323)	2,156,137	913,000
Retirement contracts payable	33,000		(11,000)	22,000	11,000
Net pension liability	243,246,630		(37,087,647)	206,158,983	
Net other postemployment benefits liability (asset)	13,840,268		(17,354,149)	(3,513,881)	
	\$ 415,907,524	\$ 11,127,789	\$ (89,127,963)	\$ 337,907,350	\$ 25,057,202

General obligation bonds at June 30, 2024 are comprised of the following individual issues:

<i>June 30, 2024</i>	Principal Outstanding	Remaining Interest Requirements
2014 Building and Site Bonds, \$25,000,000 due in annual installments of \$2,300,000 through May 1, 2025, interest at 5.00%.	\$ 2,300,000	\$ 69,000
2016 Building, Site and Refunding Bonds, \$48,130,000, due in annual installments of \$5,045,000 to \$5,230,000 through May 1, 2027, interest at 5.00%.	15,450,000	1,554,250
2019 Building and Site Series I Bonds, \$31,950,000, due in annual installments of \$2,150,000 to \$2,700,000 through May 1, 2034, interest at 5.00%.	23,900,000	6,810,000
2020 Refunding Bonds, \$9,670,000 due in annual installments of \$1,050,000 to \$1,075,000 through May 1, 2029, interest at 4.00%.	5,300,000	639,000
2021 Building and Site Bonds, \$55,350,000 due in annual installments of \$2,800,000 to \$2,845,000 through May 1, 2036, interest at 3.00% to 4.00%.	34,070,000	7,448,100
2023 Building and Site Bonds, \$25,550,000 due in annual installments of \$1,100,000 to \$2,480,000 through May 1, 2038, interest at 5.00%.	25,550,000	10,664,500
2024 Refunding Bonds, \$9,500,000 due in annual installments of \$9,500,000 through May 1, 2025, interest at 5.00%.	9,500,000	410,347
	\$ 116,070,000	\$ 27,595,197

Forest Hills Public Schools

Notes to Financial Statements

Notes from direct borrowings and direct placements at June 30, 2024 are comprised of the following:

Direct Borrowing and Direct Placement

<i>June 30, 2024</i>	Principal Outstanding	Remaining Interest Requirements
Various subscription-based IT arrangements, due in annual installments of \$69,427 to \$188,202 through July 31, 2025, including imputed interest at 5%.	\$ 257,629	\$ 16,352

Severance Program

A severance program is available for administrative staff to receive \$11,000 per year for three years after retirement, and the liability at year-end was \$22,000. Retirement contracts and compensated absences typically are liquidated by the General Fund.

Debt Service Requirements

The District's outstanding notes from direct borrowings and direct placements related to governmental activities of \$257,629 contains provisions that in an event of default, either by (1) unable to make principal or interest payments (2) false or misrepresentation is made to the lender (3) become insolvent or make an assignment for the benefit of its creditors (4) if the lender at any time in good faith believes that the prospect of payment of any indebtedness is impaired. Upon the occurrence of any default event, the outstanding amounts, including accrued interest become immediately due and payable.

On June 20, 2024, the District issued a general obligation bond of \$9,500,000 with an interest rate of 5% to advance refund the 2026 through 2029 bond payments of the 2014 Building and Site Bonds. The bonds mature at various times through May 1, 2029. The general obligation bond was issued at par value. After paying issuance costs of \$129,954 and receiving a premium of \$131,955 the net proceeds were \$9,502,001. The net proceeds from the issuance of the general obligation bonds, and a District payment of \$552,000, were used to purchase U.S. government securities and those securities were deposited in an irrevocable trust with an escrow agent to provide debt service payments until the bonds are paid in full. The advance refunding met the requirements of an in substance debt defeasance and the term bonds were removed from the District's government-wide financial statements. As a result of the advance refunding, the District reduced its total debt service requirements by \$1,442,903, creating an economic gain (difference between the present value of the debt service payment on the old and new debt) of \$560,585.

The District defeased certain general obligations bonds by placing the proceeds of new bonds in an irrevocable trust to provide for all future debt service payments on the old bonds. Accordingly, the trust account, assets, and liabilities for the defeased bonds are not included in the District's financial statements. At June 30, 2024, \$31,450,000 of bonds outstanding are considered defeased.

Forest Hills Public Schools

Notes to Financial Statements

The annual requirements to amortize long-term obligations outstanding exclusive of compensated absences payments as of June 30, 2024, are as follows:

<i>Year Ending June 30,</i>	General Obligation Bonds		Direct Borrowing and Direct Placement		Other Long-term Obligations	Total
	Principal	Interest	Principal	Interest		
2025	\$ 23,945,000	\$ 5,156,897	\$ 188,202	\$ 12,881		\$ 29,302,980
2026	12,645,000	4,108,800	69,427	3,471		16,826,698
2027	12,820,000	3,515,450				16,335,450
2028	7,735,000	2,913,350				10,648,350
2029	7,865,000	2,565,750				10,430,750
2030-2034	36,140,000	7,896,900				44,036,900
2035-2038	14,920,000	1,438,050				16,358,050
	116,070,000	27,595,197	257,629	16,352		143,939,178
Deferred issuance premium	16,756,482					16,756,482
Compensated absences					\$ 2,156,137	2,156,137
Retirement contracts payable					22,000	22,000
Net pension liability					206,158,983	206,158,983
Net other postemployment benefits asset					(3,513,881)	(3,513,881)
	\$ 132,826,482	\$ 27,595,197	\$ 257,629	\$ 16,352	\$ 204,823,239	\$ 365,518,899

The net pension liability and net other postemployment benefits asset are liquidated by the General, Food Service, and Child Care funds.

7. Interfund Receivables and Payables

<i>Fund</i>	Interfund Receivable	Interfund Payable
General Fund	\$ 330,128	
Debt Service Fund		\$ 328,236
Nonmajor Governmental Funds		1,892
	\$ 330,128	\$ 330,128

The outstanding balances between funds results mainly from the time lag between the dates that (1) interfund goods and services are provided or reimbursable expenditures occur, (2) transactions are recorded in the accounting system, and (3) payments between funds are made. All amounts are expected to be repaid within the year.

Forest Hills Public Schools

Notes to Financial Statements

8. Pension and Other Postemployment Benefits

Plan Description

The Michigan Public School Employees' Retirement System (MPSERS) (System) is a cost-sharing, multiple employer, state-wide, defined benefit public employee retirement plan governed by the State of Michigan (State) originally created under Public Act 136 of 1945, recodified and currently operating under the provisions of Public Act 300 of 1980, as amended. Section 25 of this act establishes the Board's authority to promulgate or amend the provisions of the System. MPSERS issues a publicly available Annual Comprehensive Financial Report that can be obtained at www.michigan.gov/orsschools.

The System's pension plan was established by the State to provide retirement, survivor, and disability benefits to public school employees. In addition, the System's health plan provides all retirees with the option of receiving health, prescription drug, dental and vision coverage under the Michigan Public School Employees' Retirement Act.

The System is administered by the Office of Retirement Services (ORS) within the Michigan Department of Technology, Management & Budget. The Department Director appoints the Office Director, with whom the general oversight of the System resides. The State of Michigan Investment Board serves as the investment fiduciary and custodian for the System.

Benefits Provided - Overall

Participants are enrolled in one of multiple plans based on date of hire and certain voluntary elections. A summary of the plans offered by MPSERS is as follows:

<u>Plan Name</u>	<u>Plan Type</u>	<u>Plan Status</u>
Basic	Defined Benefit	Closed
Member Investment Plan (MIP)	Defined Benefit	Closed
Pension Plus	Hybrid	Closed
Pension Plus 2	Hybrid	Open
Defined Contribution	Defined Contribution	Open

Benefits Provided - Pension

Benefit provisions of the defined benefit pension plan are established by State statute, which may be amended. Public Act 300 of 1980, as amended, establishes eligibility and benefit provisions for the Defined Benefit (DB) pension plan. Retirement benefits for DB plan members are determined by final average compensation and years of service. DB members are eligible to receive a monthly benefit when they meet certain age and service requirements. The System also provides disability and survivor benefits to DB plan members.

Prior to Pension reform of 2010 there were two plans commonly referred to as Basic and the Member Investment Plan (MIP). Basic Plan member's contributions range from 0% - 4%. On January 1, 1987, the Member Investment Plan (MIP) was enacted. MIP members enrolled prior to January 1, 1990, contribute at a permanently fixed rate of 3.9% of gross wages. Members first hired January 1, 1990, or later including Pension Plus Plan members, contribute at various graduated permanently fixed contribution rates from 3.0% - 7.0%.

Forest Hills Public Schools

Notes to Financial Statements

Pension Reform 2010

On May 19, 2010, the Governor signed Public Act 75 of 2010 into law. As a result, any member of the Michigan Public School Employees' Retirement System (MPERS) who became a member of MPERS after June 30, 2010, is a Pension Plus member. Pension Plus is a hybrid plan that contains a pension component with an employee contribution (graded, up to 6.4% of salary) and a flexible and transferable defined contribution (DC) tax-deferred investment account that earns an employer match of 50% (up to 1% of salary) on employee contributions. Retirement benefits for Pension Plus members are determined by final average compensation and years of service. Disability and survivor benefits are available to Pension Plus members.

Pension Reform 2012

On September 4, 2012, the Governor signed Public Act 300 of 2012 into law. The legislation grants all active members who first became a member before July 1, 2010, and who earned service credit in the 12 months ending September 3, 2012, or were on an approved professional services or military leave of absence on September 3, 2012, a voluntary election regarding their pension. Any changes to a member's pension are effective as of the member's *transition date*, which is defined as the first day of the pay period that begins on or after February 1, 2013.

Under the reform, members voluntarily chose to increase, maintain, or stop their contributions to the pension fund.

An amount determined by the member's election of Option 1, 2, 3, or 4 described below:

Option 1 - Members voluntarily elected to increase their contributions to the pension fund as noted below and retain the 1.5% pension factor in their pension formula. The increased contribution would begin as of their transition date and continue until the termination of public school employment.

- Basic Plan Members: 4% contribution
- Member Investment Plan (MIP)-Fixed, MIP-Graded, and MIP-Plus members: a flat 7% contribution

Option 2 - Members voluntarily elected to increase their contribution to the pension fund as stated in Option 1 and retain the 1.5% pension factor in their pension formula. The increased contribution would begin as of their transition date and continue until they reach 30 years of service. If and when they reach 30 years of service, their contribution rates will return to the previous level in place as of the day before their transition date (0% for Basic plan members, 3.9% for MIP-Fixed, up to 4.3% for MIP-Graded, or up to 6.4% for MIP-Plus). The pension formula for any service thereafter would include a 1.25% pension factor.

Option 3 - Members voluntarily elected not to increase their contribution to the pension fund and maintain their current level of contribution to the pension fund. The pension formula for their years of service as of the day before their transition date will include a 1.5% pension factor. The pension formula for any service thereafter will include a 1.25% pension factor.

Forest Hills Public Schools

Notes to Financial Statements

Option 4 - Members voluntarily elected to no longer contribute to the pension fund and therefore are switched to the Defined Contribution plan for future service as of their transition date. As a DC participant they receive a 4% employer contribution to the tax-deferred 401(k) account and can choose to contribute up to the maximum amounts permitted by the IRS to a 457 account. They vest in employer contributions and related earnings in their 401(k)-account based on the following schedule: 50% at 2 years, 75% at 3 years, and 100% at 4 years of service. They are 100% vested in any personal contributions and related earnings in their 457 account. Upon retirement, if they meet age and service requirements (including their total years of service), they would also receive a pension (calculated based on years of service and final average compensation as of the day before their transition date and a 1.5% pension factor).

Members who did not make an election before the deadline defaulted to Option 3 as described above. Deferred or nonvested public school employees on September 3, 2012, who return to public school employment on or after September 4, 2012, will be considered as if they had elected Option 3 above. Returning members who made the retirement plan election will retain whichever option they chose.

Employees who first work on or after September 4, 2012, choose between two retirement plans: The Pension Plus Plan and a Defined Contribution that provides a 50% employer match up to 3% of salary on employee contributions.

Final Average Compensation (FAC) - Average of highest 60 consecutive months for Basic Plan members and Pension Plus members (36 months for MIP members). FAC is calculated as of the last day worked unless the member elected Option 4, in which case the FAC is calculated at the transition date.

Pension Reform of 2017

On July 13, 2017, the Governor signed Public Act 92 of 2017 into law. The legislation closed the Pension Plus Plan to newly hired employees as of February 1, 2018, and created a new, optional Pension Plus 2 Plan with similar plan benefit calculations but containing a 50/50 cost share between the employee and the employer, including the cost of future unfunded liabilities. The assumed rate of return on the Pension Plus 2 Plan is 6%. Further, under certain adverse actuarial conditions, the Pension Plus 2 Plan will close to new employees if the actuarial funded ratio falls below 85% for two consecutive years. The law included other provisions to the retirement eligibility age, plan assumptions, and unfunded liability payment methods.

Benefits Provided - Other Postemployment Benefit (OPEB)

Benefit provisions of the postemployment healthcare plan are established by State statute, which may be amended. Public Act 300 of 1980, as amended, establishes eligibility and benefit provisions. Retirees have the option of health coverage, which, through 2012, was funded on a cash disbursement basis. Beginning fiscal year 2013, it is funded on a prefunded basis. The System has contracted to provide the comprehensive group medical, prescription drug, dental and vision coverage for retirees and beneficiaries. A subsidized portion of the premium is paid by the System with the balance deducted from the monthly pension of each retiree health care recipient. For members who first worked before July 1, 2008, (Basic, MIP-Fixed, and MIP-Graded plan members), the subsidy is the maximum allowed by statute. To limit future liabilities of Other Postemployment Benefits, members who first worked on or after July 1, 2008, (MIP-Plus plan members), have a graded premium subsidy based on career length where they accrue credit towards their insurance premiums in retirement, not to exceed the maximum allowable by statute. Public Act 300 of 2012 sets the maximum subsidy at 80% beginning January 1, 2013; 90% for those Medicare eligible and enrolled in the insurances as of that date.

Forest Hills Public Schools

Notes to Financial Statements

Retiree Healthcare Reform of 2012

Public Act 300 of 2012 granted all active members of the Michigan Public School Employees' Retirement System, who earned service credit in the 12 months ending September 3, 2012, or were on an approved professional services or military leave of absence on September 3, 2012, a voluntary election regarding their retirement healthcare. Any changes to a member's healthcare benefit are effective as of the member's *transition date*, which is defined as the first day of the pay period that begins on or after February 1, 2013.

Under Public Act 300 of 2012, members were given the choice between continuing the 3% contribution to retiree healthcare and keeping the premium subsidy benefit described above or choosing not to pay the 3% contribution and instead opting out of the subsidy benefit and becoming a participant in the Personal Healthcare Fund (PHF), a portable, tax-deferred fund that can be used to pay healthcare expenses in retirement. Participants in the PHF are automatically enrolled in a 2% employee contribution into their 457 account as of their transition date, earning them a 2% employer match into a 401(k) account. Members who selected this option stop paying the 3% contribution to retiree healthcare as of the day before their transition date, and their prior contributions will be deposited into their 401(k) accounts.

Regular Retirement (no reduction factor for age)

Eligibility - A Basic plan member may retire at age 55 with 30 years credited service; or age 60 with 10 years credited service. For Member Investment Plan (MIP) members, age 46 with 30 years credited service; or age 60 with 10 years credited service; or age 60 with 5 years of credited service provided member worked through 60th birthday and has credited service in each of the last 5 years. For Pension Plus Plan (PPP) members, age 60 with 10 years of credited service.

Annual Amount - The annual pension is paid monthly for the lifetime of a retiree. The calculation of a member's pension is determined by their pension election under PA 300 of 2012.

Member Contributions

Depending on the plan selected, member contributions range from 0% - 7% for pension and 0% - 3% for other postemployment benefits. Plan members electing the Defined Contribution plan are not required to make additional contributions.

Employer Contributions

Employers are required by Public Act 300 of 1980, as amended, to contribute amounts necessary to finance the coverage of pension benefits and OPEB. Contribution provisions are specified by State statute and may be amended only by action of the State Legislature.

Employer contributions to the System are determined on an actuarial basis using the entry age normal actuarial cost method. Under this method, the actuarial present value of the projected benefits of each individual included in the actuarial valuation is allocated on a level basis over the service of the individual between entry age and assumed exit age. The normal cost is the annual cost assigned under the actuarial funding method, to the current and subsequent plan years. The remainder is called the actuarial accrued liability. Normal cost is funded on a current basis.

Forest Hills Public Schools

Notes to Financial Statements

Pension and OPEB contributions made in the fiscal year ending September 30, 2023 were determined as of the September 30, 2020 actuarial valuations. The pension and OPEB benefits, the unfunded (overfunded) actuarial accrued liabilities as of September 30, 2020 are amortized over an 16-year period beginning October 1, 2022 and ending September 30, 2038.

School districts' contributions are determined based on employee elections. There are several different benefit options included in the plan available to employees based on date of hire. Contribution rates are adjusted annually by the ORS. The range of rates is as follows:

	Pension	Other Postemployment Benefit
October 1, 2022 - September 30, 2023	13.75% - 20.16%	7.21% - 8.07%
October 1, 2023 - September 30, 2024	13.90% - 23.03%	7.06% - 8.31%

The District's pension contributions for the year ended June 30, 2024 were equal to the required contribution total. Total pension contributions were approximately \$25,912,000. Of the total pension contributions approximately \$25,109,000 was contributed to fund the Defined Benefit Plan and approximately \$803,000 was contributed to the Defined Contribution Plan.

The District's OPEB contributions for the year ended June 30, 2024 were equal to the required contribution total. Total OPEB benefits were approximately \$5,735,000. Of the total OPEB contributions approximately \$5,299,000 was contributed to fund the Defined Benefit Plan and approximately \$436,000 was contributed to fund the Defined Contribution Plan.

These amounts, for both pension and OPEB benefit, include contributions funded from State Revenue Section 147c restricted to fund the MPSERS Unfunded Actuarial Accrued Liability (UAAL) Stabilization Rate (100% for pension and 0% for OPEB).

Pension Liabilities, Pension Expense, and Deferred Outflows of Resources and Deferred Inflows of Resources Related to Pensions

Pension Liabilities

The net pension liability was measured as of September 30, 2023, and the total pension liability used to calculate the net pension liability was determined by an actuarial valuation date of September 30, 2022 and rolled-forward using generally accepted actuarial procedures. The District's proportion of the net pension liability was based on a projection of its long-term share of contributions to the pension plan relative to the projected contributions of all participating reporting units, actuarially determined.

<u>MPSERS (Plan) Non-university Employers:</u>	September 30, 2023	September 30, 2022
Total pension liability	\$ 94,947,828,557	\$ 95,876,795,620
Plan fiduciary net position	\$ 62,581,762,238	\$ 58,268,076,344
Net pension liability	\$ 32,366,066,319	\$ 37,608,719,276
Proportionate share	0.63696%	0.64678%
Net pension liability for the District	\$ 206,158,983	\$ 243,246,630

Forest Hills Public Schools

Notes to Financial Statements

Pension Expense and Deferred Outflows of Resources and Deferred Inflows of Resources Related to Pensions

For the year ended June 30, 2024, the District recognized pension expense of approximately \$25,516,939.

At June 30, 2024, the Reporting Unit reported deferred outflows of resources and deferred inflows of resources related to pensions from the following sources:

	Deferred Outflows of Resources	Deferred Inflows of Resources
Changes of assumptions	\$ 27,935,480	\$ 16,106,963
Net difference between projected and actual plan investment earnings		4,218,680
Changes in proportion and differences between employer contributions and proportionate share of contributions	3,346,989	2,703,266
Differences between expected and actual experience	6,507,810	315,803
Reporting Unit's contributions subsequent to the measurement date	23,369,756	
	\$ 61,160,035	\$ 23,344,712

\$23,369,756, reported as deferred outflows of resources related to pensions resulting from District employer contributions subsequent to the measurement date, will be recognized as a reduction of the net pension liability in the subsequent fiscal year.

Other amounts reported as deferred outflows of resources and (deferred inflows) of resources related to pensions will be recognized in pension expense as follows:

Year Ending September 30,		Amount
2024	\$	4,935,084
2025		3,904,029
2026		8,890,334
2027		(3,283,880)

Forest Hills Public Schools

Notes to Financial Statements

OPEB Liabilities (Asset), OPEB Expense, and Deferred Outflows of Resources and Deferred Inflows of Resources Related to OPEB

OPEB Liabilities (Asset)

The net OPEB liability (asset) was measured as of September 30, 2023, and the total OPEB liability used to calculate the net OPEB liability (asset) was determined by an actuarial valuation date of September 30, 2022 and rolled-forward using generally accepted actuarial procedures. The District's proportion of the net OPEB liability (asset) was based on a projection of its long-term share of contributions to the OPEB plan relative to the projected contributions of all participating reporting units, actuarially determined.

<i>MPERS (Plan) Non-university Employers:</i>	September 30, 2023	September 30, 2022
Total other postemployment benefits liability	\$ 11,223,648,949	\$ 12,522,713,324
Plan fiduciary net position	\$ 11,789,347,341	\$ 10,404,650,683
Net other postemployment benefits liability (asset)	\$ (565,698,392)	\$ 2,118,062,641
Proportionate share	0.62116%	0.65344%
Net other postemployment benefits liability (asset) for the District	\$ (3,513,881)	\$ 13,840,268

OPEB Expense and Deferred Outflows of Resources and Deferred Inflows of Resources Related to OPEB

For the year ended June 30, 2024, the District recognized OPEB benefit of approximately \$6,069,728.

At June 30, 2024, the Reporting Unit reported deferred outflows of resources and deferred inflows of resources related to OPEB from the following sources:

	Deferred Outflows of Resources	Deferred Inflows of Resources
Changes of assumptions	\$ 7,822,513	\$ 941,979
Net difference between projected and actual plan investment earnings	10,714	
Changes in proportion and differences between employer contributions and proportionate share of contributions	1,291,903	1,606,578
Differences between expected and actual experience		26,552,692
Reporting Unit's contributions subsequent to the measurement date	4,633,683	
	\$ 13,758,813	\$ 29,101,249

\$4,633,683, reported as deferred outflows of resources related to OPEB resulting from District employer contributions subsequent to the measurement date, will be recognized as a reduction of the net OPEB liability (asset) in the subsequent fiscal year.

Forest Hills Public Schools

Notes to Financial Statements

Other amounts reported as deferred outflows of resources and (deferred inflows) of resources related to OPEB will be recognized in OPEB expense as follows:

Year Ending September 30,	Amount
2024	\$ (6,536,787)
2025	(6,043,805)
2026	(2,245,140)
2027	(2,238,092)
2028	(1,911,489)
2029	(1,000,806)

Actuarial Assumptions

Investment Rate of Return for Pension - 6.00% a year, compounded annually net of investment and administrative expenses for the MIP, Basic Pension Plus, and Pension Plus 2 Plan groups.

Investment Rate of Return for OPEB - 6.00% a year, compounded annually net of investment and administrative expenses.

Salary Increases - The rate of pay increase used for individual members is 2.75% - 11.55%, including wage inflation at 2.75%.

Inflation - 3.0%.

Mortality Assumptions -

Retirees: PubT-2010 Male and Female Retiree Mortality Tables scaled by 116% for males and 116% for females and adjusted for mortality improvements using projection scale MP-2021 from 2010.

Active: PubT-2010 Male and Female Employee Mortality Tables scaled 100% and MP-202 adjusted for mortality improvements using projection scale from 2010.

Disabled Retirees: PubNS-2010 Male and Female Disabled Retiree Mortality Tables scaled 100% and adjusted for mortality improvements using projection scale MP-2021 from 2010.

Experience Study - The annual actuarial valuation report of the System used for these statements is dated September 30, 2022. Assumption changes as a result of an experience study for the periods 2017 through 2022 have been adopted by the System for use in the determination of the total pension and OPEB liability beginning with the September 30, 2023, valuation.

The Long-Term Expected Rate of Return on Pension and Other Postemployment Benefit Plan Investments - The pension rate was 6.00% (MIP, Basic, Pension Plus Plan, and Pension Plus 2 Plan), and the other postemployment benefit rate was 6.00%, net of investment and administrative expenses was determined using a building block method in which best-estimate ranges of expected future real rates of return (expected returns, net of pension and OPEB plan investment expense and inflation) are developed for each major asset class. These ranges are combined to produce the long-term expected rate of return by weighting the expected future real rates of return by the target asset allocation percentage and by adding expected inflation.

Forest Hills Public Schools

Notes to Financial Statements

Cost of Living Pension Adjustments - 3.0% annual non-compounded for MIP members.

Healthcare Cost Trend Rate for Other Postemployment Benefit - Pre 65, 7.50% for year one and graded to 3.5% in year fifteen. Post 65, 6.25% for year one and graded to 3.5% in year fifteen.

Additional Assumptions for Other Postemployment Benefit Only - Applies to Individuals Hired Before September 4, 2012:

Opt Out Assumption - 21% of eligible participants hired before July 1, 2008, and 30% of those hired after June 30, 2008, are assumed to opt out of the retiree health plan.

Survivor Coverage - 80% of male retirees and 67% of female retirees are assumed to have coverage continuing after the retiree's death.

Coverage Election at Retirement - 75% of male and 60% of female future retirees are assumed to elect coverage for 1 or more dependents.

The target asset allocation at September 30, 2023 and best estimates of arithmetic real rates of return for each major asset class are summarized in the following table:

Investment Category	Target Allocation	Long-term Expected Real Rate of Return*
Domestic Equity Pools	25.0%	5.8%
International Equity Pools	15.0%	6.8%
Private Equity Pools	16.0%	9.6%
Real Estate and Infrastructure Pools	10.0%	6.4%
Fixed Income Pools	13.0%	1.3%
Absolute Return Pools	9.0%	4.8%
Real Return/Opportunistic Pools	10.0%	7.3%
Short Term Investment Pools	2.0%	0.3%
	100.0%	

* Long term rates of return are net of administrative expenses and 2.7% inflation.

Rate of Return - For fiscal year ended September 30, 2023, the annual money-weighted rate of return on pension and OPEB plan investments, net of pension and OPEB plan investment expense, was (8.29)% and (7.94)%, respectively. The money-weighted rate of return expresses investment performance, net of investment expense, adjusted for the changing amounts actually invested.

Forest Hills Public Schools

Notes to Financial Statements

Pension Discount Rate - A single discount rate of 6.00% was used to measure the total pension liability. This discount rate was based on the expected rate of return on pension plan investments of 6.00%. The projection of cash flows used to determine this single discount rate assumed that plan member contributions will be made at the current contribution rate and that contributions from school districts will be made at rates equal to the difference between actuarially determined contribution rates and the member rate. Based on those assumptions, the pension plan's fiduciary net position was projected to be available to make all projected future benefit payments of current plan members. Therefore, the long-term expected rate of return on pension plan investments was applied to all periods of projected benefit payments to determine the total pension liability.

OPEB Discount Rate - A single discount rate of 6.00% was used to measure the total OPEB liability. This discount rate was based on the long-term expected rate of return on OPEB plan investments of 6.00%. The projection of cash flows used to determine this discount rate assumed that plan member contributions will be made at the current contribution rate and that school districts contributions will be made at rates equal to the difference between actuarially determined contribution rates and the member rate. Based on these assumptions, the OPEB plan's fiduciary net position was projected to be available to make all projected future benefit payments of current plan members. Therefore, the long-term expected rate of return on OPEB plan investments was applied to all periods of projected benefit payments to determine the total OPEB liability.

Sensitivity of the Net Pension Liability to Changes in the Discount Rate - The following presents the Reporting Unit's proportionate share of the net pension liability calculated using a single discount rate of 6.00%, as well as what the Reporting Unit's proportionate share of the net pension liability would be if it were calculated using a discount rate that is 1-percentage point lower or 1-percentage point higher than the current rate:

	Pension		
	1% Decrease	Discount Rate	1% Increase
Reporting Unit's proportionate share of the net pension liability	\$ 278,520,182	\$ 206,158,983	\$ 145,915,668

Sensitivity of the Net OPEB Liability (Asset) to Changes in the Discount Rate - The following presents the Reporting Unit's proportionate share of the net OPEB liability (asset) calculated using a single discount rate of 6.00%, as well as what the Reporting Unit's proportionate share of the net OPEB liability (asset) would be if it were calculated using a discount rate that is 1-percentage point lower or 1-percentage point higher than the current rate:

	Other Postemployment Benefits		
	1% Decrease	Discount Rate	1% Increase
Reporting Unit's proportionate share of the net other postemployment benefits liability (asset)	\$ 3,642,841	\$ (3,513,881)	\$ (9,664,381)

Forest Hills Public Schools

Notes to Financial Statements

Sensitivity to the Net OPEB Liability (Asset) to Changes in the Healthcare Cost Trend Rates - The following presents the Reporting Unit’s proportionate share of the net other postemployment benefit liability (asset) calculated using the healthcare cost trend rate, as well as what the Reporting Unit’s proportionate share of the net other postemployment benefit liability (asset) would be if it were calculated using a healthcare cost trend rate that is 1-percentage point lower or 1-percentage point higher than the current rate:

	Other Postemployment Benefits		
	1% Decrease	Current Healthcare Cost Trend Rates	1% Increase
Reporting Unit's proportionate share of the net other postemployment benefits liability (asset)	\$ (9,679,716)	\$ (3,513,881)	\$ 3,159,573

Pension and OPEB Plan Fiduciary Net Position

Detailed information about the pension and OPEB’s fiduciary net position is available in the separately issued Michigan Public School Employees’ Retirement System 2023 Annual Comprehensive Financial Report.

Payable to the Pension and OPEB Plan - At year end the School District is current on all required pension and other postemployment benefit plan payments. Amounts accrued at year end for accounting purposes are separately stated in the financial statements as a liability titled accrued retirement. These amounts represent current payments for June paid in July, accruals for summer pay primarily for teachers, and the contributions due from State Revenue Section 147c restricted to fund the MPSERS Unfunded Actuarial Accrued Liability (UAAL).

9. Risk Management and Benefits

The District is exposed to various risks of loss related to torts; theft of, damage to, and destruction of assets; errors and omission; injuries to employees and natural disasters. The District is a member of the West Michigan Risk Management Trust (Trust), a self-insurance program with 18 districts pooling together to insure property, liability, and auto exposures. Premiums from members of the Trust are arrived at through standard underwriting procedures. The members of the Trust have contributed amounts sufficient to fund individual and aggregate losses up to \$250,000 and \$1,350,000, respectively, on an annual basis. Excess insurance has been purchased to cover claims exceeding those amounts. Specific types of coverage are listed in the supplemental material. A \$1,000 per occurrence deductible for property losses is maintained to place the responsibility for small charges with the members of the Trust.

The District carries commercial insurance for other risks of loss, including employee health and accident insurance. No settlements have occurred in excess of coverage for June 30, 2024, or any of the prior three years.

Forest Hills Public Schools

Notes to Financial Statements

10. Bond Compliance

The Capital Projects Funds include activities funded by bond. For these capital projects, the District has complied with the applicable provisions of Section 1351(a) of the Revised School Code. Beginning with the year of bond issuance, the District has reported the annual construction activity in the Capital Projects Funds as follows:

<i>June 30, 2024</i>	Cumulative Revenues	Cumulative Expenditures (excluding transfers)
2019 Bonds	\$ 705,106	\$ 38,301,615
2021 Bonds	\$ 2,910,493	\$ 64,655,571
2023 Bonds	\$ 1,847,155	\$ 232,965

The above revenue excludes net bond proceeds of \$38,109,428 for the 2019 bonds, \$63,158,682 for the 2021 bonds, and \$29,086,019 for the 2023 bonds.

11. Contingent Liabilities

Amounts received or receivable from grant agencies are subject to audit and adjustments by grantor agencies, principally the federal government. Any disallowed claims, including amounts already collected, may constitute a liability of the applicable funds. The amount, if any, of expenditures that may be disallowed by the grantor cannot be determined at this time, although the District expects such amounts, if any, to be immaterial.

12. Tax Abatements

The District receives reduced property tax revenues as a result of Industrial Facilities Tax exemptions granted by townships. Industrial facility exemptions are intended to promote construction of new industrial facilities, or to rehabilitate historical facilities. The property taxes abated for all funds by municipality under these programs are as follows:

Municipality	Taxes abated
Ada Township	\$ 272,408
Cascade Township	49,898
	\$ 322,306

The taxes abated for the general fund operating millage is considered by the State of Michigan when determining the District's Section 22 Funding of the State School Aid Act.

There are no abatements made by the District.

Forest Hills Public Schools

Notes to Financial Statements

13. Upcoming Accounting Pronouncements

In June 2022, the GASB issued Statement No. 101, *Compensated Absences*. This Statement requires that liabilities for compensated absences be recognized for (1) leave that has not been used and (2) leave that has been used but not yet paid in cash or settled through noncash means. A liability should be recognized for leave that has not been used if (a) the leave is attributable to services already rendered, (b) the leave accumulates, and (c) the leave is more likely than not to be used for time off or otherwise paid in cash or settled through noncash means. This Statement also establishes guidance for measuring a liability for leave that has not been used, generally using an employee's pay rate as of the date of the financial statements. The District is currently evaluating the impact this standard will have on the financial statements when adopted during the 2024-2025 fiscal year.

In December 2023, the GASB issued Statement No. 102, *Certain Risk Disclosures*. This Statement requires a government to assess whether a concentration or constraint makes the government vulnerable to the risk of a substantial impact. Additionally, this Statement requires a government to assess whether an event or events associated with a concentration or constraint that could cause substantial impact have occurred, have begun to occur, or are more likely than not to begin to occur within 12 months of the date the financial statements are issued. If a government determines that those criteria for disclosure have been met for a concentration or constraint, it should disclose information in notes to financial statements in sufficient detail to enable users of financial statements to understand the nature of circumstances disclosed and the government's vulnerability to the risk of substantial impact. The District is currently evaluating the impact this standard will have on the financial statements when adopted during the 2024-2025 fiscal year.

In April 2024, the GASB issued Statement No. 103, *Financial Reporting Model Improvements*. This Statement establishes new accounting and financial reporting requirements - or modifies existing requirements - related to the following:

- a. Management's discussion and analysis (MD&A);
 - i. Requires that the information presented in MD&A be limited to the related topics discussed in five specific sections:
 - 1) Overview of the Financial Statements,
 - 2) Financial Summary,
 - 3) Detailed Analyses,
 - 4) Significant Capital Asset and Long-Term Financing Activity,
 - 5) Currently Known Facts, Decisions, or Conditions;
 - ii. Stresses detailed analyses should explain why balances and results of operations changed rather than simply presenting the amounts or percentages by which they changed;
 - iii. Removes the requirement for discussion of significant variations between original and final budget amounts and between final budget amounts and actual results;
- b. Unusual or infrequent items;
- c. Presentation of the proprietary fund statement of revenues, expenses, and changes in fund net position;
 - i. Requires that the proprietary fund statement of revenues, expenses, and changes in fund net position continue to distinguish between operating and nonoperating revenues and expenses and clarifies the definition of operating and nonoperating revenues and expenses;
 - ii. Requires that a subtotal for *operating income (loss) and noncapital subsidies* be presented before reporting other nonoperating revenues and expenses and defines subsidies;
- d. Information about major component units in basic financial statements should be presented separately in the statement of net position and statement of activities unless it reduces the readability of the statements in which case combining statements of should be presented after the fund financial statements;

Forest Hills Public Schools

Notes to Financial Statements

- e. Budgetary comparison information should include variances between original and final budget amounts and variances between final budget and actual amounts with explanations of significant variances required to be presented in the notes to RSI.

The District is currently evaluating the impact this standard will have on the financial statements when adopted during the 2025-2026 fiscal year.

Required Supplementary Information

Forest Hills Public Schools

Required Supplementary Information Budgetary Comparison Schedule - General Fund

<i>Year ended June 30, 2024</i>	Original Budget	Final Budget	Actual	Variance With Final Budget
Revenues				
Local sources	\$ 25,687,675	\$ 28,522,147	\$ 28,860,322	\$ 338,175
State sources	86,289,689	90,753,878	92,333,501	1,579,623
Federal sources	6,616,288	8,226,253	8,200,779	(25,474)
Incoming transfers and other	10,310,600	10,735,423	10,634,533	(100,890)
Total revenues	128,904,252	138,237,701	140,029,135	1,791,434
Expenditures				
Current				
Instruction				
Basic programs	69,783,191	72,917,450	71,837,917	1,079,533
Added needs	8,309,543	8,611,693	8,600,619	11,074
Total instruction	78,092,734	81,529,143	80,438,536	1,090,607
Support services				
Pupil	9,240,540	9,808,815	9,682,594	126,221
Instructional staff	5,530,178	5,753,014	5,734,166	18,848
General administration	728,086	672,593	667,468	5,125
School administration	7,305,695	7,648,486	7,675,887	(27,401)
Business	1,966,575	1,948,758	1,689,442	259,316
Operation/maintenance	11,648,715	13,324,831	12,878,164	446,667
Pupil transportation	6,287,850	6,762,950	6,222,420	540,530
Central services	3,821,898	4,449,927	4,005,483	444,444
Other support services	3,270,776	3,498,278	3,534,376	(36,098)
Total support services	49,800,313	53,867,652	52,090,000	1,777,652
Community services	1,702,183	1,866,842	1,697,325	169,517
Debt service				
Principal		315,365	367,433	(52,068)
Interest			20,830	(20,830)
Total debt service		315,365	388,263	(72,898)
Outgoing transfers and other	333,365	163,200	163,200	
Total expenditures	129,928,595	137,742,202	134,777,324	2,964,878
Excess (deficiency) of revenues over (under) expenditures	(1,024,343)	495,499	5,251,811	4,756,312
Other Financing Sources (Uses)				
Sale of capital assets	50,000	71,175	71,165	(10)
Transfers out	(13)	(13)	(13)	
Transfers in	380,000	380,000	380,000	
Proceeds from subscription-based IT arrangements			208,448	208,448
Total other financing sources (uses)	429,987	451,162	659,600	208,438
Changes in fund balances	\$ (594,356)	\$ 946,661	5,911,411	\$ 4,964,750
Fund Balances, beginning of year			<u>18,560,847</u>	
Fund Balances, end of year			<u>\$ 24,472,258</u>	

Forest Hills Public Schools

Required Supplementary Information Schedule of the Reporting Unit's Proportionate Share of the Net Pension Liability

Michigan Public School Employee Retirement Plan

Last Ten Fiscal Years (Determined as of plan year ended September 30)

	2023	2022	2021	2020	2019	2018	2017	2016	2015	2014
Reporting Unit's proportion of net pension liability (%)	0.63696%	0.64678%	0.62635%	0.62651%	0.63621%	0.64398%	0.64621%	0.64748%	0.66514%	0.65714%
Reporting Unit's proportionate share of net pension liability	\$ 206,158,983	\$ 243,246,630	\$ 148,290,484	\$ 215,211,777	\$ 210,690,414	\$ 193,593,162	\$ 167,461,311	\$ 161,540,348	\$ 162,459,976	\$ 144,743,892
Reporting Unit's covered-employee payroll	\$ 61,899,401	\$ 63,286,514	\$ 56,892,487	\$ 55,042,380	\$ 55,296,936	\$ 54,481,110	\$ 54,393,825	\$ 54,658,644	\$ 56,533,172	\$ 56,799,068
Reporting Unit's proportionate share of net pension liability as a percentage of its covered-employee payroll	333.05%	384.36%	260.65%	390.99%	381.02%	355.34%	307.87%	295.54%	287.37%	254.83%
Plan fiduciary net position as a percentage of total pension liability (non-university employers)	65.91%	60.77%	72.60%	59.72%	60.31%	62.36%	64.21%	63.27%	63.17%	66.20%

Forest Hills Public Schools
Required Supplementary Information
Schedule of the Reporting Unit's Pension Contributions
Michigan Public School Employee Retirement Plan
Last Ten Fiscal Years (Determined as of the year ended June 30)

	2024	2023	2022	2021	2020	2019	2018	2017	2016	2015
Statutorily required contributions	\$ 25,109,448	\$ 29,203,718	\$ 21,180,572	\$ 18,356,199	\$ 16,977,014	\$ 16,594,792	\$ 16,891,003	\$ 14,928,424	\$ 14,194,187	\$ 11,944,916
Contributions in relation to statutorily required contributions	25,109,448	29,203,718	21,180,572	18,356,199	16,977,014	16,594,792	16,891,003	14,928,424	14,194,187	11,944,916
Contribution deficiency (excess)	\$ -	\$ -	\$ -	\$ -	\$ -	\$ -	\$ -	\$ -	\$ -	\$ -
Reporting Unit's covered-employee payroll	\$ 63,230,106	\$ 61,550,355	\$ 60,189,541	\$ 56,405,803	\$ 55,173,961	\$ 55,275,159	\$ 54,414,234	\$ 56,015,095	\$ 55,051,841	\$ 57,042,047
Contributions as a percentage of covered-employee payroll	39.71%	47.45%	35.19%	32.54%	30.77%	30.02%	31.04%	26.65%	25.78%	20.94%

Forest Hills Public Schools

Required Supplementary Information Schedule of the Reporting Unit's Proportionate Share of the Net OPEB Liability (Asset)

Michigan Public School Employee Retirement Plan

Last Seven Fiscal Years (Determined as of plan year ended September 30)

	2023	2022	2021	2020	2019	2018	2017
Reporting Unit's proportion of net OPEB liability (%)	0.62116%	0.65344%	0.63058%	0.62232%	0.63331%	0.64002%	0.64637%
Reporting Unit's proportionate share of net OPEB liability (asset)	\$ (3,513,881)	\$ 13,840,268	\$ 9,625,097	\$ 33,339,490	\$ 45,457,453	\$ 50,874,956	\$ 57,238,748
Reporting Unit's covered-employee payroll	\$ 61,899,401	\$ 63,286,514	\$ 56,892,487	\$ 55,042,380	\$ 55,296,936	\$ 54,481,110	\$ 54,393,825
Reporting Unit's proportionate share of net OPEB liability (asset) as a percentage of its covered-employee payroll	5.68%	21.87%	16.92%	60.57%	82.21%	93.38%	105.23%
Plan fiduciary net position as a percentage of total OPEB liability (non-university employers)	105.04%	83.09%	87.33%	59.44%	48.46%	42.95%	36.39%

This schedule is presented to illustrate the requirement to show information for ten years. However, until a full ten-year trend is compiled, the District presents information for those years for which information is available.

Forest Hills Public Schools

Required Supplementary Information Schedule of the Reporting Unit's OPEB Contributions Michigan Public School Employee Retirement Plan Last Seven Fiscal Years (Determined as of the year ended June 30)

		2024		2023		2022		2021		2020		2019		2018
Statutorily required OPEB contributions	\$	5,299,149	\$	5,077,189	\$	4,999,425	\$	4,873,960	\$	4,726,246	\$	4,543,578	\$	4,739,561
Contributions in relation to statutorily required contributions		5,299,149		5,077,189		4,999,425		4,873,960		4,726,246		4,543,578		4,739,561
Contribution deficiency (excess)	\$	-	\$	-	\$	-	\$	-	\$	-	\$	-	\$	-
Reporting Unit's covered-employee payroll (OPEB)	\$	63,230,106	\$	61,550,355	\$	60,189,451	\$	56,405,803	\$	55,173,961	\$	55,275,159	\$	54,414,234
OPEB contributions as a percentage of covered-employee payroll		8.38%		8.25%		8.31%		8.64%		8.57%		8.22%		8.71%

This schedule is presented to illustrate the requirement to show information for ten years. However, until a full ten-year trend is compiled, the District presents information for those years for which information is available.

Forest Hills Public Schools

Notes to the Required Supplementary Information

1. Pension Information

Benefit Changes - there were no changes of benefit terms in 2023.

Changes of Assumptions - the assumption changes for 2023 were:

Mortality assumptions were updated to the Pub-2010 Male and Female Retiree Mortality Tables from the RP-2014 Male and Female Healthy Annuitant table.

2. OPEB Information

Benefit Changes - there were no changes of benefit terms in 2023.

Changes of Assumptions - the assumption changes for 2023 were:

Healthcare Cost Trend Rate

Pre 65 decreased to 7.50% for year one graded to 3.50% for year fifteen from 7.75% for year one graded to 3.50% for year fifteen.

Post 65 increased to 6.25% for year one and graded to 3.5% for year fifteen from 5.25% for year one and graded to 3.5% for year fifteen.

Mortality assumptions were updated to the Pub-2010 Male and Female Retiree Mortality Tables from the RP-2014 Male and Female Healthy Annuitant table.

Additional Supplementary Information

General Fund

Forest Hills Public Schools

General Fund

To account for resources except those required to be accounted for in another fund.

Forest Hills Public Schools

General Fund Schedule of Revenues and Other Financing Sources - Budget to Actual

<i>Year ended June 30, 2024</i>	Final Budget	Actual	Variance
Revenues			
Local Sources			
Property taxes	\$ 24,780,000	\$ 24,912,114	\$ 132,114
Revenue in lieu of taxes	15,000	13,726	(1,274)
Tuition (fees for instruction)	40,000	46,650	6,650
Investment income	1,500,000	1,566,569	66,569
Student activity revenue:			
Admissions, athletics	275,000	272,919	(2,081)
Admissions, other	125,000	101,998	(23,002)
Dues and fees, athletics	400,000	383,782	(16,218)
Community service revenue:			
Community and aquatic center	485,000	461,782	(23,218)
Other local revenue:			
Rentals	120,000	174,982	54,982
Private sources	315,147	341,319	26,172
Miscellaneous other local revenue	467,000	584,481	117,481
Total revenues from local sources	28,522,147	28,860,322	338,175
State Sources			
Restricted	26,070,878	27,428,101	1,357,223
Unrestricted	64,603,000	64,825,871	222,871
Payments in lieu of taxes	80,000	79,529	(471)
Total revenues from state sources	\$ 90,753,878	\$ 92,333,501	\$ 1,579,623

Forest Hills Public Schools

General Fund Schedule of Revenues and Other Financing Sources - Budget to Actual

<i>Year ended June 30, 2024</i>	Final Budget	Actual	Variance
Federal Sources			
IDEA	\$ 1,930,182	\$ 1,930,182	
ESSER	5,663,175	5,716,341	\$ 53,166
Title I	243,793	247,335	3,542
Title II	109,100	101,884	(7,216)
Title III	113,350	47,428	(65,922)
Other grants	166,653	157,609	(9,044)
Total revenues from federal sources	8,226,253	8,200,779	(25,474)
Other Governmental Units			
Kent ISD Act 18 special education millage	5,886,500	5,886,470	(30)
Special education transportation	1,230,000	1,120,587	(109,413)
Other payments received from other governments	3,618,923	3,627,476	8,553
Total revenues from other governmental units	10,735,423	10,634,533	(100,890)
Total revenues	138,237,701	140,029,135	1,791,434
Other Financing Sources			
Sale of capital assets	71,175	71,165	(10)
Transfers in	380,000	380,000	
Proceeds from subscription-based IT arrangements		208,448	208,448
Total other financing sources	451,175	659,613	208,438
Total Revenues and Other Financing Sources	\$ 138,688,876	\$ 140,688,748	\$ 1,999,872

Forest Hills Public Schools

General Fund Schedule of Expenditures and Other Financing Uses - Budget to Actual

<i>Year ended June 30, 2024</i>	Salaries	Employee Benefits Retirement	Employee Benefits FICA	Employee Benefits Other
Expenditures				
Instruction				
Basic programs	\$ 37,892,947	\$ 18,890,336	\$ 2,656,467	\$ 7,658,797
Added needs	4,802,551	2,353,549	343,352	781,369
Total instruction	42,695,498	21,243,885	2,999,819	8,440,166
Support Services				
Pupil services	2,738,751	1,347,273	192,599	447,754
Instructional staff	2,743,271	1,366,334	197,270	550,041
General administration	269,189	74,568	20,054	74,425
School administration	4,130,220	2,083,934	284,857	1,032,809
Business	730,711	371,671	50,866	178,282
Operations and maintenance	3,298,901	1,604,516	243,452	578,887
Pupil transportation	2,073,485	974,510	152,930	388,354
Central services	1,692,866	776,190	109,300	344,893
Other support	1,609,483	746,569	119,398	114,670
Total support services	19,286,877	9,345,565	1,370,726	3,710,115
Community Services	596,366	281,734	40,135	115,955
Debt Service				
Principal				
Interest				
Total debt service				
Other Transactions				
Total expenditures	62,578,741	30,871,184	4,410,680	12,266,236
Other Financing Uses				
Transfers out				
Total Expenditures	\$ 62,578,741	\$ 30,871,184	\$ 4,410,680	\$ 12,266,236

Forest Hills Public Schools

General Fund Schedule of Expenditures and Other Financing Uses - Budget to Actual

Purchased Services	Supplies, Materials and Other	Total Actual Expenditures	Final Budget	Variance
\$ 1,488,643	\$ 3,250,727	\$ 71,837,917	\$ 72,917,450	\$ 1,079,533
254,153	65,645	8,600,619	8,611,693	11,074
1,742,796	3,316,372	80,438,536	81,529,143	1,090,607
523,487	4,432,730	9,682,594	9,808,815	126,221
435,417	441,833	5,734,166	5,753,014	18,848
206,563	22,669	667,468	672,593	5,125
46,606	97,461	7,675,887	7,648,486	(27,401)
158,501	199,411	1,689,442	1,948,758	259,316
3,610,997	3,541,411	12,878,164	13,324,831	446,667
334,442	2,298,699	6,222,420	6,762,950	540,530
1,056,223	26,011	4,005,483	4,449,927	444,444
630,180	314,076	3,534,376	3,498,278	(36,098)
7,002,416	11,374,301	52,090,000	53,867,652	1,777,652
541,239	121,896	1,697,325	1,866,842	169,517
	367,433	367,433	315,365	(52,068)
	20,830	20,830		(20,830)
	388,263	388,263	315,365	(72,898)
	163,200	163,200	163,200	
9,286,451	15,364,032	134,777,324	137,742,202	2,964,878
	13	13	13	
\$ 9,286,451	\$ 15,364,045	\$ 134,777,337	\$ 137,742,215	\$ 2,964,878

Nonmajor Governmental Funds

Forest Hills Public Schools

Nonmajor Governmental Funds

Special Revenue Funds

To account for and report proceeds of specific revenue sources that are restricted or committed to expenditure for specified purposes other than debt service or capital projects. The District maintains the following Special Revenue Funds:

Food Service Fund - to account for activity relating to cafeteria operations.

Student/School Activities Fund - to account for activities relating to student/school organizations.

Child Care Fund - to account for activities related to child care.

Capital Projects Fund

2019 Capital Projects Fund - accounts for the erection, renovation, furnishing and equipping of school buildings and other projects approved by voters. Funding is provided by the 2019 bond proceeds and interest earned.

Forest Hills Public Schools
Nonmajor Governmental Funds
Combining Balance Sheet

<i>June 30, 2024</i>	Food Service	Student/School Activities	Child Care	2019 Capital Projects Fund	Total
Assets					
Cash and investments	\$ 1,894,795	\$ 2,694,704	\$ 2,232,322	\$ 512,919	\$ 7,334,740
Accounts receivable	223	13,851	1		14,075
Intergovernmental receivable	22,070		968		23,038
Inventories	39,473				39,473
Prepaid expenditures		13,085	11,000		24,085
Deposits	225,000				225,000
Total Assets	\$ 2,181,561	\$ 2,721,640	\$ 2,244,291	\$ 512,919	\$ 7,660,411
Liabilities and Fund Balances					
Liabilities					
Accounts payable	\$ 7,984	\$ 57,209	\$ 5,535		\$ 70,728
Accrued payroll	5,667	12,785	34,566		53,018
Accrued retirement	2,680	5,637	14,935		23,252
Accrued expenditures	5,250	27,395	2,370		35,015
Intergovernmental payable		17			17
Due to other funds			1,892		1,892
Unearned revenue	123,270				123,270
Total liabilities	144,851	103,043	59,298		307,192
Fund Balances					
Nonspendable - deposits	225,000				225,000
Restricted for capital projects				\$ 512,919	512,919
Restricted for food service	1,811,710				1,811,710
Committed for student/ school activities		2,618,597			2,618,597
Committed for child care			2,184,993		2,184,993
Total fund balances	2,036,710	2,618,597	2,184,993	512,919	7,353,219
Total Liabilities and Fund Balances	\$ 2,181,561	\$ 2,721,640	\$ 2,244,291	\$ 512,919	\$ 7,660,411

Forest Hills Public Schools
Nonmajor Governmental Funds
Combining Statement of Revenues, Expenditures and Changes in Fund Balances

<i>Year ended June 30, 2024</i>	Food Service	Student/School Activities	Child Care	2019 Capital Projects Fund	Total
Revenues					
Local sources	\$ 631,536	\$ 2,792,897	\$ 1,144,206		\$ 4,568,639
State sources	3,214,853		25,030		3,239,883
Federal sources	1,653,510				1,653,510
Total revenues	5,499,899	2,792,897	1,169,236		9,462,032
Expenditures					
Salaries and wages	978,703		585,466		1,564,169
Employee benefits	609,536		434,722		1,044,258
Food and milk costs	2,113,367		48,239		2,161,606
Supplies, materials and other	185,895		77,874		263,769
Purchased services	715,406		39,186		754,592
Student/school activities		2,581,941			2,581,941
Capital outlay	503,661		55,676	\$ 351,004	910,341
Total expenditures	5,106,568	2,581,941	1,241,163	351,004	9,280,676
Excess (deficiency) of revenues over (under) expenditures	393,331	210,956	(71,927)	(351,004)	181,356
Other Financing Sources (Uses)					
Transfers in	13				13
Transfers out	(230,000)		(150,000)		(380,000)
Total other financing sources (uses)	(229,987)		(150,000)		(379,987)
Changes in fund balances	163,344	210,956	(221,927)	(351,004)	(198,631)
Fund Balances, beginning of year	1,873,366	2,407,641	2,406,920	863,923	7,551,850
Fund Balances, end of year	\$ 2,036,710	\$ 2,618,597	\$ 2,184,993	\$ 512,919	\$ 7,353,219

Forest Hills Public Schools

Special Revenue Funds Schedule of Revenues, Expenditures and Changes in Fund Balances - Budget to Actual

<i>Year ended June 30, 2024</i>	Food Service		
	Final Budget	Actual	Variance
Revenues			
Local sources			
Food sales	\$ 574,000	\$ 565,309	\$ (8,691)
Student/school activities			
Child care fees			
Investment income	65,000	66,227	1,227
State source			
Restricted state aid	3,150,970	3,214,853	63,883
Federal sources			
Child nutrition cluster	1,297,890	1,316,501	18,611
Donated commodities	325,000	337,009	12,009
Total revenues	5,412,860	5,499,899	87,039
Other Financing Sources			
Transfers in	13	13	
Total revenues and other financing sources	5,412,873	5,499,912	87,039
Expenditures			
Current			
Salaries and wages	971,050	978,703	(7,653)
Employee benefits	629,201	609,536	19,665
Food and milk costs	2,056,175	2,113,367	(57,192)
Supplies, materials and other	190,050	185,895	4,155
Purchased services	731,415	715,406	16,009
Student/school activities			
Capital outlay	602,700	503,661	99,039
Total expenditures	5,180,591	5,106,568	74,023
Other Financing Uses			
Transfers out	230,000	230,000	
Total expenditures and other financing uses	5,410,591	5,336,568	74,023
Excess (deficiency) of revenues and other financing sources over (under) expenditures and other financing uses	2,282	163,344	161,062
Fund Balances, beginning of year	1,873,366	1,873,366	
Fund Balances, end of year	\$ 1,875,648	\$ 2,036,710	\$ 161,062

Forest Hills Public Schools

Special Revenue Funds Schedule of Revenues, Expenditures and Changes in Fund Balances - Budget to Actual

Student/School Activities			Child Care		
Final Budget	Actual	Variance	Final Budget	Actual	Variance
\$ 2,500,000	\$ 2,666,959	\$ 166,959			
120,000	125,938	5,938	\$ 1,025,000	\$ 1,026,071	\$ 1,071
			117,000	118,135	1,135
			24,175	25,030	855
2,620,000	2,792,897	172,897	1,166,175	1,169,236	3,061
2,620,000	2,792,897	172,897	1,166,175	1,169,236	3,061
			572,850	585,466	(12,616)
			453,255	434,722	18,533
			50,300	48,239	2,061
			88,800	77,874	10,926
			50,530	39,186	11,344
2,660,000	2,581,941	78,059			
			62,000	55,676	6,324
2,660,000	2,581,941	78,059	1,277,735	1,241,163	36,572
			150,000	150,000	
2,660,000	2,581,941	78,059	1,427,735	1,391,163	36,572
(40,000)	210,956	250,956	(261,560)	(221,927)	39,633
2,407,641	2,407,641		2,406,920	2,406,920	
\$ 2,367,641	\$ 2,618,597	\$ 250,956	\$ 2,145,360	\$ 2,184,993	\$ 39,633

Schedules of Debt Service Requirements

Forest Hills Public Schools

2014 Building and Site Bonds - Bonded Debt

This issue consists of bonds ranging in denominations of \$2,300,000 dated May 8, 2014, with interest payable on May 1 and November 1 of each year. The following summary presents the bonds outstanding at June 30, 2024 together with the semi-annual interest requirements. The interest requirement is computed on the entire outstanding bond issue and represents the semi-annual interest requirement to be paid on the bond issue with no prior redemptions. The total bonds outstanding after payment of each annual principal requirement are also shown.

<i>Payment Date</i>	Rate	Requirements			Outstanding
		Principal	Interest	Total	
November 1, 2024	5.00		\$ 34,500	\$ 34,500	
May 1, 2025	5.00	\$ 2,300,000	34,500	2,334,500	
Total requirements		\$ 2,300,000	\$ 69,000	\$ 2,369,000	

Forest Hills Public Schools

2016 Building, Site and Refunding Bonds - Bonded Debt

This issue consists of bonds ranging in denominations from \$5,045,000 to \$5,230,000 dated April 20, 2016, with interest payable on May 1 and November 1 of each year. The following summary presents the bonds outstanding at June 30, 2024 together with the semi-annual interest requirements. The interest requirement is computed on the entire outstanding bond issue and represents the semi-annual interest requirement to be paid on the bond issue with no prior redemptions. The total bonds outstanding after payment of each annual principal requirement are also shown.

<i>Payment Date</i>	Rate	Requirements			Outstanding
		Principal	Interest	Total	
November 1, 2024	5.00		\$ 386,250	\$ 386,250	
May 1, 2025	5.00	\$ 5,045,000	386,250	5,431,250	\$ 10,405,000
November 1, 2025	5.00		260,125	260,125	
May 1, 2026	5.00	5,175,000	260,125	5,435,125	5,230,000
November 1, 2026	5.00		130,750	130,750	
May 1, 2027	5.00	5,230,000	130,750	5,360,750	
Total requirements		\$ 15,450,000	\$ 1,554,250	\$ 17,004,250	

Forest Hills Public Schools

2019 Building and Site Bonds - Bonded Debt

This issue consists of bonds ranging in denominations from \$2,150,000 to \$2,700,000 dated May 15, 2019, with interest payable on May 1 and November 1 of each year. The following summary presents the bonds outstanding at June 30, 2024 together with the semi-annual interest requirements. The interest requirement is computed on the entire outstanding bond issue and represents the semi-annual interest requirement to be paid on the bond issue with no prior redemptions. The total bonds outstanding after payment of each annual principal requirement are also shown.

<i>Payment Date</i>	Rate	Requirements			Outstanding
		Principal	Interest	Total	
November 1, 2024	5.00		\$ 597,500	\$ 597,500	
May 1, 2025	5.00	\$ 2,150,000	597,500	2,747,500	\$ 21,750,000
November 1, 2025	5.00		543,750	543,750	
May 1, 2026	5.00	2,200,000	543,750	2,743,750	19,550,000
November 1, 2026	5.00		488,750	488,750	
May 1, 2027	5.00	2,250,000	488,750	2,738,750	17,300,000
November 1, 2027	5.00		432,500	432,500	
May 1, 2028	5.00	2,300,000	432,500	2,732,500	15,000,000
November 1, 2028	5.00		375,000	375,000	
May 1, 2029	5.00	2,350,000	375,000	2,725,000	12,650,000
November 1, 2029	5.00		316,250	316,250	
May 1, 2030	5.00	2,400,000	316,250	2,716,250	10,250,000
November 1, 2030	5.00		256,250	256,250	
May 1, 2031	5.00	2,450,000	256,250	2,706,250	7,800,000
November 1, 2031	5.00		195,000	195,000	
May 1, 2032	5.00	2,500,000	195,000	2,695,000	5,300,000
November 1, 2032	5.00		132,500	132,500	
May 1, 2033	5.00	2,600,000	132,500	2,732,500	2,700,000
November 1, 2033	5.00		67,500	67,500	
May 1, 2034	5.00	2,700,000	67,500	2,767,500	
Total requirements		\$ 23,900,000	\$ 6,810,000	\$ 30,710,000	

Forest Hills Public Schools
2020 Refunding Bonds - Bonded Debt

This issue consists of bond payments from \$1,050,000 to \$1,075,000 dated February 27, 2020, with interest payable on May 1 and November 1 of each year. The following summary presents the bonds outstanding at June 30, 2024 together with the semi-annual interest requirements. The interest requirement is computed on the entire outstanding bond issue and represents the semi-annual interest requirement to be paid on the bond issue with no prior redemptions. The total bonds outstanding after payment of each annual principal requirement are also shown.

<i>Payment Date</i>	Rate	Requirements			Outstanding
		Principal	Interest	Total	
November 1, 2024	4.00		\$ 106,000	\$ 106,000	
May 1, 2025	4.00	\$ 1,050,000	106,000	1,156,000	\$ 4,250,000
November 1, 2025	4.00		85,000	85,000	
May 1, 2026	4.00	1,050,000	85,000	1,135,000	3,200,000
November 1, 2026	4.00		64,000	64,000	
May 1, 2027	4.00	1,050,000	64,000	1,114,000	2,150,000
November 1, 2027	4.00		43,000	43,000	
May 1, 2028	4.00	1,075,000	43,000	1,118,000	1,075,000
November 1, 2028	4.00		21,500	21,500	
May 1, 2029	4.00	1,075,000	21,500	1,096,500	
Total requirements		\$ 5,300,000	\$ 639,000	\$ 5,939,000	

Forest Hills Public Schools

2021 Building and Site Bonds - Bonded Debt

This issue consists of bonds ranging in denominations from \$2,800,000 to \$2,845,000 dated May 5, 2021, with interest payable on May 1 and November 1 of each year. The following summary presents the bonds outstanding at June 30, 2024 together with the semi-annual interest requirements. The interest requirement is computed on the entire outstanding bond issue and represents the semi-annual interest requirement to be paid on the bond issue with no prior redemptions. The total bonds outstanding after payment of each annual principal requirement are also shown.

<i>Payment Date</i>	Rate	Requirements			Outstanding
		Principal	Interest	Total	
November 1, 2024	4.00		\$ 610,275	\$ 610,275	
May 1, 2025	4.00	\$ 2,800,000	610,275	3,410,275	\$ 31,270,000
November 1, 2025	4.00		554,275	554,275	
May 1, 2026	4.00	2,840,000	554,275	3,394,275	28,430,000
November 1, 2026	4.00		497,475	497,475	
May 1, 2027	4.00	2,840,000	497,475	3,337,475	25,590,000
November 1, 2027	4.00		440,675	440,675	
May 1, 2028	4.00	2,840,000	440,675	3,280,675	22,750,000
November 1, 2028	4.00		383,875	383,875	
May 1, 2029	4.00	2,840,000	383,875	3,223,875	19,910,000
November 1, 2029	4.00		327,075	327,075	
May 1, 2030	4.00	2,840,000	327,075	3,167,075	17,070,000
November 1, 2030	4.00		270,275	270,275	
May 1, 2031	4.00	2,845,000	270,275	3,115,275	14,225,000
November 1, 2031	3.00		213,375	213,375	
May 1, 2032	3.00	2,845,000	213,375	3,058,375	11,380,000
November 1, 2032	3.00		170,700	170,700	
May 1, 2033	3.00	2,845,000	170,700	3,015,700	8,535,000
November 1, 2033	3.00		128,025	128,025	
May 1, 2034	3.00	2,845,000	128,025	2,973,025	5,690,000
November 1, 2034	3.00		85,350	85,350	
May 1, 2035	3.00	2,845,000	85,350	2,930,350	2,845,000
November 1, 2035	3.00		42,675	42,675	
May 1, 2036	3.00	2,845,000	42,675	2,887,675	
Total requirements		\$ 34,070,000	\$ 7,448,100	\$ 41,518,100	

Forest Hills Public Schools

2023 Building and Site Bonds - Bonded Debt

This issue consists of bonds ranging in denominations from \$1,100,000 to \$2,480,000 dated May 3, 2023, with interest payable on May 1 and November 1 of each year. The following summary presents the bonds outstanding at June 30, 2024 together with the semi-annual interest requirements. The interest requirement is computed on the entire outstanding bond issue and represents the semi-annual interest requirement to be paid on the bond issue with no prior redemptions. The total bonds outstanding after payment of each annual principal requirement are also shown.

<i>Payment Date</i>	Rate	Requirements			Outstanding
		Principal	Interest	Total	
November 1, 2024	5.00		\$ 638,750	\$ 638,750	
May 1, 2025	5.00	\$ 1,100,000	638,750	1,738,750	\$ 24,450,000
November 1, 2025	5.00		611,250	611,250	
May 1, 2026	5.00	1,380,000	611,250	1,991,250	23,070,000
November 1, 2026	5.00		576,750	576,750	
May 1, 2027	5.00	1,450,000	576,750	2,026,750	21,620,000
November 1, 2027	5.00		540,500	540,500	
May 1, 2028	5.00	1,520,000	540,500	2,060,500	20,100,000
November 1, 2028	5.00		502,500	502,500	
May 1, 2029	5.00	1,600,000	502,500	2,102,500	18,500,000
November 1, 2029	5.00		462,500	462,500	
May 1, 2030	5.00	1,680,000	462,500	2,142,500	16,820,000
November 1, 2030	5.00		420,500	420,500	
May 1, 2031	5.00	1,760,000	420,500	2,180,500	15,060,000
November 1, 2031	5.00		376,500	376,500	
May 1, 2032	5.00	1,850,000	376,500	2,226,500	13,210,000
November 1, 2032	5.00		330,250	330,250	
May 1, 2033	5.00	1,940,000	330,250	2,270,250	11,270,000
November 1, 2033	5.00		281,750	281,750	
May 1, 2034	5.00	2,040,000	281,750	2,321,750	9,230,000
November 1, 2034	5.00		230,750	230,750	
May 1, 2035	5.00	2,140,000	230,750	2,370,750	7,090,000
November 1, 2035	5.00		177,250	177,250	
May 1, 2036	5.00	2,250,000	177,250	2,427,250	4,840,000
November 1, 2036	5.00		121,000	121,000	
May 1, 2037	5.00	2,360,000	121,000	2,481,000	2,480,000
November 1, 2037	5.00		62,000	62,000	
May 1, 2038	5.00	2,480,000	62,000	2,542,000	
Total requirements		\$ 25,550,000	\$ 10,664,500	\$ 36,214,500	

Forest Hills Public Schools
2024 Refunding Bonds - Bonded Debt

This issue consists of bond payments of \$9,500,000 dated June 20, 2024, with interest payable on May 1 and November 1 of each year. The following summary presents the bonds outstanding at June 30, 2024 together with the semi-annual interest requirements. The interest requirement is computed on the entire outstanding bond issue and represents the semi-annual interest requirement to be paid on the bond issue with no prior redemptions. The total bonds outstanding after payment of each annual principal requirement are also shown.

<i>Payment Date</i>	Interest Rate	Requirements			Outstanding
		Principal	Interest	Total	
November 1, 2024	5.00		\$ 172,847	\$ 172,847	
May 1, 2025	5.00	\$ 9,500,000	237,500	9,737,500	
Total requirements		\$ 9,500,000	\$ 410,347	\$ 9,910,347	

Statistical Section (Unaudited)

Forest Hills Public Schools

Contents of the Statistical Section

This part of the Forest Hills Public Schools' annual comprehensive financial report presents detailed information as a context for understanding what the information in the financial statements, note disclosures and required supplementary information says about the District's overall financial health. Many of the schedules present data for the past fiscal years that will allow the reader to discern trends that cannot be seen in a single year's financial statement.

<u>Contents</u>	<u>Pages</u>
<i>Financial Trends</i> These schedules contain trend information to help the reader understand how the District's financial performance and well-being have changed over time.	80-93
<i>Revenue Capacity</i> These schedules contain information to help the reader assess locally levied taxes.	94-100
<i>Debt Capacity</i> These schedules present information to help the reader assess the District's current levels of outstanding debt and the District's ability to issue additional debt in the future.	101-103
<i>Demographic and Economic Information</i> These schedules offer demographic and economic indicators to help the reader understand the environment within which the District's financial activities take place.	104-105
<i>Operating Information</i> These schedules contain data to help the reader understand how the information in the District's financial report relates to the services the District provides and the activities it performs.	106-109

Sources: Unless otherwise noted, the information in these schedules is derived from the annual comprehensive financial reports for the relevant year. Certain other information had not been presented previously. The reported numbers begin with the year for which information believed to be accurate is available.

Forest Hills Public Schools

Net Position by Component, Last Ten Fiscal Years (accrual basis of accounting)

<i>June 30,</i>	Fiscal			
	2015 ^a	2016	2017	2018 ^b
Governmental Activities				
Net investment in capital assets	\$ 63,397,872	\$ 72,267,183	\$ 82,442,482	\$ 92,670,159
Restricted	717,856	935,395	243,417	285,124
Unrestricted	(133,689,138)	(136,333,815)	(135,975,963)	(188,166,552)
Total Primary Government Net Position	\$ (69,573,410)	\$ (63,131,237)	\$ (53,290,064)	\$ (95,211,269)

Note:

- ^a Net position was restated for fiscal year 2015 as of July 1, 2014 with the implementation of GASB 68 & 71.
- ^b Net position was restated for fiscal year 2018 as of July 1, 2017 with the implementation of GASB 75.
- ^c Net position was restated for fiscal year 2020 as of July 1, 2019 with the implementation of GASB 84.

Forest Hills Public Schools

Net Position by Component, Last Ten Fiscal Years (accrual basis of accounting)

Year	2019	2020 ^c	2021	2022	2023	2024
\$	100,659,291	\$ 110,806,686	\$ 119,970,709	\$ 129,253,918	\$ 142,937,027	\$ 151,636,386
	1,570,992	1,161,475	1,310,247	958,750	1,478,098	5,092,012
	(190,559,634)	(197,715,793)	(201,866,251)	(188,480,980)	(186,120,260)	(169,146,503)
\$	(88,329,351)	\$ (85,747,632)	\$ (80,585,295)	\$ (58,268,312)	\$ (41,705,135)	\$ (12,418,105)

Forest Hills Public Schools

Expenses, Program Revenues, and Net Expense, Last Ten Fiscal Years (accrual basis of accounting)

<i>Year ended June 30,</i>	2015	2016	2017	Fiscal 2018
Expenses				
Governmental Activities				
Instruction	\$ 64,544,787	\$ 63,942,467	\$ 64,446,086	\$ 64,909,724
Support services	37,451,007	37,606,093	36,611,517	37,722,135
Community services	1,517,366	1,494,516	1,520,515	1,352,800
Food service	2,593,543	2,565,137	2,542,861	2,580,872
Child care services	1,253,431	1,014,040	970,161	1,015,337
Student/school activities				
Interest on long-term debt	7,011,600	6,559,298	6,936,259	6,117,609
Unallocated depreciation	9,613,222	9,479,078	10,006,310	9,998,473
Total Expenses	123,984,956	122,660,629	123,033,709	123,696,950
Program Revenues				
Governmental Activities				
Charges for services:				
Instruction	135,502	105,385	226,759	192,101
Support services	625,591	639,960	533,388	698,847
Community services	673,419	674,740	467,448	474,533
Food service	1,981,213	2,023,918	2,152,971	2,097,923
Child care services	1,514,796	1,300,817	1,315,603	1,302,002
Miscellaneous	223,014	204,653	126,249	
Operating grants and contributions	18,572,147	15,873,817	20,204,594	16,676,306
Total Program Revenues	23,725,682	20,823,290	25,027,012	21,441,712
Net Expense	\$ (100,259,274)	\$ (101,837,339)	\$ (98,006,697)	\$ (102,255,238)

Forest Hills Public Schools

Expenses, Program Revenues, and Net Expense, Last Ten Fiscal Years (accrual basis of accounting)

Year	2019	2020	2021	2022	2023	2024
\$ 70,354,686	\$ 74,483,463	\$ 74,583,369	\$ 63,283,949	\$ 73,823,425	\$ 72,810,715	
40,427,153	42,062,600	44,410,770	40,903,737	46,041,659	49,994,788	
1,629,026	1,327,637	1,054,159	1,209,335	1,584,929	1,601,283	
2,549,198	2,662,245	2,873,152	3,600,705	4,047,081	4,461,263	
1,159,741	1,232,082	907,030	2,199,612	1,310,947	1,146,268	
	2,260,699	1,128,646	938,659	2,608,731	2,469,660	
5,325,769	5,851,861	5,398,595	6,178,362	5,622,101	5,917,931	
10,678,607	11,063,006	11,379,099	11,607,060	11,573,516	17,076,373	
132,124,180	140,943,593	141,734,820	129,921,419	146,612,389	155,478,281	
222,274	115,137	14,313	147,912	174,676	146,377	
773,963	496,311	548,273	698,199	796,772	831,396	
491,146	386,553	45,780	412,786	483,512	461,782	
1,978,443	1,493,552	380,297	597,678	2,272,512	565,309	
1,427,693	1,007,100	585,583	1,055,552	1,055,560	1,026,071	
16,074,711	20,183,849	25,333,479	31,102,663	33,348,878	49,530,071	
20,968,230	23,682,502	26,907,725	34,014,790	38,131,910	52,561,006	
\$ (111,155,950)	\$ (117,261,091)	\$ (114,827,095)	\$ (95,906,629)	\$ (108,480,479)	\$ (102,917,275)	

Forest Hills Public Schools

General Revenues and Total Change in Net Position, Last Ten Fiscal Years (accrual basis of accounting)

<i>Year ended June 30,</i>	2015	2016	2017	Fiscal 2018
Net Expense	\$ (100,259,274)	\$ (101,837,339)	\$ (98,006,697)	\$ (102,255,238)
General Revenues				
Governmental Activities				
Taxes:				
Property taxes levied for general purposes	14,326,407	14,772,583	14,660,861	15,433,724
Property taxes levied for debt service	23,670,284	24,304,723	23,963,417	24,804,807
Property taxes levied for recreation	3,025,379	3,146,080	3,147,568	3,259,954
Local revenue in lieu of taxes	122,141	270,335	116,852	121,544
Unrestricted state aid	65,549,917	64,641,082	64,681,612	64,057,748
Investment earnings	85,321	107,140	213,705	374,404
Intermediate sources				8,495,931
Miscellaneous	961,329	1,037,569	1,063,855	1,072,077
Total General Revenues	107,740,778	108,279,512	107,847,870	117,620,189
Change in Net Position	\$ 7,481,504	\$ 6,442,173	\$ 9,841,173	\$ 15,364,951

Forest Hills Public Schools

General Revenues and Total Change in Net Position, Last Ten Fiscal Years (accrual basis of accounting)

Year	2019	2020	2021	2022	2023	2024
\$	(111,155,950)	\$ (117,261,091)	\$ (114,827,095)	\$ (95,906,629)	\$ (108,480,479)	\$ (102,917,275)
16,207,936	17,456,180	18,038,908	18,338,415	19,111,423	20,658,627	
23,413,091	23,744,916	24,830,124	23,419,152	24,459,297	26,232,218	
3,369,128	3,551,034	3,701,731	3,779,438	3,968,025	4,253,487	
111,359	111,582	110,602	102,063	97,777	98,335	
64,048,028	61,669,844	62,722,016	61,165,891	63,048,075	64,825,871	
824,567	1,056,658	160,144	179,442	2,455,257	4,845,676	
8,942,727	9,289,045	9,521,627	9,704,487	10,704,165	10,632,174	
1,121,032	866,517	904,280	1,534,724	1,199,637	657,917	
118,037,868	117,745,776	119,989,432	118,223,612	125,043,656	132,204,305	
\$	6,881,918	\$ 484,685	\$ 5,162,337	\$ 22,316,983	\$ 16,563,177	\$ 29,287,030

Forest Hills Public Schools

Fund Balances, Governmental Funds, Last Ten Fiscal Years (modified accrual basis of accounting)

<i>June 30,</i>	Fiscal				
	2015	2016	2017	2018	2019
General Fund					
Nondisposable	\$ 263,531	\$ 221,789	\$ 248,562	\$ 241,287	\$ 269,407
Assigned	245,647			918,349	550,190
Unassigned	11,106,880	12,348,461	12,120,027	14,922,052	17,559,749
Total General Fund	\$ 11,616,058	\$ 12,570,250	\$ 12,368,589	\$ 16,081,688	\$ 18,379,346
All Other Governmental Funds					
Nondisposable	\$ 34,545	\$ 33,179	\$ 255,618	\$ 225,000	\$ 225,000
Restricted for capital projects	13,934,574	25,045,775 ^a	18,648,481	10,509,566	41,370,207
Restricted for debt service	2,100,282	2,128,397	1,288,196	1,178,837	2,428,199
Restricted for food service	280,333	277,152	313,505	426,293	603,127
Committed for child care program				1,000,525	1,182,401
Committed for student/school activities					
Assigned	559,321	740,998	921,933	81,760	
Total All Other Governmental Funds	\$ 16,909,055	\$ 28,225,501	\$ 21,427,733	\$ 13,421,981	\$ 45,808,934

Notes:

^a Increase in fund balance due to receipt of bond proceeds.

^b Fund balance was restated for fiscal year 2020 as of July 1, 2019 with the implementation of GASB 84.

Forest Hills Public Schools

Fund Balances, Governmental Funds, Last Ten Fiscal Years (modified accrual basis of accounting)

Year	2020	2021	2022	2023	2024
	\$ 105,314	\$ 142,069	\$ 177,847	\$ 486,469	\$ 511,090
	5,465,249	5,138,838	3,749,356	594,356	1,505,210
	14,143,557	16,445,121	14,724,520	17,480,022	22,455,958
	\$ 19,714,120	\$ 21,726,028	\$ 18,651,723	\$ 18,560,847	\$ 24,472,258
	\$ 225,000	\$ 225,000	\$ 225,000	\$ 225,000	\$ 225,000
^a	31,352,534	68,563,820	51,655,122	58,637,896	32,626,732
	2,045,738	2,356,291	1,883,875	2,474,574	2,485,755
	706,564	1,051,124	2,072,180	1,648,366	1,811,710
	933,395	537,535	1,200,107	2,406,920	2,184,993
	2,071,525	2,232,706	2,332,837	2,407,641	2,618,597
	\$ 37,334,756	\$ 74,966,476	\$ 59,369,121	\$ 67,800,397	\$ 41,952,787

Forest Hills Public Schools

Governmental Funds Revenues, Last Ten Fiscal Years (modified accrual basis of accounting)

<i>Year ended June 30,</i>	2015	2016	2017	Fiscal 2018
Revenues				
Federal Sources				
Federal grants	\$ 2,109,846	\$ 1,984,216	\$ 1,666,726	\$ 2,073,578
Food service fund	630,376	642,134	661,469	686,734
Child care fund				
Total federal sources	2,740,222	2,626,350	2,328,195	2,760,312
State Sources				
Restricted	9,341,042	11,115,341	11,554,483	13,191,626
Unrestricted	65,549,917	64,641,082	64,681,612	64,057,748
Total state sources	74,890,959	75,756,423	76,236,095	77,249,374
Other Governmental Units				
Kent ISD Act 18 special education millage	4,209,139	4,289,356	4,478,149	4,632,875
Miscellaneous	1,845,556	1,854,899	1,912,304	3,863,056
Total other governmental units	6,054,695	6,144,255	6,390,453	8,495,931
Local Sources				
Property taxes	41,022,070	42,223,386	41,771,846	43,498,485
Food service fund	1,983,034	2,025,611	2,157,340	2,105,935
Student/school activities fund ^a				
Child care fund	1,515,258	1,301,559	1,319,144	1,312,498
Interest and other income	85,321	107,140	213,705	374,410
Miscellaneous	3,344,612	3,282,827	2,924,277	3,165,758
Total local sources	47,950,295	48,940,523	48,386,312	50,457,086
Total Revenues	\$ 131,636,171	\$ 133,467,551	\$ 133,341,055	\$ 138,962,703

Notes:

^a The District created a new special revenue fund in fiscal year 2020 when it implemented GASB 84.

Forest Hills Public Schools

Governmental Funds Revenues, Last Ten Fiscal Years (modified accrual basis of accounting)

Year	2019	2020	2021	2022	2023	2024
	\$ 2,010,533	\$ 2,372,909	\$ 6,153,024	\$ 4,944,553	\$ 6,254,273	\$ 8,200,779
	701,751	1,296,775	2,940,020	4,521,565	1,546,906	1,653,510
				847,283	1,600,478	
	2,712,284	3,669,684	9,093,044	10,313,401	9,401,657	9,854,289
	13,218,996	13,951,199	15,720,472	20,236,381	28,827,580	31,278,844
	64,048,028	61,669,844	62,722,016	60,950,988	63,048,075	64,825,871
	77,267,024	75,621,043	78,442,488	81,187,369	91,875,655	96,104,715
	4,782,967	4,885,157	4,873,531	5,158,871	5,663,698	5,886,470
	4,159,760	4,403,888	4,648,096	4,545,616	5,040,467	4,748,063
	8,942,727	9,289,045	9,521,627	9,704,487	10,704,165	10,634,533
	42,990,155	44,752,130	46,570,763	45,537,005	47,538,745	51,144,332
	1,992,258	1,507,952	382,495	600,677	2,272,512	631,536
		2,235,190	1,289,827	2,299,743	2,597,175	2,792,897
	1,446,127	1,023,804	587,712	1,056,170	1,055,560	1,144,206
	824,567	1,056,658	160,144	179,442	2,455,257	4,845,676
	3,136,251	2,048,420	1,919,200	3,042,536	3,546,361	2,155,948
	50,389,358	52,624,154	50,910,141	52,715,573	59,465,610	62,714,595
	\$ 139,311,393	\$ 141,203,926	\$ 147,967,300	\$ 153,920,830	\$ 171,447,087	\$ 179,308,132

Forest Hills Public Schools

Governmental Funds Expenditures and Debt Service Ratio, Last Ten Fiscal Years (modified accrual basis of accounting)

<i>Year ended June 30,</i>	2015	2016	2017	Fiscal 2018
Expenditures				
Instruction	\$ 65,007,003	\$ 64,173,122	\$ 64,936,029	\$ 65,668,519
Pupil support services	7,176,444	7,443,937	7,449,946	7,529,705
Instructional support services	4,019,956	4,202,874	3,552,356	3,879,852
General administration	586,462	603,474	679,542	612,036
School administration	6,063,629	5,967,970	6,060,846	6,073,686
Business services	1,605,180	1,517,307	1,391,825	1,364,554
Operation and maintenance of plant	9,015,762	8,592,344	9,053,422	8,991,026
Pupil transportation services	5,162,620	5,113,062	5,189,040	5,125,520
Central support services	2,607,510	2,743,929	3,020,713	2,941,339
Other support services	2,450,889	2,215,106	2,214,779	2,253,608
Community services	1,529,757	1,514,292	1,527,074	1,365,708
Food service fund	2,598,303	2,574,089	2,547,840	2,630,140
Student/school activities fund ^a				
Child care fund	1,257,199	1,019,197	973,138	1,025,684
Capital outlay	10,632,548	7,689,855	6,476,189	7,323,935
Non-capitalized outlay ^b	136,533	513,624	33,523	913,490
Debt service				
Principal	15,505,000	16,780,000	18,175,000	19,310,000
Interest and other	8,876,340	8,143,839	7,087,167	6,271,228
Payment to escrow agent				
Bond issuance costs				
Outgoing transfers and other				
Total Expenditures	\$ 144,231,135	\$ 140,808,021	\$ 140,368,429	\$ 143,280,030
Debt Service as a Percentage of				
Noncapital Expenditures	18.2%	18.7%	18.9%	18.8%

Notes:

^a The District created a new special revenue fund in fiscal year 2020 when it implemented GASB 84.

^b In 2015 the District separated non-capitalized outlay from total capital outlay in order to more accurately record debt service as a percentage of non-capital expenditures.

Forest Hills Public Schools

Governmental Funds Expenditures and Debt Service Ratio, Last Ten Fiscal Years (modified accrual basis of accounting)

Year	2019	2020	2021	2022	2023	2024
\$	66,979,794	\$ 67,262,504	\$ 71,048,510	\$ 75,883,294	\$ 81,386,817	\$ 80,438,536
	7,916,550	7,958,453	8,214,945	9,510,031	9,417,084	9,682,594
	3,959,308	3,979,389	3,999,061	4,581,044	5,729,091	5,734,166
	611,116	614,505	607,606	659,024	1,005,932	667,468
	6,218,751	6,495,966	6,695,187	6,933,714	7,617,442	7,675,887
	1,437,176	1,446,029	1,617,289	1,738,452	1,917,825	1,689,442
	9,348,951	9,307,882	10,764,524	11,088,038	12,408,594	12,878,164
	5,476,337	5,090,759	4,786,115	5,427,012	6,538,360	6,222,420
	2,756,769	3,061,829	3,872,357	3,568,406	4,505,297	4,005,483
	2,352,810	2,572,578	2,896,256	3,078,921	3,350,349	3,534,376
	1,606,060	1,244,055	1,015,621	1,365,089	1,701,815	1,697,325
	2,533,428	2,624,078	2,877,408	3,732,280	3,454,610	4,602,907
		2,260,699	1,128,646	2,199,612	2,608,731	2,581,941
	1,114,619	1,122,810	868,572	1,088,747	1,196,108	1,185,487
	6,463,646	10,106,250	24,527,721	17,451,956	24,853,127	28,508,112
	754,243	511,885	1,091,209			767,902
	17,670,000	18,840,000	19,925,000	18,150,000	19,465,365	20,927,433
	5,365,464	6,064,472	5,239,364	6,302,364	5,659,458	6,009,878
						10,053,224
	247,420	126,967	357,287		232,965	129,954
						163,200
\$	142,812,442	\$ 150,691,110	\$ 171,532,678	\$ 172,757,984	\$ 193,048,970	\$ 209,155,899
	16.9%	17.7%	17.1%	15.7%	14.9%	14.9%

Forest Hills Public Schools

Other Financing Sources (Uses) and Net Change in Fund Balances, Governmental Funds, Last Ten Fiscal Years (modified accrual basis of accounting)

<i>Year ended June 30,</i>	Fiscal			
	2015	2016	2017	2018
Deficiency of Revenues Over Expenditures	\$ (12,594,964)	\$ (7,340,470)	\$ (7,027,374)	\$ (4,317,327)
Other Financing Sources (Uses)				
Issuance of bonds	59,625,000	48,130,000		
Premium on bonds issued	6,917,408	8,688,632		
Payment to escrow agent	(66,061,917)	(37,279,524)		
Proceeds from sale of capital assets	29,358	72,000	27,945	24,674
Proceeds from subscription-based IT				
Transfers in	329,000	295,300	284,100	285,000
Transfers out	(329,000)	(295,300)	(284,100)	(285,000)
Total Other Financing Sources (Uses)	509,849	19,611,108	27,945	24,674
Net Change in Fund Balances	\$ (12,085,115)	\$ 12,270,638	\$ (6,999,429)	\$ (4,292,653)

Forest Hills Public Schools

Other Financing Sources (Uses) and Net Change in Fund Balances, Governmental Funds, Last Ten Fiscal Years (modified accrual basis of accounting)

Year	2019	2020	2021	2022	2023	2024
\$	(3,501,049)	\$ (9,487,184)	\$ (23,565,378)	\$ (18,837,154)	\$ (21,601,883)	\$ (29,847,767)
	31,950,000	9,670,000	55,350,000		25,550,000	9,500,000
	6,159,428	1,302,057	7,808,682		3,536,019	131,955
		(10,845,090)				
	76,232	123,779	50,324	165,494	124,285	71,165
					731,979	208,448
	300,011	300,011	265,011	300,013	350,013	380,013
	(300,011)	(300,011)	(265,011)	(300,013)	(350,013)	(380,013)
	38,185,660	250,746	63,209,006	165,494	29,942,283	9,911,568
\$	34,684,611	\$ (9,236,438)	\$ 39,643,628	\$ (18,671,660)	\$ 8,340,400	\$ (19,936,199)

Forest Hills Public Schools

Taxable Value and Actual Value of Taxable Property, Last Ten Fiscal Years (rate per \$1,000 of assessed value)

<i>Tax Year</i>	Fiscal Year	Estimated Market Value	State Equalized Value
2014	2014 - 2015	6,412,942,200	3,206,471,100
2015	2015 - 2016	6,895,839,800	3,447,919,900
2016	2016 - 2017	7,178,210,000	3,589,105,000
2017	2017 - 2018	7,630,152,600	3,815,076,300
2018	2018 - 2019	7,872,913,000	3,936,456,500
2019	2019 - 2020	8,420,064,600	4,210,032,300
2020	2020 - 2021	8,944,665,484	4,472,332,742
2021	2021 - 2022	9,383,236,600	4,691,618,300
2022	2022 - 2023	9,985,594,000	4,992,797,000
2023	2023 - 2024	11,121,277,200	5,560,638,600

Source: County Equalization Department.

Notes: State Equalized Value is estimated at 50% of market value. Taxable Value is basis for tax levy. Annual growth for property limited to 5% or inflation whichever is less. Other millage includes Recreation millage from 2004 to present. Operating millage applied only against Non-Principal Residence exempt property. All other taxes applied against total Taxable Value.

Forest Hills Public Schools

Taxable Value and Actual Value of Taxable Property, Last Ten Fiscal Years (rate per \$1,000 of assessed value)

Taxable Value			Direct Tax Rates			
Non-Personal Residence Exempt Property	Personal Residence Exempt Property	Total	Operating	Debt	Other	Total
970,502,718	2,058,432,892	3,028,935,610	18.0000	7.8000	1.0000	26.8000
1,003,321,811	2,143,385,037	3,146,706,848	18.0000	7.7000	1.0000	26.7000
959,573,729	2,209,772,685	3,169,346,414	18.0000	7.6000	1.0000	26.6000
963,934,585	2,294,815,852	3,258,750,437	18.0000	7.6000	1.0000	26.6000
1,007,626,269	2,393,607,163	3,401,233,432	18.0000	6.9000	0.9973	25.8973
1,077,201,515	2,501,997,537	3,579,199,052	17.9184	6.6500	0.9945	25.5629
1,112,276,005	2,614,743,138	3,727,019,143	17.8467	6.6500	0.9901	25.4868
1,131,807,888	2,709,490,550	3,841,298,438	17.7824	6.1000	0.9845	24.8669
1,180,167,547	2,859,088,995	4,039,256,542	17.6614	6.0500	0.9815	24.6929
1,273,726,918	3,073,735,625	4,347,462,543	17.6614	6.0500	0.9815	24.6929

Forest Hills Public Schools

Direct and Overlapping Property Tax Rates, Last Ten Fiscal Years (rate per \$1,000 of assessed value)

<i>Tax Year</i>	Fiscal Year	Direct Tax Rates			Total
		Operating	Debt	Other	
2014	2014 - 2015	18.0000	7.8000	1.0000	26.8000
2015	2015 - 2016	18.0000	7.7000	1.0000	26.7000
2016	2016 - 2017	18.0000	7.6000	1.0000	26.6000
2017	2017 - 2018	18.0000	7.6000	1.0000	26.6000
2018	2018 - 2019	18.0000	6.9000	0.9973	25.8973
2019	2019 - 2020	17.9184	6.6500	0.9945	25.5629
2020	2020 - 2021	17.7824	6.1000	0.9845	24.8669
2021	2021 - 2022	17.7824	6.1000	0.9845	24.8669
2022	2022 - 2023	17.6614	6.0500	0.9815	24.6929
2023	2023 - 2024	17.6614	6.0500	0.9815	24.6929

Source: County Equalization Department.

Note: Other millage includes Recreation millage from 2004 to present. Operating millage applied only against Non-Homestead property. All other taxes applied against total Taxable Value.

Forest Hills Public Schools

Direct and Overlapping Property Tax Rates, Last Ten Fiscal Years (rate per \$1,000 of assessed value)

Overlapping Rates					
Ada Township	Cannon Township	Cascade Township	Grand Rapids Township	City of Grand Rapids	City of Kentwood
2.8605	2.1299	3.5244	1.5995	9.1518	9.6066
2.7861	2.1170	3.5244	1.5995	9.1515	9.6066
2.7371	2.1817	3.5244	1.5995	9.1166	9.6066
2.8379	2.3523	3.5244	1.5995	9.0258	9.6066
2.8383	2.2222	3.4623	1.5995	8.9710	9.6066
2.7716	2.2991	3.4623	1.5995	8.9011	9.6066
2.9583	2.2622	3.4471	1.5995	8.8070	9.6066
3.9730	2.2268	3.4381	1.5995	8.9950	9.5459
4.4168	2.6839	3.4312	1.5995	8.8331	9.4780
4.4168	2.6466	3.4312	1.5000	9.0325	9.4780

Forest Hills Public Schools

Principal Property Taxpayers, Current Year and Nine Years Ago

<i>Year ended December 31,</i>	2023				
Taxpayer	Ad Valorem Taxable Value	Rank	Percentage of Total Taxable Value	Equivalent Industrial Facilities Tax (IFT)	IFT and Taxable Value
Amway Corporation	\$ 87,610,829	1	2.55%	\$	87,610,829
Access Logistics Limited partner	20,829,905	2	0.61%		20,829,905
Access Business Group LLC	16,956,583	3	0.49%		16,956,583
Country Club Manor	15,870,474	4	0.46%		15,870,474
BHIP Stone Falls LLC	15,677,000	5	0.46%		15,677,000
Porter Hills Presbyterian Village	14,774,808	6	0.43%		14,774,808
Continental 362 Fund LLC	14,024,752	7	0.41%		14,024,752
Heritage Pointe Ventures II LLC	13,743,527	8	0.40%		13,743,527
Fifth Third Mortgage-MI LLC	12,789,942	9	0.37%		12,789,942
Consumers Energy	12,505,059	10	0.36%		12,505,059
Meijer Inc./Thrifty Kraft Inc.					
Paragon Die & Engineering					
Fifth Third Bank					
GE Aviation Systems LLC					
Alticor					
Total principal taxpayers	224,782,879		6.54%		224,782,879
Balance of valuations	3,210,681,096		93.46%		
Total Ad Valorem Valuation	\$ 3,435,463,975		100.00%		

Source: School District Local Tax Units.

Forest Hills Public Schools

Principal Property Taxpayers, Current Year and Nine Years Ago

2014					
	Taxable Value	Rank	Percentage of Total Taxable Value	Equivalent Industrial Facilities Tax (IFT)	IFT and Taxable Value
\$	63,475,436	2	2.17%		\$ 63,475,436
	14,322,232	3	0.49%		14,322,232
	66,490,300	1	2.28%		66,490,300
	12,525,643	7	0.43%		12,525,643
	22,390,490	4	0.77%		22,390,490
	20,109,251	5	0.69%		20,109,251
	11,585,949	8	0.40%	\$ 2,377,200	13,963,149
	10,654,300	9	0.36%		10,654,300
	14,092,720	10	0.48%		14,092,720
	20,748,700	6	0.71%		20,748,700
	256,395,021		8.78%	2,377,200	258,772,221
	2,664,115,946		91.22%		
\$	2,920,510,967		100.00%		

Forest Hills Public Schools

Property Tax Levies and Collections, Last Ten Fiscal Years

<i>Tax Year</i>	Fiscal Year	Taxes Levied for the Fiscal Year	Collected within the Fiscal Year of the Levy		Collections (Refunds) in Subsequent Years	Total Collections to Date	
			Amount	Percentage of Levy		Amount	Percentage of Levy
2014	2014 - 2015	41,068,632	41,021,579	99.89%	(129,878)	40,891,701	99.57%
2015	2015 - 2016	42,387,423	42,366,712	99.95%		42,366,712	99.95%
2016	2016 - 2017	42,319,919	42,237,897	99.81%	(638,240)	41,599,657	98.30%
2017	2017 - 2018	43,528,544	43,495,226	99.92%	(27,784)	43,467,442	99.86%
2018	2018 - 2019	43,135,797	43,146,520	100.02%	(171,620)	42,974,900	99.63%
2019	2019 - 2020	44,784,812	44,943,863	100.36%	(191,732)	44,752,131	99.93%
2020	2020 - 2021	46,664,997	46,844,935	100.39%	(195,375)	46,649,560	99.97%
2021	2021 - 2022	45,629,077	45,670,501	100.09%	(158,350)	45,512,151	99.74%
2022	2022 - 2023	47,713,067	47,636,522	99.84%	(112,833)	47,523,689	99.60%
2023	2023 - 2024	51,553,190	51,627,732	100.14%	(172,812)	51,454,920	99.81%

Sources: Kent County Equalization Department and District records.

Beginning in tax year 2016, collections and refunds related to previous years are being reported in the year they were collected.

Forest Hills Public Schools

Outstanding Debt by Type, Last Ten Fiscal Years

<i>Tax Year</i>	<i>Fiscal Year</i>	<i>Outstanding Debt</i>	<i>Total Taxable Value</i>	<i>Outstanding Debt as a % of Taxable Value</i>	<i>Estimated Population</i>	<i>Outstanding Debt Per Capita</i>	<i>Taxable Value Per Capita</i>
2014	2014 - 2015	\$ 172,318,568	\$ 3,028,935,610	5.69%	50,816	3,391	59,606
2015	2015 - 2016	173,737,250	3,146,706,848	5.52%	52,664	3,299	59,751
2016	2016 - 2017	153,304,009	3,169,346,414	4.84%	53,677	2,856	59,045
2017	2017 - 2018	131,735,768	3,258,750,437	4.04%	48,895	2,694	66,648
2018	2018 - 2019	149,865,205	3,401,233,432	4.41%	52,725	2,842	64,509
2019	2019 - 2020	128,318,598	3,579,199,052	3.59%	54,773	2,343	65,346
2020	2020 - 2021	169,069,334	3,727,019,143	4.54%	54,810	3,085	67,999
2021	2021 - 2022	148,762,856	3,841,298,438	3.87%	55,008	2,704	69,832
2022	2022 - 2023	156,504,938	4,039,256,542	3.87%	54,116	2,892	74,641
2023	2023 - 2024	130,526,481	4,347,462,543	3.00%	53,722	2,430	80,925

Sources: Kent County Equalization Department, Census Bureau estimates, District records.

Note: All outstanding debt is general obligation-unlimited tax debt.

Forest Hills Public Schools

Direct and Overlapping Governmental Activities Debt as of June 30, 2024

<i>Governmental Unit</i>	Debt Outstanding	Estimated Percentage Applicable	Estimated Share of Direct and Overlapping Debt
Ada Township	\$ 27,540,000	89.07%	\$ 24,529,878
Cannon Township	4,685,000	1.06%	49,661
Cascade Township	6,578,000	83.59%	5,498,550
Grand Rapids Township		87.61%	
City of Grand Rapids	202,277,500	1.57%	3,175,757
City of Kentwood	3,463,672	10.18%	352,602
Kent County	67,750,000	14.24%	9,647,600
Grand Rapids Community College	18,675,000	13.75%	2,567,813
Subtotal, overlapping debt			45,821,861
District Direct Debt			130,526,481
Total Direct and Overlapping Debt			\$ 176,348,342

Sources: Municipal Advisory Council of Michigan.

Forest Hills Public Schools

Legal Debt Margin Information, Last Ten Fiscal Years

Legal Debt Margin Calculation for Fiscal Year 2023-2024:

State Equalized Valuation (SEV), July 1, 2023	\$ 5,560,638,600
Statutory Debt Limit (15% of SEV)	834,095,790
Debt applicable to limit	176,348,342

Legal Debt Margin \$ 657,747,448

<i>Tax Year</i>	Fiscal Year	State Equalized Value (SEV)	Statutory Debt Limit 15% of SEV	Debt Subject to Debt Limit	Legal Debt Margin	Debt as a Percentage of Debt Limit
2014	2014 - 2015	3,206,471,100	480,970,665	161,305,000	319,665,665	33.54%
2015	2015 - 2016	3,447,919,900	517,187,985	210,911,674	306,578,401	40.78%
2016	2016 - 2017	3,589,105,000	538,365,750	194,580,809	343,784,941	36.14%
2017	2017 - 2018	3,815,076,300	572,261,445	173,174,536	399,086,909	30.26%
2018	2018 - 2019	3,936,456,500	590,468,475	189,889,418	400,579,057	32.16%
2019	2019 - 2020	4,210,032,300	631,504,845	192,641,925	418,157,183	30.51%
2020	2020 - 2021	4,472,332,742	670,849,911	209,224,141	461,625,770	31.19%
2021	2021 - 2022	4,691,618,300	703,742,745	188,917,663	494,518,604	26.84%
2022	2022 - 2023	4,992,797,000	748,919,550	204,751,500	544,168,052	27.34%
2023	2023 - 2024	5,560,638,600	834,095,790	176,348,342	657,747,449	21.14%

Notes: Personal Income data is located in the Demographic and Economic Statistics table.

Forest Hills Public Schools

Demographic and Economic Statistics, Last Ten Calendar Years

<i>Calendar Year</i>	Estimated Population ^a	Unemployment ^b			Inflation Rate ^c	Personal Income ^d	
		City of Grand Rapids *	County of Kent	State of Michigan		Total	Per Capita
2014	50,816	5.0%	4.9%	7.3%	0.8%	44,317,379	43,123
2015	52,664	3.7%	3.4%	4.6%	0.7%	47,121,348	45,371
2016	53,677	3.4%	3.4%	4.9%	2.1%	48,709,641	46,519
2017	53,780	3.6%	3.5%	4.6%	2.1%	51,537,497	48,661
2018	52,725	2.8%	3.3%	4.2%	2.1%	54,119,648	50,463
2019	54,773	2.9%	2.9%	4.1%	2.3%	54,223,857	50,330
2020	54,810	7.5%	7.7%	10.0%	1.4%	58,433,902	54,037
2021	55,008	3.9%	3.2%	5.1%	7.0%	61,939,936	56,569
2022	55,133	3.5%	3.7%	4.3%	7.0%	64,417,533	56,813
2023	55,268	4.0%	4.0%	4.4%	3.4%	67,983,934	62,131

Notes:

^a U.S. Census Bureau and estimated.

^b Federal Reserve Economic Data.

* Grand Rapids-Wyoming Metropolitan Statistical Area.

^c U. S. Department of Labor - Bureau of Labor Statistics.
National Consumer price index measured December to December.

^d U.S. Department of Commerce, Bureau of Economic Analysis and Grand Rapids Metropolitan Statistical Area.
Total Personal Income reported in thousands.

Forest Hills Public Schools

Principal Employers in West Michigan, Current Year and 2014

<i>Year ended December 31,</i>	2023			2014		
<i>Employer</i>	Employees	Rank	Percentage of Total Employment	Employees	Rank	Percentage of Total Employment
Corewell (formerly Spectrum) Health	25,000	1	3.0%	21,300	1	3.0%
Mercy Health	8,500	2	1.0%	6,600	3	0.9%
Meritage Hospitality Group Inc	7,000	3	0.8%			
Blackmer	5,600	4	0.7%			
Gordon Food Service Inc.	5,000	5	0.6%	2,172	10	0.3%
Meijer Inc.	5,000	6	0.6%	7,700	2	1.1%
Gentex Corporation	4,500	7	0.5%			
Amway Corporation	3,800	8	0.5%	4,000	5	0.6%
MillerKnoll (Herman Miller Inc)	3,600	9	0.4%			
Perrigo Company	3,500	10	0.4%			
Steelcase Inc.				3,200	8	0.4%
Spartan Stores, Inc.				4,176	4	0.6%
Axios Incorporated				3,728	7	0.5%
Grand Rapids Public Schools				4,000	6	0.6%
Fifth Third Bank				2,450	9	0.3%
Total Principal Employers	71,500		8.7%	59,326		8.3%
Total Employment Base	825,594			713,765		

Source: The Right Place Inc. of Greater Grand Rapids.

Forest Hills Public Schools

Full-Time-Equivalent District Employees by Type, Last Ten Fiscal Years

<i>Employee Category</i>	Full-Time-Equivalent Employees as of June 30,									
	2015	2016	2017	2018	2019	2020	2021	2022	2023	2024
Administrators	35	37	37	38	39	43	43	46	45	43
Teachers	570	551	538	529	528	536	559	552	569	571
Clerical/secretarial	78	78	78	76	68	71	61	80	70	76
Instructional aides	140	140	96	82	81	72	100	95	118	99
Maintenance/custodial/food service	120	113	106	106	106	114	130	98	130	115
Transportation	53	53	44	41	39	40	42	34	42	44
Daycare	19	16	19	12	11	12	11	13	13	12
Non-classified/other	83	83	78	82	82	82	105	57	99	83
Total	1,098	1,071	996	966	954	970	1,051	975	1,086	1,043

Source: Michigan Department of Education Registry of Educational Personnel and District Records

Forest Hills Public Schools

Operating Statistics, Last Ten Fiscal Years

<i>Fiscal Year</i>	Enrollment ^a	Percent Change	Operating Expenditures ^b	Percent Change	Cost Per Pupil	Percent Change	Percent of Students Receiving Free or Reduced-Price Meals ^c
2014 - 2015	10,071	-0.28%	105,225,212	2.35%	10,448	2.63%	11.90%
2015 - 2016	9,978	-0.92%	104,087,417	-1.08%	10,446	-0.02%	10.10%
2016 - 2017	9,890	-0.88%	105,075,572	0.95%	10,624	1.71%	10.10%
2017 - 2018	9,834	-0.57%	105,805,643	0.69%	10,759	1.27%	10.10%
2018 - 2019	9,764	-0.71%	108,663,629	2.70%	11,129	3.44%	10.10%
2019 - 2020	9,709	-0.56%	109,033,985	0.34%	11,230	0.91%	11.60%
2020 - 2021	9,625	-0.87%	115,517,471	5.95%	12,002	6.87%	11.60%
2021 - 2022	9,319	-3.18%	123,843,025	7.21%	13,289	10.73%	13.59%
2022 - 2023	9,200	-1.28%	136,057,345	9.86%	14,789	11.28%	13.59%
2023 - 2024	9,077	-1.34%	132,551,830	-2.58%	14,603	-1.26%	13.59%

Sources:

^a District enrollment records audited by Intermediate School District.

^b District financial statements as audited.

^c State of Michigan Center for Educational Performance and Information (CEPI).

Forest Hills Public Schools

School Building Information

<i>Site</i>	Grade Configuration	Acreage	Date Originally Constructed	Additions	Square Feet
Ada Elementary	K-4	15.28	1968	1992, 2003, 2004, 2009	65,185
Ada Vista Elementary	K-4	8.79	1971	2003, 2004, 2009	61,454
Collins Elementary	K-4	12.40	1954	1991, 2004, 2009	61,221
Meadow Brook Elementary	K-4	33.26	1992	1996, 2004, 2010	88,930
Pine Ridge Elementary	K-4	27.51	1975	1991, 2002, 2004, 2010	61,750
Thornapple Elementary	K-4	10.04	1959	1996, 2002, 2004, 2008	58,374
Knapp Forest Elementary	K-5	24.71	2003	2004, 2010	96,654
Orchard View Elementary	K-5	10.65	1959	1991, 1996, 2002, 2004, 2008, 2021	79,118
Central Woodlands	5-6	51.67	1997	2004, 2009, 2010	85,678
Goodwillie Environmental	5-6	19.54	2000	2004, 2009	11,786
Northern Trails	5-6	36.58	1997	2004, 2009	85,678
Central Middle	7-8	29.61	1965	1990, 2002, 2004, 2009	137,584
Northern Hills Middle	7-8	35.08	1977	1990, 2002, 2004, 2008	115,025
Eastern High/Middle	6-12	114.72	2004	2005, 2010, 2014-2015, 2021	370,381
Central High	9-12	54.87	1956	1990, 1995, 2003, 2004, 2009	264,833
Northern High	9-12	55.35	1972	1990, 1995, 2003, 2004, 2008, 2009, 2021	255,564
Transition Center - New	Varies	Incl in New Admin Bldg	2024		7,560
Transition Center - Old	Varies		2005		3,500

Forest Hills Public Schools

School Building Information

<i>Site</i>	Grade Configuration	Acreage	Date Originally Constructed	Additions	Square Feet
Administration Building - New	N/A	1.00	2024		20,929
Administration Building - Old	N/A	8.59	1951		23,268
Community and Aquatic Center	N/A	18.00	1990	2009	37,900
Fine Arts Center	N/A	27.16	2004		61,850
Operations/Food Service	N/A	5.782	2000		12,438
Buildings and Grounds	N/A	1.065	1970	2010	12,528
Transportation	N/A	26.21	1999		12,000
A.C.E. Building	N/A	0.88	approx. 1865		950
Alta Dale Property 110-120 Alta Dale SE	N/A	1.70			
Buttrick Property 2280 Buttrick SE	N/A	59.07			
Fulton - Spaulding Property	N/A	7.47			
Honey Creek Property 520 Honey Creek NE	N/A	14.06			
Crew Building/Property	N/A	2.31			

Source: District records.

Forest Hills Public Schools
Schedule of Expenditures of Federal Awards
Year Ended June 30, 2024

Federal Grantor/Pass-through Grantor Program Title	Federal Assistance Listing Number	Pass-through Grantor's Number	Award Amount	Accrued (Unearned) Revenue 7/1/2023	Prior Year Expenditures (Memorandum Only)	Adjustments	Current Year Receipts	Current Year Expenditures	Accrued (Unearned) Revenue 6/30/2024
U.S. Department of Agriculture									
Passed through Michigan Department of Education									
Child Nutrition Cluster									
Non-cash assistance (donated foods)									
National School Lunch Program - Entitlement	10.555		\$ 333,755				\$ 333,755	\$ 333,755	
National School Lunch Program - Bonus	10.555		3,254				3,254	3,254	
Total non-cash assistance			337,009				337,009	337,009	
Cash assistance									
National School Lunch Program	10.555	231960	987,828	\$ 16,598	\$ 819,179		168,649	152,051	
National School Lunch Program	10.555	240910	225,791				225,791	225,791	
National School Lunch Program	10.555	241960	761,743				761,743	761,743	
Total ALN 10.555			1,975,362	16,598	819,179		1,156,183	1,139,585	
School Breakfast Program	10.553	231970	66,184	1,500	37,676		28,508	27,008	
School Breakfast Program	10.553	241970	149,908				149,908	149,908	
Total ALN 10.553			216,092	1,500	37,676		178,416	176,916	
Total cash assistance			2,191,454	18,098	856,855		1,334,599	1,316,501	
Total Child Nutrition Cluster			2,528,463	18,098	856,855		1,671,608	1,653,510	
Total U.S. Department of Agriculture			2,528,463	18,098	856,855		1,671,608	1,653,510	

The accompanying notes are an integral part of this schedule.

Forest Hills Public Schools
Schedule of Expenditures of Federal Awards
Year Ended June 30, 2024

Federal Grantor/Pass-through Grantor Program Title	Federal Assistance Listing Number	Pass-through Grantor's Number	Award Amount	Accrued (Unearned) Revenue 7/1/2023	Prior Year Expenditures (Memorandum Only)	Adjustments	Current Year Receipts	Current Year Expenditures	Accrued (Unearned) Revenue 6/30/2024
U.S. Department of Education									
Passed through Kent Intermediate School District									
Special Education Cluster									
Special Education Grants to States	84.027	240450-2324	\$ 1,581,527				\$ 1,510,653	\$ 1,869,359	\$ 358,706
Special Education Grants to States	84.027	230450-2223	1,747,656	\$ 408,046	\$ 1,747,656		408,046		
COVID-19 Special Education Grants to States ARP	84.027X	221280-2122	410,552	56,418	207,953		56,418		
Total ALN 84.027			<u>3,739,735</u>	<u>464,464</u>	<u>1,955,609</u>		<u>1,975,117</u>	<u>1,869,359</u>	<u>358,706</u>
Special Education Preschool Grants	84.173	240460-2324	51,423				49,110	60,823	11,713
Special Education Preschool Grants	84.173	230460-2223	63,256	15,314	63,256		15,314		
COVID-19 Special Education Preschool Grants ARP	84.173X	221285-2122	31,935	3,827	15,958		3,827		
Total ALN 84.173			<u>146,614</u>	<u>19,141</u>	<u>79,214</u>		<u>68,251</u>	<u>60,823</u>	<u>11,713</u>
Total Special Education Cluster			<u>3,886,349</u>	<u>483,605</u>	<u>2,034,823</u>		<u>2,043,368</u>	<u>1,930,182</u>	<u>370,419</u>
Education for Homeless Children and Youth	84.196		5,671	4,977	5,671		4,977		
Total U.S. Department of Education passed through Kent Intermediate School District			<u>3,892,020</u>	<u>488,582</u>	<u>2,040,494</u>	\$ -	<u>2,048,345</u>	<u>1,930,182</u>	<u>370,419</u>
Passed through Michigan Department of Education									
Title I Grants to Local Educational Agencies	84.010	241530-2324	249,763				234,920	247,335	12,415
Title I Grants to Local Educational Agencies	84.010	231530-2223	255,657	3,009	229,896		3,009		
Total ALN 84.010			<u>505,420</u>	<u>3,009</u>	<u>229,896</u>		<u>237,929</u>	<u>247,335</u>	<u>12,415</u>
Supporting Effective Instruction State Grants	84.367	240520-2324	200,299				98,243	102,281	4,038
Supporting Effective Instruction State Grants	84.367	230520-2223	155,305	(3,136)	81,569	(397)	(3,533)		
Total ALN 84.367			<u>355,604</u>	<u>(3,136)</u>	<u>81,569</u>	<u>(397)</u>	<u>94,710</u>	<u>102,281</u>	<u>4,038</u>
English Language Acquisition State Grants	84.365	240580-2324	89,302				38,746	39,544	798
English Language Acquisition State Grants	84.365	230570-2223	9,386	1,347	4,476		1,347		
English Language Acquisition State Grants	84.365	230580-2223	88,173	1,554	36,296		9,438	7,884	
Total ALN 84.365			<u>186,861</u>	<u>2,901</u>	<u>40,772</u>		<u>49,531</u>	<u>47,428</u>	<u>798</u>
Student Support and Academic Enrichment Program	84.424	230750-2223	18,991	5,273	18,763		5,273		

The accompanying notes are an integral part of this schedule.

Forest Hills Public Schools
Schedule of Expenditures of Federal Awards
Year Ended June 30, 2024

Federal Grantor/Pass-through Grantor Program Title	Federal Assistance Listing Number	Pass-through Grantor's Number	Award Amount	Accrued (Unearned) Revenue 7/1/2023	Prior Year Expenditures (Memorandum Only)	Adjustments	Current Year Receipts	Current Year Expenditures	Accrued (Unearned) Revenue 6/30/2024
U.S. Department of Education (continued)									
Passed through Michigan Department of Education (continued)									
COVID-19 Elementary and Secondary School Emergency Relief Fund (ESSER II Formula Funds)	84.425D	213712-2021	\$ 893,225	\$ 15,314	\$ 15,314		\$ 15,314		
COVID-19 Elementary and Secondary School Emergency Relief Fund (ESSER III Formula Funds)	84.425U	213713-2122	2,008,091	9,279	283,178		1,368,472	\$ 1,432,064	\$ 72,871
COVID-19 Elementary and Secondary School Emergency Relief Fund (ESSER III 11t)	84.425U	213723-2122	8,511,881	2,051,863	3,383,561		5,425,676	4,284,277	910,464
COVID-19 Homeless Students Grant ARP	84.425W	211012-2122	18,704	987				412	1,399
Total Education Stabilization Fund			<u>11,431,901</u>	<u>2,077,443</u>	<u>3,682,053</u>		<u>6,809,462</u>	<u>5,716,753</u>	<u>984,734</u>
Total U.S. Department of Education			<u>16,390,797</u>	<u>2,574,072</u>	<u>6,093,547</u>	<u>\$ (397)</u>	<u>9,245,250</u>	<u>8,043,979</u>	<u>1,372,404</u>
U.S. Department of Health and Human Services									
Passed through Kent Intermediate School District									
Medicaid Cluster									
Medical Assistance Program	93.778		83,672	32,932	32,932		83,672	50,740	
Health Resource Advocates	93.323	242810-HRA2024	53,236				53,236	106,457	53,221
Health Resource Advocates	93.323	232810-HRA2023	116,621	44,001	116,621		44,001		
Total ALN 93.323			<u>169,857</u>	<u>44,001</u>	<u>116,621</u>		<u>97,237</u>	<u>106,457</u>	<u>53,221</u>
Total U.S. Department of Health and Human Services			<u>253,529</u>	<u>76,933</u>	<u>149,553</u>		<u>180,909</u>	<u>157,197</u>	<u>53,221</u>
TOTAL FEDERAL AWARDS			<u>\$ 19,172,789</u>	<u>\$ 2,669,103</u>	<u>\$ 7,099,955</u>	<u>\$ (397)</u>	<u>\$ 11,097,767</u>	<u>\$ 9,854,686</u>	<u>\$ 1,425,625</u>

The accompanying notes are an integral part of this schedule.

Forest Hills Public Schools

Notes to Schedule of Expenditures of Federal Awards For the Year Ended June 30, 2024

NOTE 1 - BASIS OF PRESENTATION

The accompanying schedule of expenditures of federal awards (the "Schedule") includes the federal award activity of Forest Hills Public Schools under programs of the federal government for the year ended June 30, 2024. The information in this Schedule is presented in accordance with the requirements of Title 2 U.S. Code of Federal Regulations Part 200, *Uniform Administrative Requirements, Cost Principles, and Audit Requirements for Federal Awards* (Uniform Guidance). Because the Schedule presents only a selected portion of the operations of Forest Hills Public Schools, it is not intended to and does not present the financial position or changes in net position of Forest Hills Public Schools.

The District qualifies for low-risk auditee status. Management has utilized the NexSys Cash Management System and the Grant Auditor Report in preparing the Schedule of Expenditures of Federal Awards. The District does not pass through federal funds.

NOTE 2 - SUMMARY OF SIGNIFICANT ACCOUNTING POLICIES

Expenditures reported on the Schedule are reported on the modified accrual basis of accounting. Such expenditures are recognized following the cost principles contained in the Uniform Guidance, wherein certain types of expenditures are not allowable or are limited as to reimbursement. Negative amounts (if any) shown on the Schedule represent adjustments or credits made in the normal course of business to amounts reported as expenditures in prior years. Pass-through entity identifying numbers are presented where available. Forest Hills Public Schools has elected not to use the 10-percent de minimis indirect cost rate allowed under the Uniform Guidance.

NOTE 3 - RECONCILIATION WITH AUDITED FINANCIAL STATEMENTS

Federal expenditures are reported as revenue in the following funds in the financial statements June 30, 2024:

General fund	\$ 8,200,779
Other nonmajor governmental funds	<u>1,653,510</u>
Total federal revenue in the fund financial statements	9,854,289
Add: Adjustments	<u>397</u>
Expenditures per schedule of expenditures of federal awards	<u><u>\$ 9,854,686</u></u>

NOTE 4 - ADJUSTMENTS TO THE SCHEDULE OF EXPENDITURES OF FEDERAL AWARDS

Adjustments were made to Titel IIA (ALN 84.367) for \$(397) for prior year accrued revenue that was not received.



2425 E. Grand River Ave.,
Suite 1, Lansing, MI 48912

☎ 517.323.7500

📠 517.323.6346

**INDEPENDENT AUDITOR'S REPORT ON INTERNAL CONTROL OVER FINANCIAL REPORTING AND
ON COMPLIANCE AND OTHER MATTERS BASED ON AN AUDIT OF FINANCIAL STATEMENTS
PERFORMED IN ACCORDANCE WITH *GOVERNMENT AUDITING STANDARDS***

To the Board of Education
Forest Hills Public Schools

We have audited, in accordance with the auditing standards generally accepted in the United States of America and the standards applicable to financial audits contained in *Government Auditing Standards* issued by the Comptroller General of the United States, the financial statements of the governmental activities, each major fund and the aggregate remaining fund information of Forest Hills Public Schools (the District) as of and for the year ended June 30, 2024, and the related notes to the financial statements, which collectively comprise the District's basic financial statements, and have issued our report thereon dated October 9, 2024.

Report on Internal Control Over Financial Reporting

In planning and performing our audit of the financial statements, we considered the District's internal control over financial reporting (internal control) to determine the audit procedures that are appropriate in the circumstances for the purpose of expressing our opinions on the financial statements, but not for the purpose of expressing an opinion on the effectiveness of the District's internal control. Accordingly, we do not express an opinion on the effectiveness of the District's internal control.

A deficiency in internal control exists when the design or operation of a control does not allow management or employees, in the normal course of performing their assigned functions, to prevent, or detect and correct, misstatements on a timely basis. *A material weakness* is a deficiency, or a combination of deficiencies, in internal control such that there is a reasonable possibility that a material misstatement of the entity's financial statements will not be prevented or detected and corrected on a timely basis. *A significant deficiency* is a deficiency, or a combination of deficiencies, in internal control that is less severe than a material weakness, yet important enough to merit attention by those charged with governance.

Our consideration of internal control was for the limited purpose described in the first paragraph of this section and was not designed to identify all deficiencies in internal control that might be material weaknesses or significant deficiencies, and therefore, material weaknesses or significant deficiencies may exist that have not been identified. Given these limitations, during our audit we did not identify any deficiencies in internal control that we consider to be material weaknesses. However, material weaknesses or significant deficiencies may exist that were not identified.

Report on Compliance and Other Matters

As part of obtaining reasonable assurance about whether Forest Hills Public Schools' financial statements are free from material misstatement, we performed tests of its compliance with certain provisions of laws, regulations, contracts and grant agreements, noncompliance with which could have a direct and material effect on the determination of financial statement amounts. However, providing an opinion on compliance with those provisions was not an objective of our audit, and accordingly, we do not express such an opinion. The results of our tests disclosed no instances of noncompliance or other matters that are required to be reported under *Government Auditing Standards*.

Purpose of This Report

The purpose of this report is solely to describe the scope of our testing of internal control and compliance and the result of that testing, and not to provide an opinion on the effectiveness of the District's internal control or on compliance. This report is an integral part of an audit performed in accordance with *Government Auditing Standards* in considering the entity's internal control and compliance. Accordingly, this communication is not suitable for any other purpose.

Manes Costeiran PC

October 9, 2024



2425 E. Grand River Ave.,
Suite 1, Lansing, MI 48912

☎ 517.323.7500

📠 517.323.6346

**INDEPENDENT AUDITOR'S REPORT ON COMPLIANCE FOR EACH MAJOR PROGRAM AND ON
INTERNAL CONTROL OVER COMPLIANCE REQUIRED BY THE UNIFORM GUIDANCE**

To the Board of Education
Forest Hills Public Schools

Report on Compliance for Each Major Federal Program

Opinion on Each Major Federal Program

We have audited Forest Hills Public Schools' compliance with the types of compliance requirements identified as subject to audit in the OMB *Compliance Supplement* that could have a direct and material effect on each of Forest Hills Public Schools' major federal programs for the year ended June 30, 2024. Forest Hills Public Schools' major federal programs are identified in the summary of auditor's results section of the accompanying schedule of findings and questioned costs.

In our opinion, Forest Hills Public Schools complied, in all material respects, with the types of compliance requirements referred to above that could have a direct and material effect on each of its major federal programs for the year ended June 30, 2024.

Basis for Opinion on Each Major Federal Program

We conducted our audit of compliance in accordance with auditing standards generally accepted in the United States of America; the standards applicable to financial audits contained in *Government Auditing Standards*, issued by the Comptroller General of the United States; and the audit requirements of Title 2 U.S. *Code of Federal Regulations* Part 200, *Uniform Administrative Requirements, Cost Principles, and Audit Requirements for Federal Awards* (Uniform Guidance). Our responsibilities under those standards and the Uniform Guidance are further described in the Auditor's Responsibilities for the Audit of Compliance section of our report.

We are required to be independent of Forest Hills Public Schools and to meet our other ethical responsibilities, in accordance with relevant ethical requirements relating to our audit. We believe that the audit evidence we have obtained is sufficient and appropriate to provide a basis for our opinion on compliance for each major federal program. Our audit does not provide a legal determination of Forest Hills Public Schools' compliance with the compliance requirements referred to above.

Responsibilities of Management for Compliance

Management is responsible for compliance with the requirements referred to above and for the design, implementation, and maintenance of effective internal control over compliance with the requirements of laws, statutes, regulations, rules, and provisions of contracts or grant agreements applicable to Forest Hills Public Schools' federal programs.

Auditor's Responsibilities for the Audit of Compliance

Our objectives are to obtain reasonable assurance about whether material noncompliance with the compliance requirements referred to above occurred, whether due to fraud or error, and express an opinion on Forest Hills Public Schools' compliance based on our audit. Reasonable assurance is a high level of assurance but is not absolute assurance and therefore is not a guarantee that an audit conducted in accordance with generally accepted auditing standards, *Government Auditing Standards*, and the Uniform Guidance will always detect material noncompliance when it exists. The risk of not detecting material noncompliance resulting from fraud is higher than for that resulting from error, as fraud may involve collusion, forgery, intentional omissions, misrepresentations, or the override of internal control. Noncompliance with the compliance requirements referred to above is considered material if there is a substantial likelihood that, individually or in the aggregate, it would influence the judgment made by a reasonable user of the report on compliance about Forest Hills Public Schools' compliance with the requirements of each major federal program as a whole.

In performing an audit in accordance with generally accepted auditing standards, *Government Auditing Standards*, and the Uniform Guidance, we:

- Exercise professional judgment and maintain professional skepticism throughout the audit.
- Identify and assess the risks of material noncompliance, whether due to fraud or error, and design and perform audit procedures responsive to those risks. Such procedures include examining, on a test basis, evidence regarding Forest Hills Public Schools' compliance with the compliance requirements referred to above and performing such other procedures as we considered necessary in the circumstances.
- Obtain an understanding of Forest Hills Public Schools' internal control over compliance relevant to the audit in order to design audit procedures that are appropriate in the circumstances and to test and report on internal control over compliance in accordance with the Uniform Guidance, but not for the purpose of expressing an opinion on the effectiveness of Forest Hills Public Schools' internal control over compliance. Accordingly, no such opinion is expressed.

We are required to communicate with those charged with governance regarding, among other matters, the planned scope and timing of the audit and any significant deficiencies and material weaknesses in internal control over compliance that we identified during the audit.

Report on Internal Control Over Compliance

A deficiency in internal control over compliance exists when the design or operation of a control over compliance does not allow management or employees, in the normal course of performing their assigned functions, to prevent, or detect and correct, noncompliance with a type of compliance requirement of a federal program on a timely basis. *A material weakness in internal control over compliance* is a deficiency, or a combination of deficiencies, in internal control over compliance, such that there is a reasonable possibility that material noncompliance with a type of compliance requirement of a federal program will not be prevented, or detected and corrected, on a timely basis. *A significant deficiency in internal control over compliance* is a deficiency, or a combination of deficiencies, in internal control over compliance with a type of compliance requirement of a federal program that is less severe than a material weakness in internal control over compliance, yet important enough to merit attention by those charged with governance.

Our consideration of internal control over compliance was for the limited purpose described in the Auditor's Responsibilities for the Audit of Compliance section above and was not designed to identify all deficiencies in internal control over compliance that might be material weaknesses or significant deficiencies in internal control over compliance. Given these limitations, during our audit we did not identify any deficiencies in internal control over compliance that we consider to be material weaknesses, as defined above. However, material weaknesses or significant deficiencies in internal control over compliance may exist that were not identified.

Our audit was not designed for the purpose of expressing an opinion on the effectiveness of internal control over compliance. Accordingly, no such opinion is expressed.

The purpose of this report on internal control over compliance is solely to describe the scope of our testing of internal control over compliance and the results of that testing based on the requirements of the Uniform Guidance. Accordingly, this report is not suitable for any other purpose.

Maney Costeiran PC

October 9, 2024

Forest Hills Public Schools
Schedule of Findings and Questioned Costs
For the Year Ended June 30, 2024

Section I - Summary of Auditor's Results

Financial Statements

Type of auditor's report issued based on financial statements prepared in accordance with generally accepted accounting principles:

Unmodified

- Material weakness(es) identified? _____ Yes X No
- Significant deficiency(ies) identified? _____ Yes X None reported

Noncompliance material to financial statements noted? _____ Yes X No

Federal Awards

Internal control over major programs:

- Material weakness(es) identified? _____ Yes X No
- Significant deficiency(ies) identified? _____ Yes X None reported

Type of auditor's report issued on compliance for major programs:

Unmodified

Any audit findings that are required to be reported in accordance with Title 2 CFR Section 200.516(a)? _____ Yes X No

Identification of major programs:

Assistance Listing Number(s)	Name of Federal Program or Cluster
84.425	Education Stabilization Fund

Dollar threshold used to distinguish between Type A and Type B programs:

\$750,000

Auditee qualified as low-risk auditee? X Yes _____ No

Section II - Financial Statement Findings

None

Section III - Federal Award Findings and Questioned Costs

None

Forest Hills Public Schools
Schedule of Prior Year Audit Findings
For the Year Ended June 30, 2024

There were no audit findings required to be reported on this schedule for the year ended June 30, 2023.